

Electrical data:

Operating voltage U_b max. DC	24.0 V
Operating voltage U_b max. AC	24.0 V

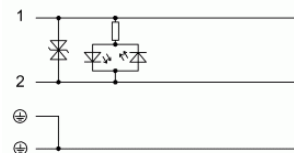
Mechanical data:

Cable jacket material	PUR
Cable diameter D	4,6 +/- 0,1 mm
Ambient temp. min. (fixed)	-40 °C
Ambient temp. max. (fixed)	90 °C
Ambient temp. min. (moving)	-25 °C
Ambient temp. max. (moving)	80 °C
Acceleration max. (drag chain)	5 m/s ²
Number of pins	4
Bending radius fixed cable	min. 5xD
Bending radius tensioned cable	min. 10xD
Contact material	CuSn
System	molded
Number of conductors	3
Cable length	2,00 m
Head 1 - Head 2 Size	Type A1
Conductor cross-section	0.50 mm ²
Traverse speed max.(drag chain)	at 5 m horiz. travel 200 m/min
Permiss.vert. traverse dist	at 5 m/sec ² 2 m
Bending cycles (in Mio.)	> 2 Mio.
Ambient temp. min.(drag chain)	-25 °C
Ambient temp. max.(drag chain)	60 °C
Permiss.horizon. traverse dist	at 5 m/sec ² 5 m

General data:

Cable jacket color	black
Function indicator	LED yellow / -
Enclosure Type per IEC 60529	IP67

Wiring:



Pinout:

