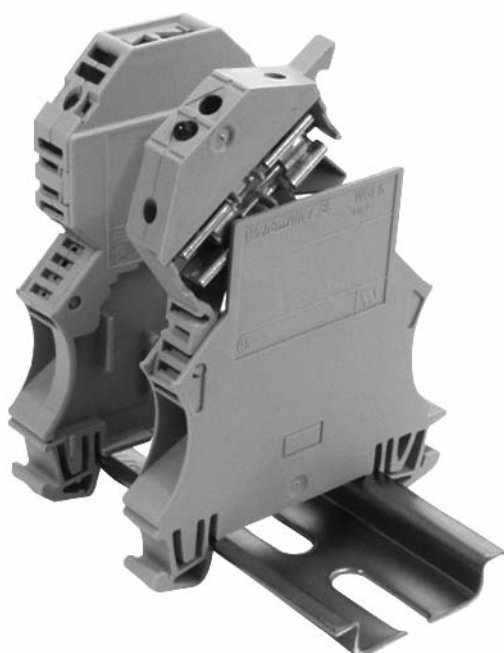


WSI Fuse Terminals with Low Leakage Current Status Indication



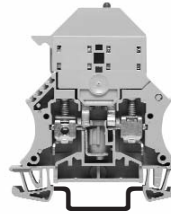
Weidmuller offers versions of the WSI fuse terminals with low leakage current blown fuse indication (BFI).

The BFI circuit is located in parallel with the fuse so that a current goes through the indicator only when the fuse blows. As this current is an unwanted off-state leakage current it is important that the level be kept to an absolute minimum. Weidmuller's BFI circuits draw no more than 500 μ A - not enough to pose a safety hazard or falsely energize PLC or DCS digital inputs.

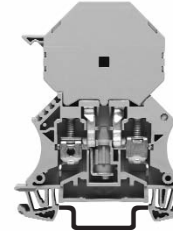
Features:

- WSI 6 LD for 5x20mm fuses, just 8mm wide
- WSI 6/2 LD for 1¼" x ¼" fuses, 12mm wide
- Moulded from UL 94-V0 Wemid material
- 35mm DIN rail mounting
- Non-polarized, bi-polar LED circuit with less than 500 μ A leakage at nominal voltage as per CSA Standard C22.2 No. 39 Fuse Holder Assemblies and UL Standard 512 Fuseholders.

WSI 6/LD, LLC
with LED, 5 x 20mm, 5 x 25mm fuse
VAC/DC



WSI 6/2/LD, LLC
with LED 1 1/4" x 1/4" fuse
VAC/DC



Note:
Voltage is disconnected by opening the disconnect lever. If the fuse of the LED variants is defective, the downstream circuit is still under current, since low-level current is still flowing via the LED.

Technical data

| Dimensions/approvals | |
|---|------------------|
| Width/length/height (mm) | with TS 35 x 7.5 |
| Insulation stripping length/clamping screw/screwdriver blade | |
| Rated data of terminal base (for Europe) | |
| Rated voltage/current/cross-section | |
| Rated impulse voltage acc. to VDE 0110/1.89 /pollution severity | |
| Further technical data | |
| Tightening torque range | Nm |
| Clampable conductors (H05V/H07V) | |
| Solid/Stranded | mm ² |
| Flexible/Stranded H07V-R wire with ferrules | mm ² |
| Flexible H07V-K | mm ² |
| Cont. current of cross-connect. 2-pole/multi-pole | A |
| UL/CSA rated data | |
| Voltage/current/conductor size | UL |
| Voltage/current/conductor size | CSA |

| UL | |
|------------------------------|--|
| 8/60/72 | |
| 12mm/M 3.5/4.0 x 0.8 | |
| 500 V/6.3 A/6mm ² | |
| 6 kV/3 | |
| 0.8...1.6 | |
| 0.5...10 | |
| 1.5...10 | |
| 0.5...10 | |
| 26 | |
| 600 V/10 A/22...8 AWG | |
| 300 V/10 A/22...8 AWG | |

| UL | |
|------------------------------|--|
| 12/60/79.5 | |
| 12mm/M 3.5/4.0 x 0.8 | |
| 500 V/6.3 A/6mm ² | |
| 6 kV/3 | |
| 0.8...1.6 | |
| 0.5...10 | |
| 1.5...10 | |
| 0.5...10 | |
| 26 | |
| 600 V/10 A/22...8 AWG | |
| 600 V/16 A/22...8 AWG | |

Notes:

Above ratings are limited by the actual fuse ratings. Check in-line resistance of the fuse. Maximum power dissipation is 1.6w. Special considerations are required for medium or slow blow fuses.

Above ratings are limited by the actual fuse ratings. Check in-line resistance of the fuse. Maximum power dissipation is 1.6w. Special considerations are required for medium or slow blow fuses.

Ordering data

| Type |
|----------------------------|
| 10-36VAC/DC, ≤ 0.5mA typ. |
| 30-70VAC/DC, ≤ 0.5mA typ. |
| 60-150VAC/DC, ≤ 0.5mA typ. |
| 250VAC ≤ 0.5mA typ. |

| Partition/End plate |
|---------------------|
| WAP Thickness 1.5mm |
| WTW Thickness 1.5mm |

| Cross-connection/Test plug/Notching tool |
|--|
| QL 2-10 |
| BS-M 3x5 |
| PS 2.3 |
| WAW 2 |

| G25 with indicator / imperial (inch) fuse |
|---|
| 0.50 A medium slow / 2 A |
| 1.00 A medium slow / 3 A |
| 2.00 A fast / 5 A |
| 4.00 A fast / 5 A |

| Marking Systems |
|------------------|
| DEK 5/8 WS12/6.5 |

| Miscellaneous |
|--|
| Group marking carrier for ganging 2 or more poles together |

| Description | Qty. | Part No. |
|---------------------|------|------------|
| WSI 6/LD 10-36 LLC | 50 | 1119840000 |
| WSI 6/LD 30-70 LLC | 50 | 1119830000 |
| WSI 6/LD 60-150 LLC | 50 | 1119850000 |
| WSI 6/LD 250VAC LLC | 50 | 1119870000 |
| Description | Qty. | Part No. |
| WAP 2.5-10 | 50 | 1050000000 |
| WTW 2.5-10 | 20 | 1050100000 |

| Description | Qty. | Part No. |
|-------------|------|------------|
| QL 2 | 50 | 0194300000 |
| QL 3 | 50 | 0194400000 |
| QL 4 | 50 | 0194500000 |
| QL 10 | 20 | 0338300000 |
| BS-M 3x5 | 100 | 1052100000 |
| PS 2.3 | 20 | 0180400000 |
| WAW 2 | 1 | 9004510000 |

| Description | Qty. | Part No. |
|-----------------|------|------------|
| G 25/0.50A/M WS | 10 | 0510300000 |
| G 25/1.00A/M RT | 10 | 0265800000 |
| G 25/2.00A/F BL | 10 | 0192700000 |
| G 25/4.00A/F BR | 10 | 0192800000 |

| Description | Qty. | Part No. |
|-------------|------|------------|
| SchS2 | 1m | 0337400000 |

| Description | Qty. | Part No. |
|-----------------------|------|------------|
| WSI 6/2/LD 10-36 LLC | 25 | 1119800000 |
| WSI 6/2/LD 30-70 LLC | 25 | 1119810000 |
| WSI 6/2/LD 60-150 LLC | 25 | 1119820000 |
| WSI 6/2/LD 250VAC LLC | 25 | 1119790000 |
| Description | Qty. | Part No. |
| WAP 2.5-10 | 50 | 1050000000 |
| WTW 2.5-10 | 20 | 1050100000 |

| Description | Qty. | Part No. |
|-------------|------|------------|
| QL 2 | 50 | 0470700000 |
| QL 3 | 50 | 0470800000 |
| QL 4 | 50 | 0470900000 |
| QL 10 | 20 | 0471000000 |
| BS-M 3x5 | 100 | 1052100000 |
| PS 2.3 | 20 | 0180400000 |
| WAW 2 | 1 | 9004510000 |

| Description | Qty. | Part No. |
|-------------|------|------------|
| GZ 2.0A | 10 | 0294500000 |
| GZ 3.0A | 10 | 0295700000 |
| GZ 5.0A | 10 | 0294600000 |
| GZ 10.0A | 10 | 0293900000 |

| Description | Qty. | Part No. |
|------------------|-------------------------|------------|
| DEK 5/8 WS12/6.5 | 1856740000 / 1609920000 | |
| Description | Qty. | Part No. |
| SchS2 | 1m | 0337400000 |