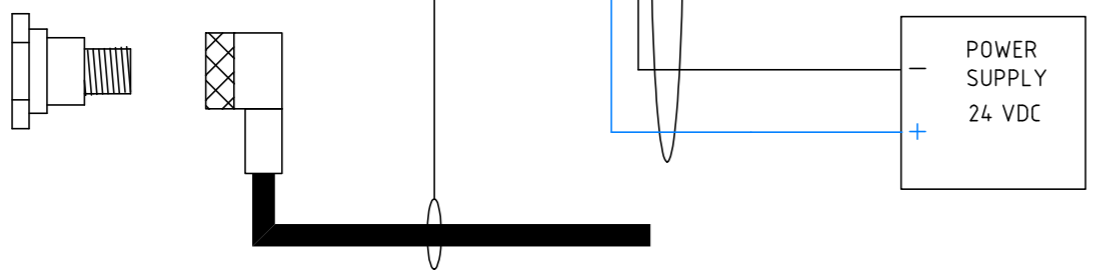
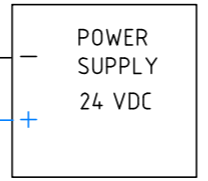
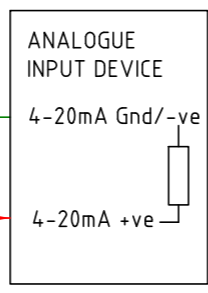
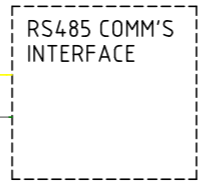


M12 CONNECTOR ASSIGNMENT

Pin	FUNCTION	CABLE COLOUR
1	#NOT USED	BLACK
2	#NOT USED	BROWN
3	4-20mA OUTPUT GROUND	GREEN
4	#SERIAL RS485(B)	YELLOW
5	#SERIAL RS485(A)	GREY
6	POWER GROUND	WHITE
7	POWER +24VDC	BLUE
8	##4-20mA OUTPUT +VE	RED



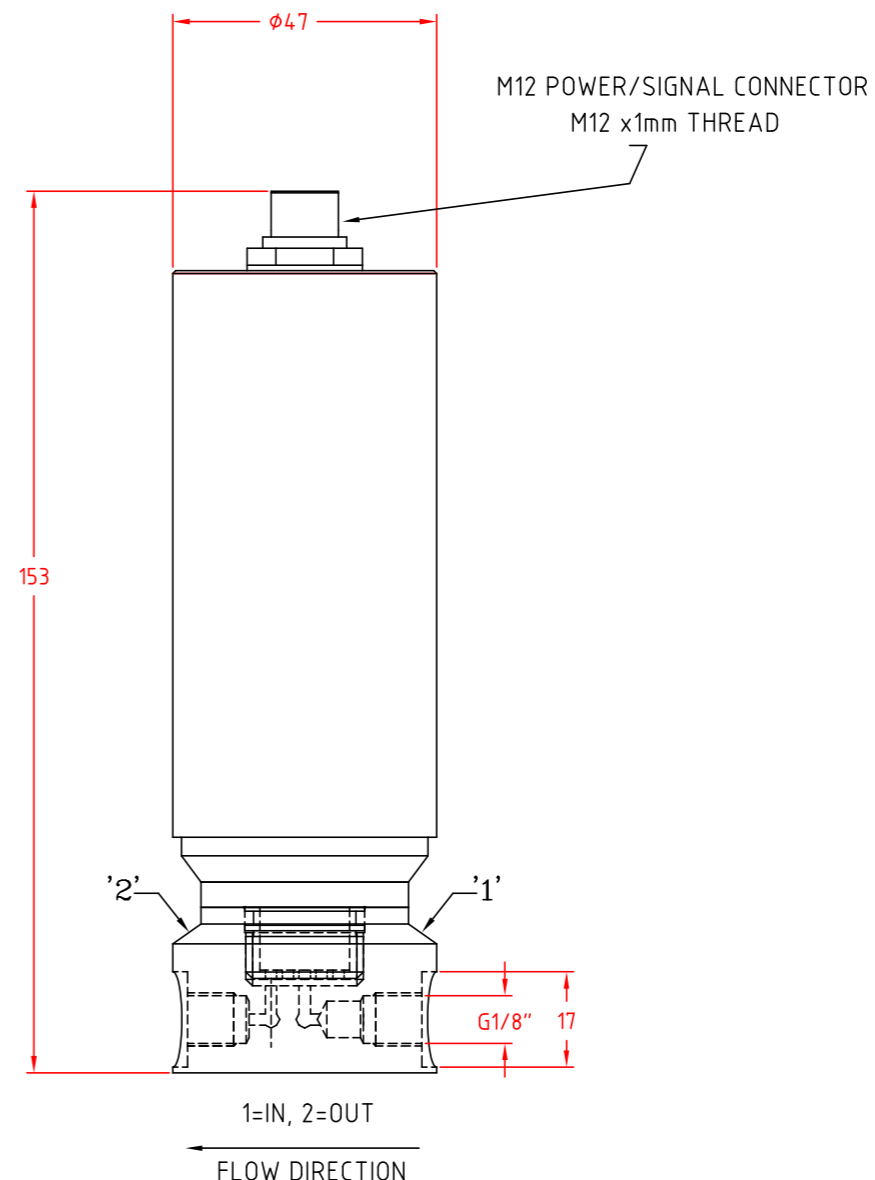
USER INTERFACE EQUIPMENT



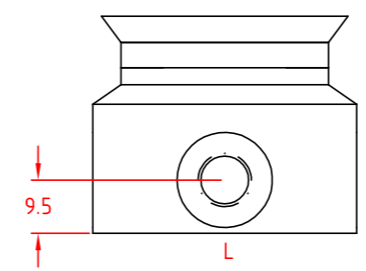
1MTR CABLE WITH M12 CONNECTOR SUPPLIED AS STANDARD.
 #USER TO SUITABLY INSULATE ANY UNUSED WIRES.
 RS485 IS AVAILABLE IF REQUIRED BY USER.
 ## THE 4-20mA IS A SOURCE OUTPUT.

APPLICATION NOTES:

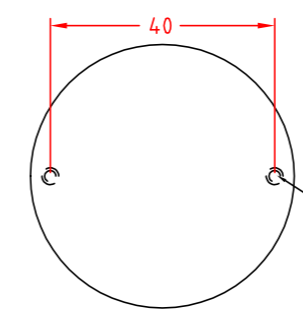
THE ZIRCONIA SENZTX SHOULD BE INSTALLED VERTICALLY IF POSSIBLE (CONNECTOR UPPERMOST) OR UP TO 90 DEGREES FROM THE VERTICAL.
 SAMPLE GAS FLOW RATE SHOULD BE REGULATED TO APPROX. 250mlPM.
 (NOTE: WHEN SUPPLIED WITH INTEGRAL FLOW CONTROL ORIFICE, THE SAMPLE GAS PRESSURE SHOULD BE APPROX. 2BARG TO PRODUCE THE REQUIRED FLOW OF APPROX. 250mlPM.)
 SAMPLE GAS PRESSURE PRESENTED TO THE SENZTX SHOULD BE WITHIN +/- 10% AMBIENT. (TYPICALLY FOR AMBIENT PRESSURE OF 1013mB ABSOLUTE)
 CAUTION! THE SAMPLE GAS MUST NOT CONTAIN H2S OR HCL. SUCH GASES MAY CAUSE IRREPARABLE DAMAGE TO THE SENSING ELEMENT.
 WETTING OF THE SENSOR ELEMENT BY CONDENSATES IN THE SAMPLE GAS STREAM SHOULD BE AVOIDED.
 IF WETTING OF THE SENSOR WHILST IN UN-POWERED STATE IS SUSPECTED, DO NOT TURN POWER ON UNTIL A DRY GAS (e.g. N2) HAS BEEN FLOWED THROUGH THE SENSOR TO DRY OUT AND REMOVE ANY MOISTURE OR LIQUID.
 TURNING ON THE SENSOR WITH MOISTURE PRESENT ON THE SENSOR ELEMENT WILL IRREPARABLY DAMAGE THE SENSOR ELEMENT.



ZIRCONIA SENSOR



SUITABLE G1/8" MALE PIPE CONNECTION BY CUSTOMER



BASE MOUNTING ARRANGEMENT
 2 x M3
 Equi-Spaced, PCD
 40 x 10mm Deep



TITLE: SENZTX ZR M12 WITH FLOW-THROUGH PROCESS CONNECTION DIMENSIONS & CONNECTIONS WITH 4-20mA ANALOGUE OUTPUT

S.O. NO.	N/A	DRAWING NUMBER	DRN.	CHD.	APP.	REV
Q.No.	N/A	SD002	MW	DB	DB	0
SCALE	N.T.S.					
DATE	16-10-2018	PAGE 1	OF			1

REV.	DESCRIPTION	DRN.	CHD.	APP