

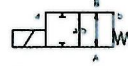


# coaxial valve

## type FK 65



**2/2 way valve** direct acting  
**pressure range** PN 0-16 bar  
**orifice** DN 65 mm  
**connection** flange  
**function** valve  
 normally closed  
 symbol NC  
 valve  
 normally open  
 symbol NO



Above stated body materials refer to the valve port connections that get in contact with the media only!

**design** pressure balanced, with spring return  
**body materials**

- ① aluminium
- ② steel, galvanized
- ③ steel, nickel plated
- ④ stainless steel

**valve seat** synthetic resin on metal  
**seal materials** NBR, PTFE, FPM, EPDM

**details needed**

- orifice
- port
- function NC/NO
- operating pressure
- flow rate
- media
- media temperature
- ambient temperature
- nominal voltage

	general specifications	options
<b>ports</b>	FK flanges PN 16	steel, galvanized
<b>function</b>	NC	
<b>pressure range</b>	bar 0-16	steel, galvanized
<b>Kv value</b>	m <sup>3</sup> /h 45.0	
<b>vacuum</b>		
<b>leak rate</b>		
<b>pressure-vacuum</b>	P <sub>1</sub> ↔ P <sub>2</sub>	
<b>back pressure</b>	P <sub>2</sub> > P <sub>1</sub>	
<b>media</b>	gaseous - liquid - highly viscous - gelatinous - contaminated	
<b>abrasive media</b>		
<b>damping</b>	opening closing	
<b>flow direction</b>	A ↔ B as marked	
<b>switching cycles</b>	1/min 20	
<b>switching time</b>	ms opening 600 closing 800	
<b>media temperature</b>	°C DC: -20 to +80 AC: -20 to +80	
<b>ambient temperature</b>	°C DC: -20 to +80 AC: -20 to +80	
<b>limit switches</b>		
<b>manual override</b>		
<b>approvals</b>		
<b>mounting</b>		
<b>weight</b>	kg FK 35.0	
<b>additional equipment</b>		

**electrical specifications**

<b>nominal voltage</b>	U <sub>n</sub> DC 24 V	
	U <sub>n</sub> AC 230 V 40-60 Hz	
<b>actuation</b>	DC direct-current magnet	
	AC direct-current magnet with integrated rectifier	
<b>insulating rating</b>	H 180°C	
<b>protection</b>	IP65	
<b>energized duty rating</b>	ED 100%	
<b>connection</b>	plug acc. DIN EN 175301-803 form A, 4 positions x90° / wire diameter 6-8 mm	
<b>optional additional equipment</b>	illuminated plug with varistor	
<b>current consumption</b>	N-coil DC 24 V 4.40 A	
	H-coil AC 230 V 40-60 Hz 0.55 A	
<b>explosion proof</b>		
<b>limit switches</b>		

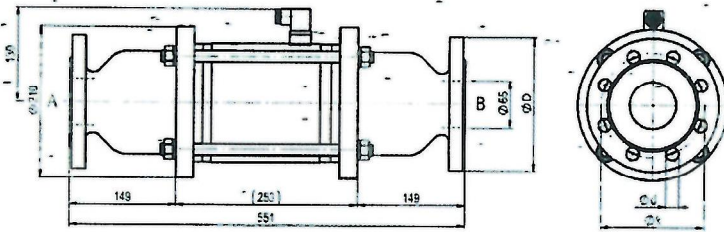
The valves' technical design is based on media and application requirements. This can lead to deviations from the general specifications shown on the data sheet with regards to the design, sealing materials and characteristics.

If order or application specifications are incomplete or imprecise there exists a risk of an incorrect technical design of the valve for the required application. As a consequence, the physical and / or chemical properties of the materials or seals used, may not be suitable for the intended application.

■ specifications not highlighted are standard

# type FK 65

function:- NC  
closed when not energized



flanges PN	DIN	ØD	Øk	Ød
16	EN 1092-1	185	145	18

# type FK 65

function: NO  
open when not energized

