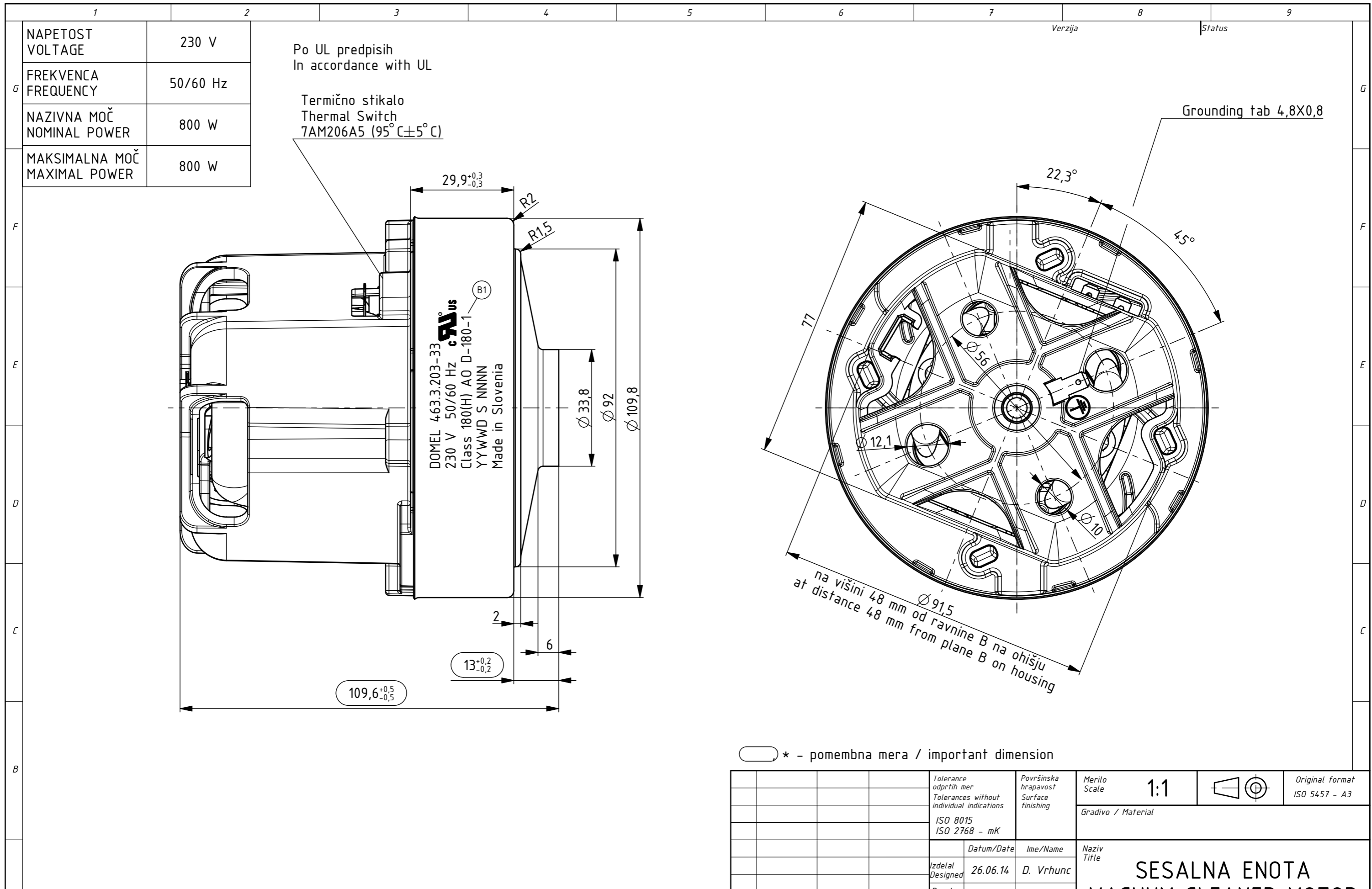


Izdelano s CAD/ProEngineer - ročno spreminjanje ni dovoljeno! Vsak prenos tretjim osebam ali uporaba v nedogovorjene namene ni dovoljena po zakonu o avtorskih pravicah. Made with CAD/ProEngineer - changing is not allowed! Any unauthorized copying of this drawing or unauthorized distribution of the information contained herein is prohibited.



○ * - pomembna mera / important dimension

| OSNOVNE ZNAČILNOSTI | | TYPICAL CHARACTERISTICS | |
|---------------------|----------------------|-------------------------|--------------|
| IZVEDBA | ENOSTOPENJSKA | FAN SYSTEM | SINGLE STAGE |
| ULEŽAJENJE | DVA KROGLIČNA LEŽAJA | BEARINGS | DUAL BALL |
| VRSTA PRETOKA | SKOZI MOTOR | DISCHARGE | THRU FLOW |
| SMER VRTENJA | DESNA | DIRECTION OF ROTATION | CW |

| | | | | | | |
|-------------------------------------------------------------------|--|------------------------------------------|--|---------------------------------------|-----|-------------------------------|
| Tolerance odprtih mer / Tolerances without individual indications | | Površinska hrapavost / Surface finishing | | Merilo / Scale | 1:1 | Original format ISO 5457 - A3 |
| ISO 8015 ISO 2768 - mK | | ISO 2768 - mK | | Gradivo / Material | | |
| Datum/Date | | Ime/Name | | Naziv / Title | | |
| Izdelal / Designed | | 26.06.14 D. Vrhunc | | SESALNA ENOTA VACUUM CLEANER MOTOR | | |
| Pregl. / Verified | | 02.02.16 J. Rihtaršič | | | | |
| Ozn. / Mark | | Št. obvestila / Nr. of notice | | Datum / Date | | Ime / Name |
| B1 12260 02.02.16 D. Vrhunc | | A0 11372 26.06.14 D. Vrhunc | | Koda / Code | | List Sheet 3+ |
| DOMEL® | | Otoki 21, 4228 Železniki, Slovenija | | 463.3.203-33 | | Stran / Page 1 |
| | | | | 4633203033_SESALNA_ENOTA | | |