

# AMETEK

**LAMB®  
VACUUM  
MOTORS,  
BLOWERS**  
**MODEL 116111-00**

**technical  
bulletin**

VT572-6111-00

Issued: 10/6/80

Supersedes: New

## DESCRIPTION

**TYPE:** Two Stage, Single Speed, Thru-Flow, 5.7" Diameter, 220 Volts, Double Ball Bearings.

**DESIGN APPLICATION:** Canister-type vacuum cleaners. Equipment not requiring separation of working air from motor ventilating air. Designed to handle clean, dry, filtered air only. For additional application information write for Bulletin 2-VT570-001.

**SPECIAL FEATURES:**

- Component recognized by Underwriters Laboratories, Inc. (U.L.)
- Provision for grounding
- Open frame construction

All 5.7" diameter thru-flow motors feature face mounting interchangeability. The Lamb vacuum motor line offers a wide range of performance levels to meet design needs.



## TYPICAL MOTOR PERFORMANCE\*

(At 220 volts, 60 Hz, test data is corrected to standard conditions of 29.92 inches Hg, 68 °F.)

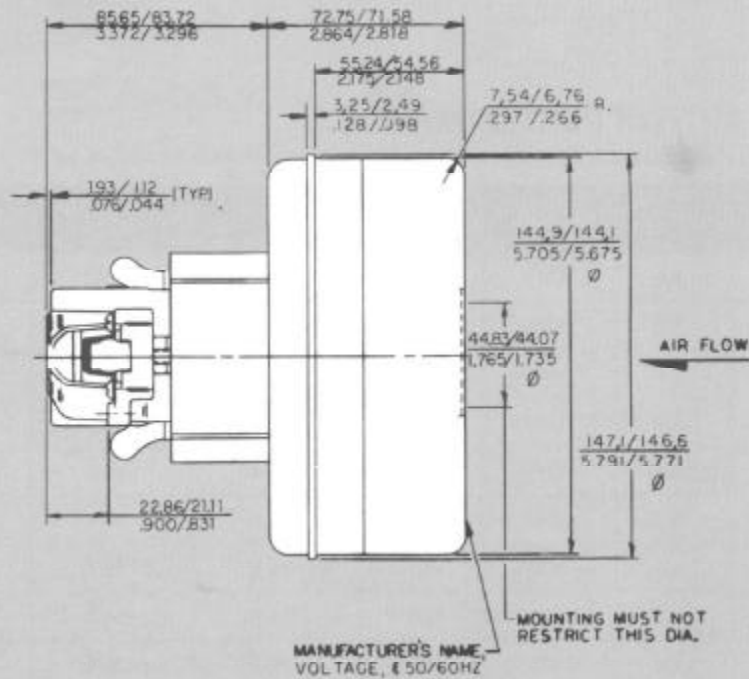
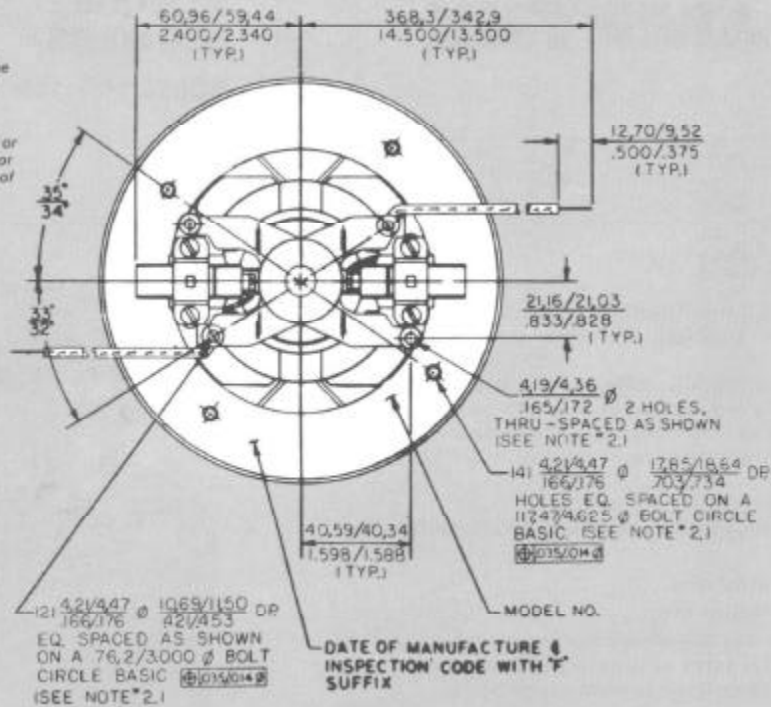
ORIFICE DIAMETER	AMPS	WATTS	RPM	VACUUM (INCHES H <sub>2</sub> O)	AIR FLOW (CFM)	AIR WATTS	OVERALL EFFICIENCY %
2"	5.8	1211	16775	4.5	113.0	59	4.9
1¾"	5.7	1209	16800	7.3	110.0	95	7.8
1½"	5.7	1201	16900	12.2	105.0	150	12.5
1¼"	5.6	1176	17125	20.3	94.0	225	19.1
1⅜"	5.4	1141	17375	25.7	85.7	260	22.7
1"	5.3	1100	17750	32.0	75.5	284	25.8
⅞"	5.0	1057	18200	38.9	63.7	291	27.6
¾"	4.8	1007	18850	46.6	51.2	281	27.9
⅝"	4.4	935	19750	56.0	39.0	257	27.5
½"	4.1	873	20675	65.5	27.0	208	23.8
⅜"	3.7	801	21925	75.0	16.3	144	17.9
¼"	3.4	724	23200	83.5	7.6	75	10.3
SEALED	3.2	687	23850	93.7			

\*The performance data specified represents a typical or average motor. If data is required to establish acceptance specifications, contact the factory.

# DIMENSIONS MODEL 116111-00

**NOTES:**

1. Leads—#18 ga. stranded, leads can be any color except green or green with yellow stripe.
2. Grounding or Earthing Provisions: Use holes as indicated for grounding or earthing. Refer to appropriate listing or regulatory agency for proper method of grounding or earthing.



**WARNING**—AMETEK, Inc. Lamb Electric thru-flow vacuum motors must never be used in applications in which wet or moist conditions are involved, where dry chemicals or other volatile materials are present or where airflow may be restricted or blocked. Such motors are designed to permit the vacuumed air to pass over the electrical winding to cool it. Thus any foam, liquid (including water), dry chemical or other foreign substance will come in contact with electrical conductors which could cause flashing (depending on volatility) or electrical shock. Failure to observe these precautions could result in property damage and severe personal injury, including death in extreme cases. All applications incorporating Lamb motors should be submitted to Underwriters Laboratories, Inc. or other appropriate organizations or agencies for testing specifically related to the safety of your equipment.

# AMETEK

LAMB ELECTRIC DIVISION • 627 LAKE STREET, KENT, OHIO 44240  
TELEPHONE: (216) 673-3451 TELEX: 986497 CABLE: LAMETEK