

**Technical Data**

|   |                                  |
|---|----------------------------------|
| <b>Turbine Frame Size</b>               | GE Frame 9E                      |
| <b>Ordering Drawing / Specification</b> | 91-446626 / 91-446627            |
| <b>Number of Elements</b>               | 14                               |
| <b>Total Flow Rate</b>                  | 867 l/min. (229 GPM) at 1650 rpm |
| <b>Operating Pressure</b>               | Max. 84 bar (1200 psig)          |
| <b>Differential Pressure</b>            | Max. 7 bar (100 psig)            |
| <b>Fluid Temperature</b>                | Max. 60°C (140°F)                |
| <b>Fuels</b>                            | Distillate                       |

**Materials**

|                           |   |
|---------------------------|---|
| <b>Casing and Housing</b> | Surface Treated Nodular Cast Iron                   |
| <b>Shafts and Gears</b>   | Tungsten Carbide Coated<br>Hardened Stainless Steel |
| <b>Bearings</b>           | Hardened Stainless Steel                            |
| <b>Sealing</b>            | Viton   |

**Weight and Shipping Dimensions**

|                     |                        |
|---------------------|------------------------|
| <b>Gross Weight</b> | 240 kg                 |
| <b>Net Weight</b>   | 200 kg                 |
| <b>Dimensions</b>   | 140 cm x 45 cm x 80 cm |

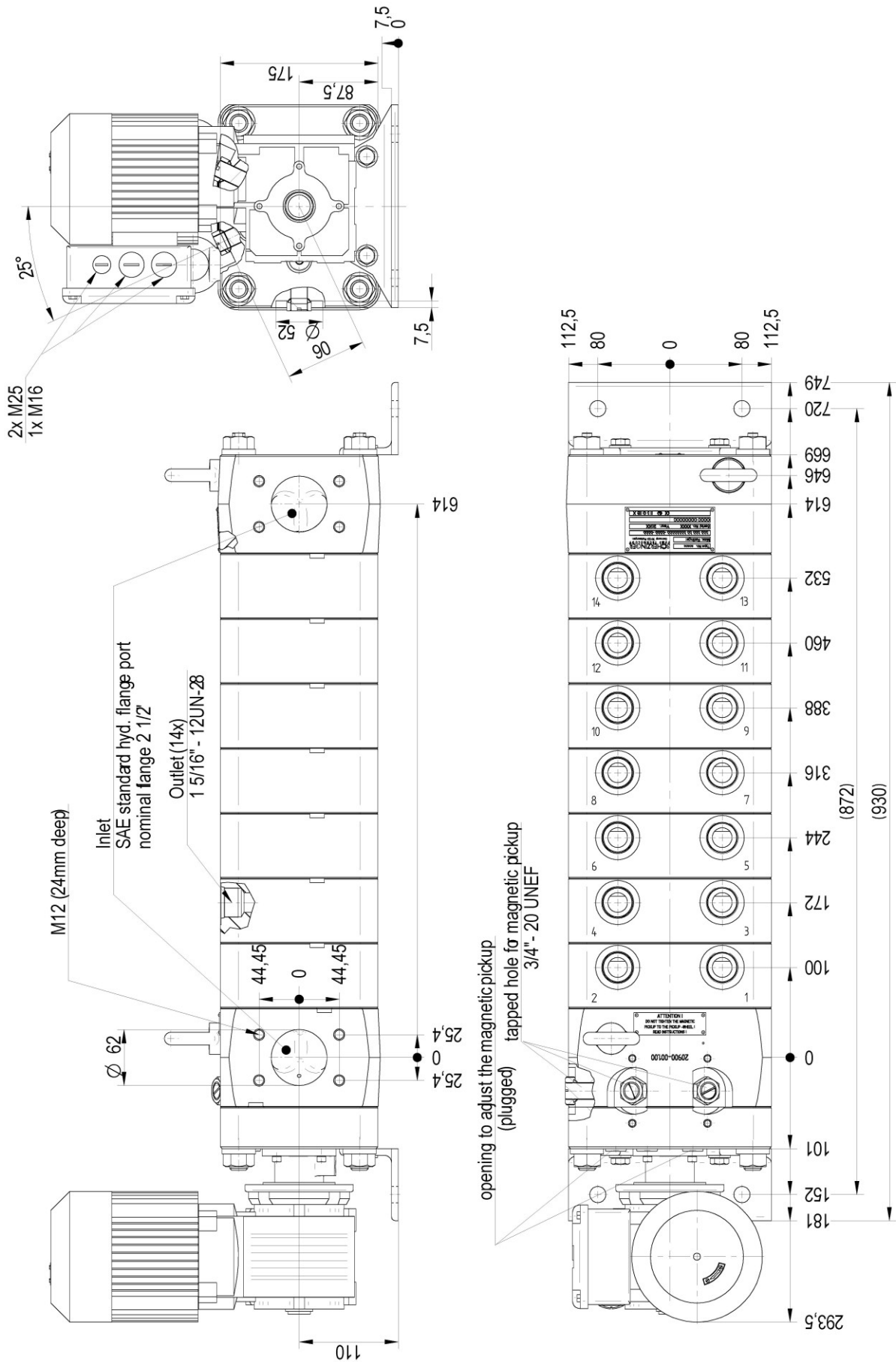
**Starter Motors**

|                          |                     |
|--------------------------|---------------------|
| <b>AC motors – 50 Hz</b> | 415 V; 400 V; 380 V |
|--------------------------|---------------------|

**94/9 EG ATEX**

This Flow Divider is in accordance with Appendix II of Directive 94/9/EC

CE Ⓜ II 3 G IIB X



All dimensions in mm