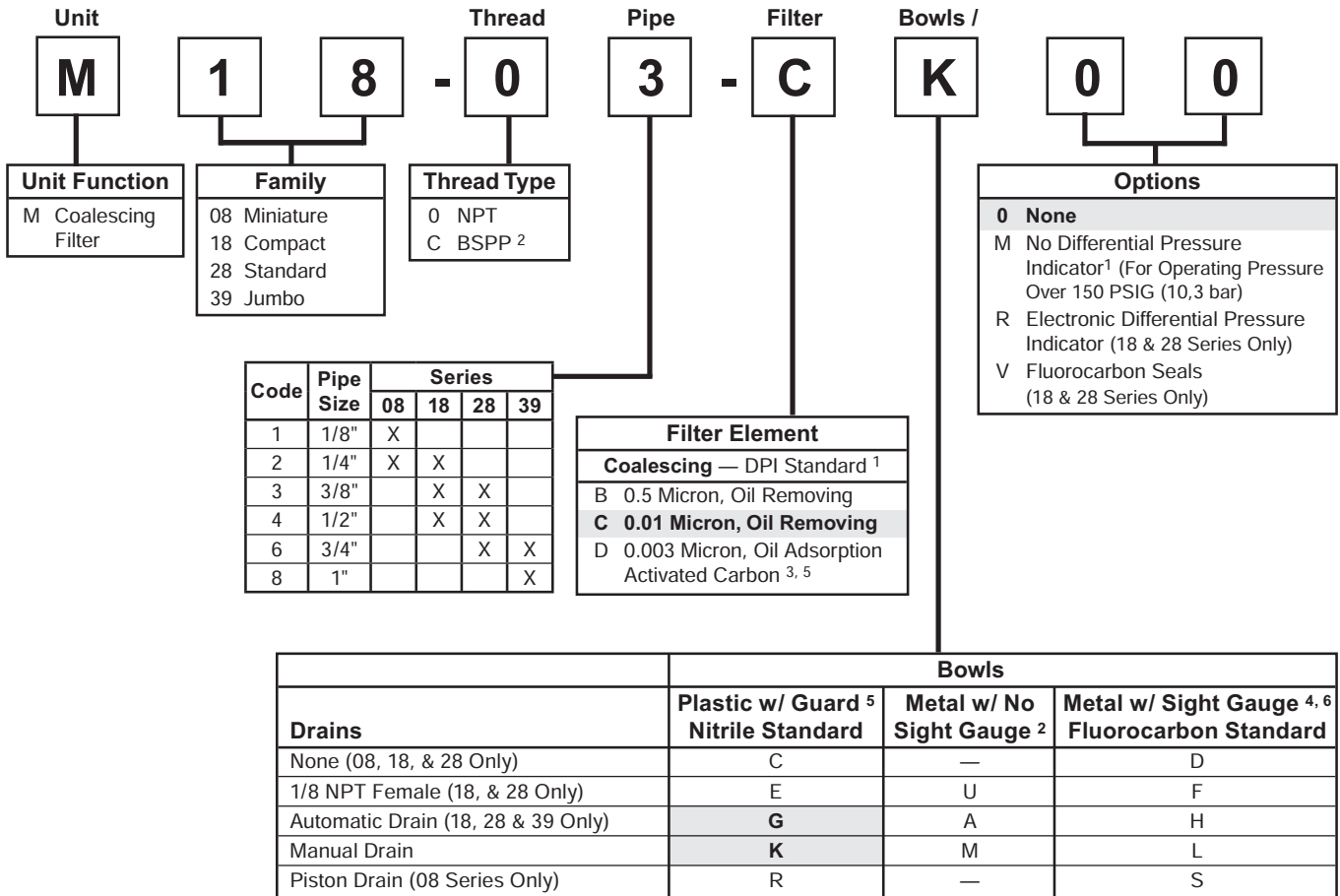


Coalescing (Oil Removal) Numbering System

 = "Most Popular"

B



¹ "M" Option not available on 08 Series. No DPI is Standard on M08.
² ISO, R228 (G Series)
³ Only C, D, K, and L Bowl / Drain Configurations Available.
⁴ M08 Filter has an all Metal Bowl (no Sight Gauge).
⁵ Not available in 39 Series.

"M" Series Coalescing Filters, with Type "B" 0.5 micron elements:
 All Wilkerson Type "M" Oil Removal (Coalescing) Filters with Type "B" 0.5 micron elements **exceed ISO** Class 2 for maximum particle size and concentration of solid contaminants, and exceed Class 3 on maximum oil content (ppm/wt).

"M" Series Coalescing Filters, with Type "C" 0.01 micron elements:
 All Wilkerson Type "M" Oil Removal (Coalescing) Filters with Type "C" 0.01 micron elements **exceed ISO** Class 1 for maximum particle size and concentration of solid contaminants, and exceed Class 1 on maximum oil content (ppm/wt).

"M" Series Adsorption Filters, with Type "D" activated carbon elements:
 All Wilkerson Type "M" adsorption filters with Type "D" 0.003 micron activated carbon elements **exceed ISO** Class 1 on maximum oil content (ppm/wt).

Note: When selecting from the options columns, please enter letters in alphabetical order for positions 7, 8, and 9.
For example:

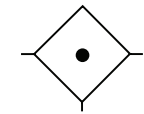
M 1 8 - 0 3 - C K 0 0

NOTE: All classes above refer to International Standards Organization (ISO) standard 8573-1, pertaining to maximum particle size and concentration of solid contaminants, and maximum oil content.

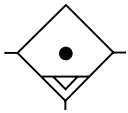
Coalescing Filter

 = "Most Popular"

M18



Coalescing Filter



Auto Drain

M18-02-CK00

Features

- High-efficiency Removal of Water, Oil Aerosols, and Solid Particulate Contaminants Down to 0.01 ppm / wt with Minimum Pressure Drop
- Modern Design and Appearance
- Light Weight
- High Flow Capacity
- Bowl Guard
- Quick-disconnect Bowl

Specifications

Flow Capacity*	1/4	40 SCFM (18.9 dm ³ /s)
	3/8	44 SCFM (20.3 dm ³ /s)
	1/2	48 SCFM (22.6 dm ³ /s)
Maximum Supply Pressure	Plastic Bowl	150 PSIG (10.3 bar) †
	Metal Bowl	150 PSIG (10.3 bar) †
Operating Temperature	Plastic Bowl	32° to 125°F (0° to 52°C)
	Metal Bowl	32° to 150°F (0° to 65.5°C)
Port Size	NPT / BSPP-G 1/4, 3/8, 1/2	
Standard Filtration	Micron	(B) 0.5, (C) 0.01 (D) 0.003 ppm wt**
Weight	1.1 lb (0.5 kg)	

* Inlet pressure 150 PSIG (10.3 bar). Pressure drop 3 PSID (0.2 bar) (dry element).

** Filtration temperature of 70°F (21°C) @ 100 PSIG (6.9 bar) with typical compressor lubricating oil and protected by Type C filter.

† Without pressure indicator — max. supply pressure for metal bowl version is 250 PSIG (17.2 bar).

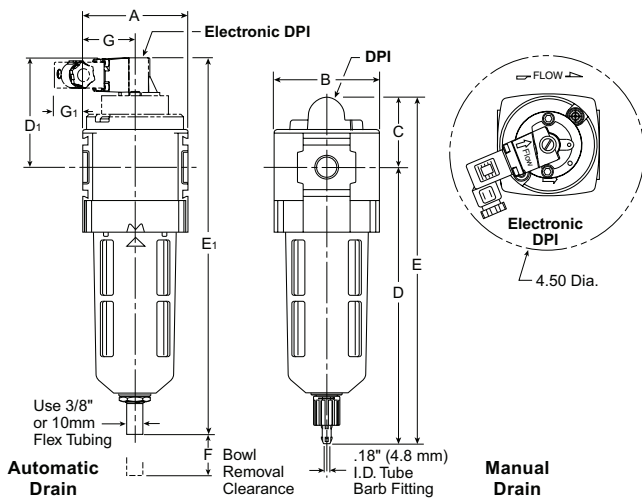
"M" Series Coalescing Filters, with Type "B" 0.5 micron elements: All Wilkerson Type "M" Oil Removal (Coalescing) Filters with Type "B" 0.5 micron elements **exceed ISO Class 2** for maximum particle size and concentration of solid contaminants, and exceed Class 3 on maximum oil content (ppm/wt).

"M" Series Coalescing Filters, with Type "C" 0.01 micron elements: All Wilkerson Type "M" Oil Removal (Coalescing) Filters with Type "C" 0.01 micron elements **exceed ISO Class 1** for maximum particle size and concentration of solid contaminants, and exceed Class 1 on maximum oil content (ppm/wt).

"M" Series Adsorption Filters, with Type "D" 0.003 micron activated carbon elements: All Wilkerson Type "M" adsorption filters with Type "D" 0.003 micron activated carbon elements **exceed ISO Class 1** on maximum oil content (ppm/wt).

Materials of Construction

Body	Zinc	
Body Cap	ABS	
Bowl	Plastic Bowl	Polycarbonate
	Metal Bowl	Aluminum
Filter Element	Type "B", "C"	Borosilicate Cloth
	Type "D"	Activated Carbon
Seals	Nitrile	
Sight Gauge	Metal Bowl	Polyamide (Nylon)



Dimensions

Models	Inches (mm)	A	B	C	D	D ₁	E	E ₁	F	G	G ₁
Standard Unit M18-XX-CK00		2.36 (60)	2.36 (60)	1.90 (48)	6.32 (161)	—	8.23 (209)	—	1.60 (41)	1.18 (30)	—
Automatic Drain M18-XX-CG00		2.36 (60)	2.36 (60)	1.90 (48)	5.98 (152)	—	8.00 (203)	—	1.60 (41)	1.18 (30)	—
Electronic Differential Pressure Indicator		2.36 (60)	2.36 (60)	—	6.41 (163)	2.67 (68)	—	9.05 (230)	1.60 (41)	1.18 (30)	.69 (18)
Metal Bowl with Sight Gauge / Automatic Drain		2.36 (60)	2.70 (69)	1.90 (48)	5.98 (152)	—	8.00 (203)	—	1.60 (41)	1.18 (30)	—
Metal Bowl with Sight Gauge / Manual Drain		2.36 (60)	2.70 (69)	1.90 (48)	6.32 (161)	—	8.23 (209)	—	1.60 (41)	1.18 (30)	—

= "Most Popular"

Replacement Bowl Kits

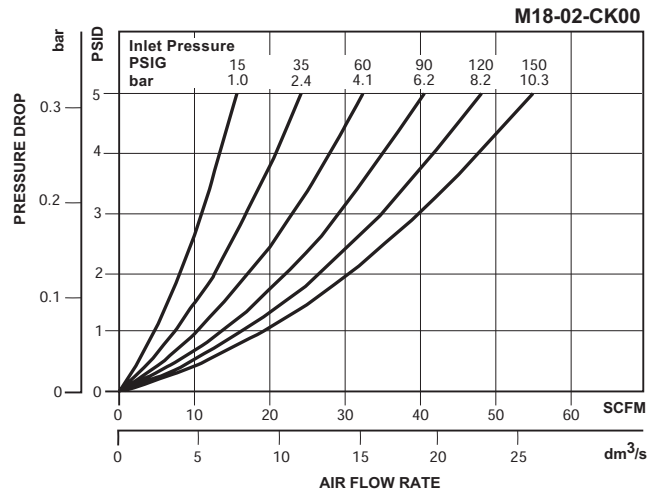
- Metal Bowl with Sight Gauge,
Automatic Float Drain..... GRP-96-637
- Metal Bowl with Sight Gauge, Manual Drain..... GRP-96-636
- Plastic Bowl –
- Bowl Guard, Auto Drain..... GRP-96-635
- Bowl Guard, Manual Drain..... GRP-96-634
- Bowl Guard, No Drain..... GRP-96-638

Replacement Element Kits

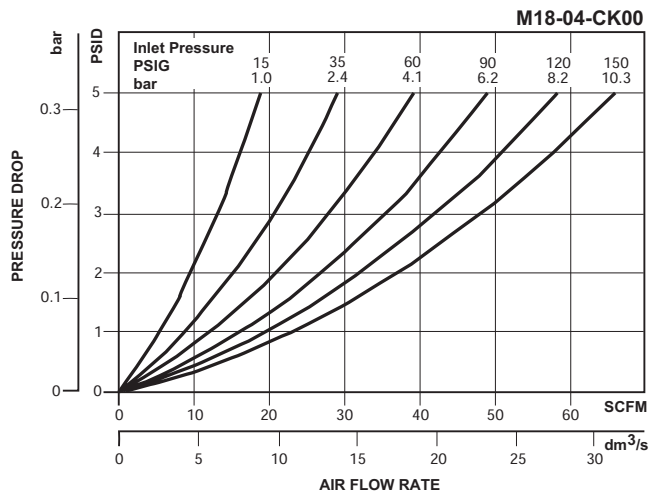
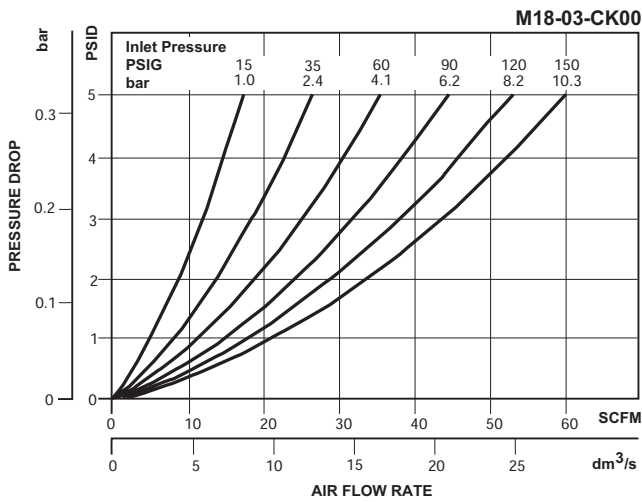
- Type "B", 0.5 Micron..... MSP-96-647
- Type "C", 0.01 Micron..... MTP-96-646
- Type "D", 0.003 Micron Activated Carbon..... MXP-96-650

Accessories

- Automatic Drain –
- Fluorocarbon..... GRP-95-981
- Nitrile..... GRP-95-973
- DPI Replacement Kit..... DP8-01-000
- Electronic DPI Conversion Kit..... GRP-96-823
(Converts visual DPI to electronic DPI)
- Electronic DPI Replacement Kit..... GRP-96-824
- Manual Drain..... GRP-96-685
- Sight Gauge Kit..... GRP-96-825
- Wall Mounting Bracket –
- L-Type..... GPA-96-604
- T-Type..... GPA-96-602



B



Ordering Information

Model Type	Port Size	Plastic Bowl / Bowl Guard / C Element	Plastic Bowl / Bowl Guard / B Element	Plastic Bowl / Bowl Guard / D Element	Metal Bowl / Sight Gauge / C Element	Metal Bowl / Sight Gauge / B Element	Metal Bowl / Sight Gauge / D Element
Manual Drain	1/4	M18-02-CK00	M18-02-BK00	M18-02-DK00	M18-02-CL00	M18-02-BL00	M18-02-DL00
	3/8	M18-03-CK00	M18-03-BK00	M18-03-DK00	M18-03-CL00	M18-03-BL00	M18-03-DL00
	1/2	M18-04-CK00	M18-04-BK00	M18-04-DK00	M18-04-CL00	M18-04-BL00	M18-04-DL00
Automatic Drain	1/4	M18-02-CG00	M18-02-BG00	N/A	M18-02-CH00	M18-02-BH00	N/A
	3/8	M18-03-CG00	M18-03-BG00	N/A	M18-03-CH00	M18-03-BH00	N/A
	1/2	M18-04-CG00	M18-04-BG00	N/A	M18-04-CH00	M18-04-BH00	N/A

Options - To order an option supplied with the unit model, add the appropriate coded suffix letter in the designated position of the model number.