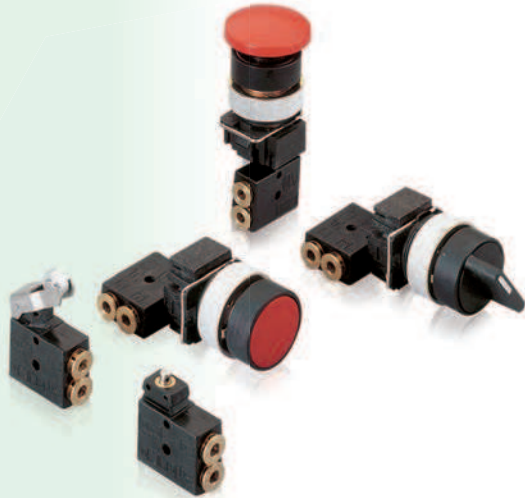


# Valvole serie Valves series **MC1**



## Dati tecnici - Technical data

Fluido Fluid	Aria filtrata Filtered air
-----------------	-------------------------------

Lubrificazione Lubrication	Con o senza lubrificazione (in aria umida) With or without lubrication (moist air)
-------------------------------	---

Lubrificante Lubricant	Compatibile con NBR (3°÷10° E) classe H Compatible with NBR (3°÷10° E) class H
---------------------------	---

## Portate - Flow rates

Connessioni Connections	Portata Flow rate NI/min					
	Tubo Ø4 Tube	64	76	90	105	120
Pressione Pressure bar	3	4	5	6	7	

## Caratteristiche costruttive - Construction features

Connessioni Connections	Tubo Ø4 Tube
Vie Ways	3/2 - 5/2
Funzioni Functions	Pulsante - Leva - Selettore a chiave Push button - Lever - Key
Corpo Body	NYLON 66 nero NYLON 66 black
Guarnizioni Seals	Gomma nitrilica NBR Nitrilic rubber NBR
Fissaggio Mounting	Ghiera di bloccaggio a pannello Panel mounting locking ring

## Caratteristiche tecniche - Technical features

Denominazione Denomination	Taglia Size A	
Diametro nominale Nominal diameter	mm	2,5
Pressione di esercizio Operating pressure	bar	1 ÷ 10
Temperatura di esercizio Operating temperature	-10°C + 60°C	
Installazione Installation	in ogni posizione in any position	

## A pulsante rasato 3/2 vie Shrouded push button 3/2 ways



MONOSTABILE  
3/2 VIE  
PILOT-SPRING  
3/2 WAYS

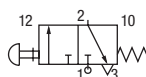
Simbolo Symbol	Connessioni Connections	Vie Ways	Peso Weight g	Codice * Code
	Tubo Ø4 Tube	3/2	36	<b>MPV 21</b>

* Pulsante Push button		
giallo yellow	●	<b>Cod.+G</b>
verde green	●	<b>Cod.+V</b>
rosso red	●	<b>Cod.+R</b>
blu blue	●	<b>Cod.+B</b>
nero black	●	<b>Cod.+N</b>

## A pulsante a fungo 3/2 vie Head push button 3/2 ways



MONOSTABILE  
3/2 VIE  
PILOT-SPRING  
3/2 WAYS



Connessioni  
Connections

Tubo Ø4  
Tube

Vie  
Ways  
g

3/2

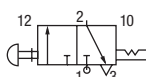
Peso  
Weight

51

Codice  
Code

MPE 21

BISTABILE  
3/2 VIE  
DOUBLE-PILOT  
3/2 WAYS



Tubo Ø4  
Tube

3/2

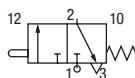
51

MPE 22

## Azionamento meccanico 3/2 vie Mechanical operated 3/2 ways



COMANDO BASE  
3/2 VIE  
BASE CONTROL  
3/2 WAYS



Tubo Ø4  
Tube

Forza azionamento  
sul dispositivo  
a 6 bar  
Operating force  
on device  
at 6 bar

1,6 kg

Vie  
Ways

3/2

Peso  
Weight  
g

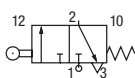
14

Codice  
Code

MC1



A RULLO  
3/2 VIE  
ROLLER LEVER  
3/2 WAYS



Tubo Ø4  
Tube

0,450 kg

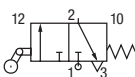
3/2

21

MC1L



A RULLO  
UNIDIREZIONALE  
3/2 VIE  
ONE WAY  
ROLLER LEVER  
3/2 WAYS



Tubo Ø4  
Tube

0,450 kg

3/2

25

MC1LS