



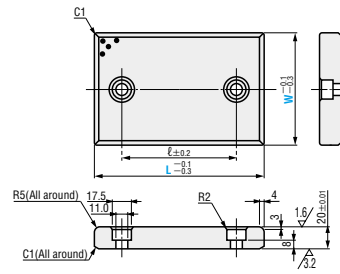
OIL-FREE SLIDE PLATES

—CAST 20mm TYPE · 2 BOLT HOLES / 3 BOLT HOLES / 4 BOLT HOLES—

—2 bolt holes—
MWF W= 28 ~ 75
MWFT W=100~150



RoHS

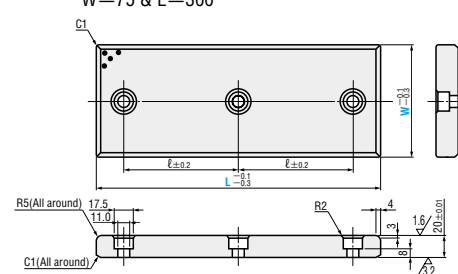


※For W=28 or 38, the R in the longer direction is R2.

—3 bolt holes—
MWF W= 75 & L=300



RoHS

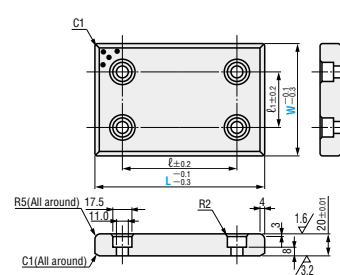


• Slide direction \leftrightarrow
 For W=28 or 38, slide direction is the longer direction (L) only.

—4 bolt holes—
MWF W= 100~200



RoHS



• The use of initial break-in greasing will make the product more effective.

FC250 Special solid lubricant (embedded)

ℓ	Catalog No.	W	L	
45	— 2 bolt holes — (* 3 bolt holes) MWF	28	75	
50			100	
75			125	
100			150	
150			200	
45		38	28	75
50				100
75				125
100				150
150				200
45		48	28	75
50				100
75				125
100				150
150				200
45	58	28	75	
50			100	
75			125	
100			150	
150			200	
200	75	28	75	
250			100	
300			125	
100*			150	
100			200	
150	— 2 bolt holes — MWFT	100	100	
75			125	
100			150	
150			200	
200			250	
200		300		
75		125	100	125
100				150
150				200
200				250
200				300
75		150	100	125
100				150
150				200
200				250
200	300			

ℓ	ℓ ₁	Catalog No.	W	L	
50	50	— 4 bolt holes — MWF	100	100	
75				125	
100				150	
150				200	
200				250	
200	50		100	125	300
75					125
100					150
150					200
200					250
200	100		150	150	300
100					200
150					250
200					300
200					300
100	150	200	200	250	
150				300	
200				300	
200				300	
250				300	

Order Catalog No. W — L
MWF 75 — 100
MWFT 125 — 200

Days to Ship **Quotation**

Price **Quotation**

■ Shims for oil-free slide plates P.1142

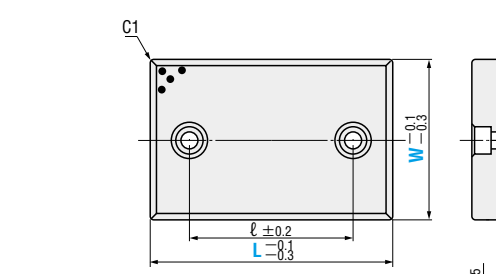
OIL-FREE SLIDE PLATES

—COPPER ALLOY 20mm TYPE · 2 BOLT HOLES / 4 BOLT HOLES—

—2 bolt holes—
SEW W= 28 ~ 75
SEWT W=100 ~ 150



RoHS

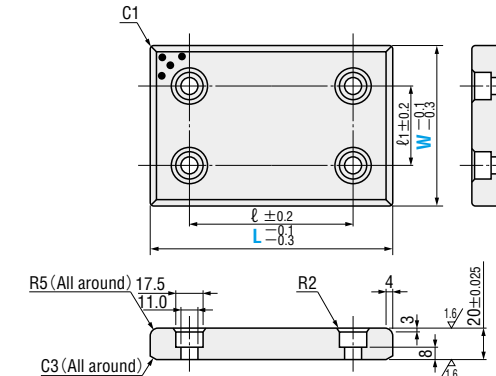


※For W=28 or 38, the R in the longer direction is R2.

—4 bolt holes—
SEW W=100 ~ 150



RoHS



• Slide direction \leftrightarrow
 For W=28 or 38, slide direction is the longer direction (L) only.

• The use of initial break-in greasing will make the product more effective.

■ Copper alloy
 ■ Special solid lubricant (embedded)

ℓ	Catalog No.	W	L	
45	— 2 bolt holes — SEW	28	75	
50			100	
75			125	
100			150	
150			200	
45		38	28	75
50				100
75				125
100				150
150				200
45		48	28	75
50				100
75				125
100				150
150				200
45	58	28	75	
50			100	
75			125	
100			150	
150			200	
25	75	28	75	
50			100	
75			125	
100			150	
150			200	
50	— 2 bolt holes — SEWT	100	100	
75			125	
100			150	
150			200	
200			250	
200		300		
75		125	100	125
100				150
150				200
200				250
200				300
75		150	100	125
100				150
150				200
200				250
200	300			

ℓ	ℓ ₁	Catalog No.	W	L	
50	50	— 4 bolt holes — SEW	100	100	
75				125	
100				150	
150				200	
200				250	
200	50		125	125	300
75					125
100					150
150					200
200					250
200	100		150	150	350
100					150
150					200
200					250
200					250

Order Catalog No. W — L
SEW 75 — 125
SEWT 150 — 200

Days to Ship **Quotation**

Price **Quotation**

■ Shims for oil-free slide plates P.1142