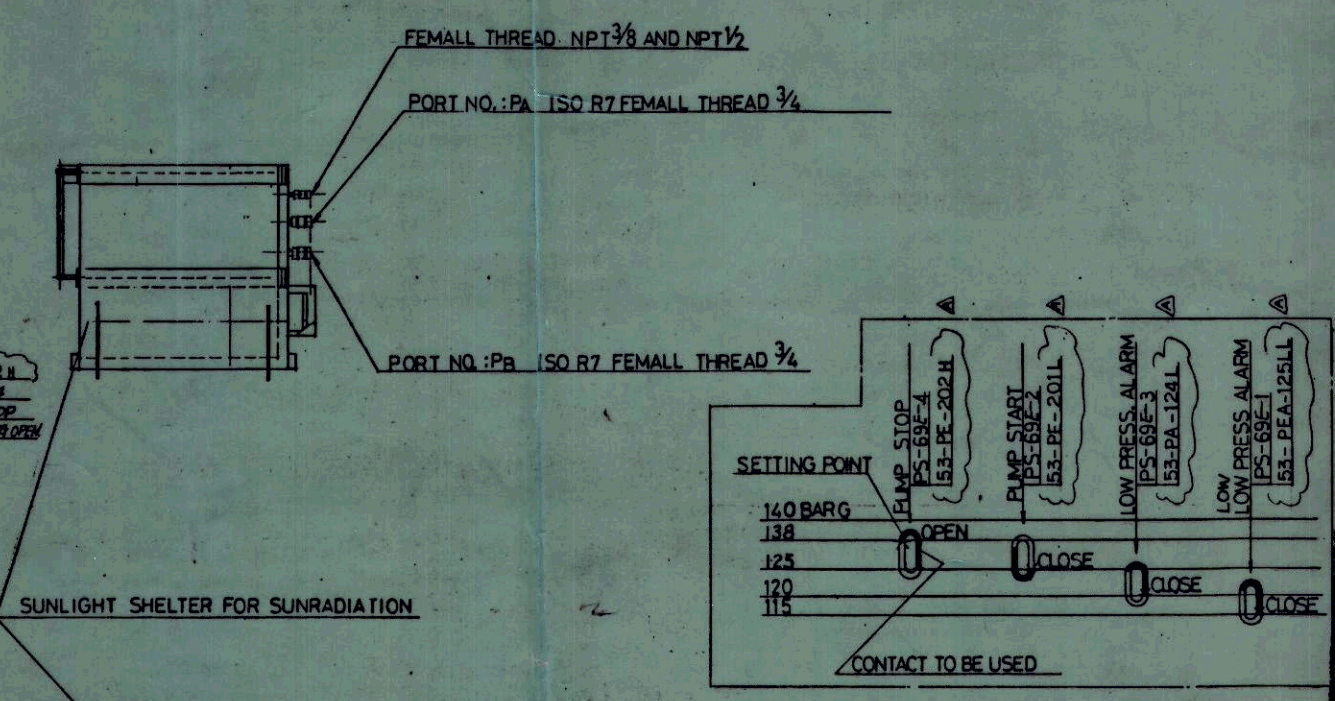


HYDRAULIC CIRCUIT DIAGRAM



SUNLIGHT SHELTER FOR SUNRADIATION

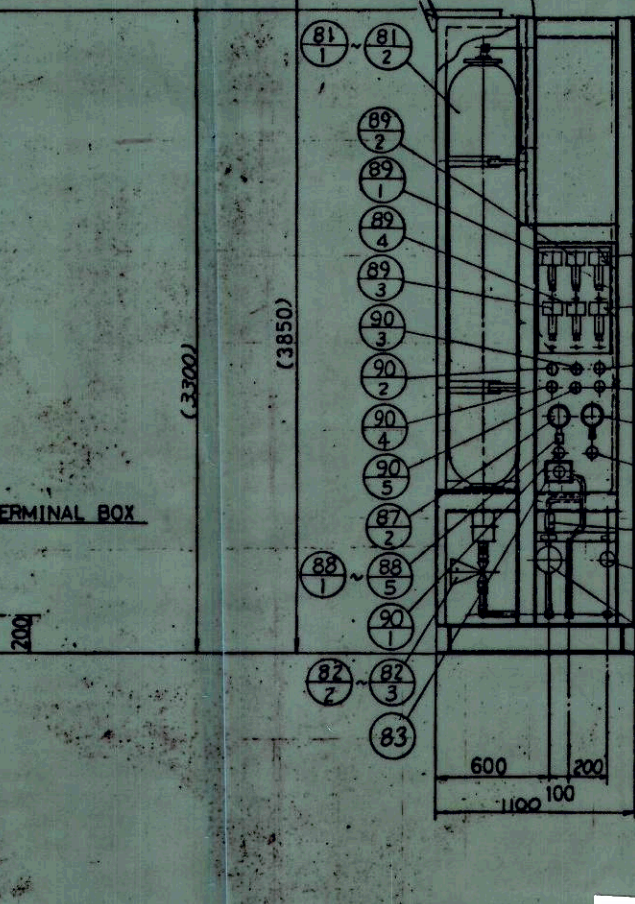
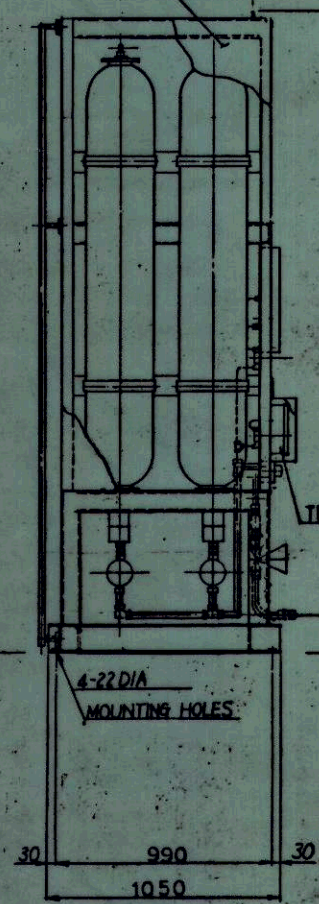
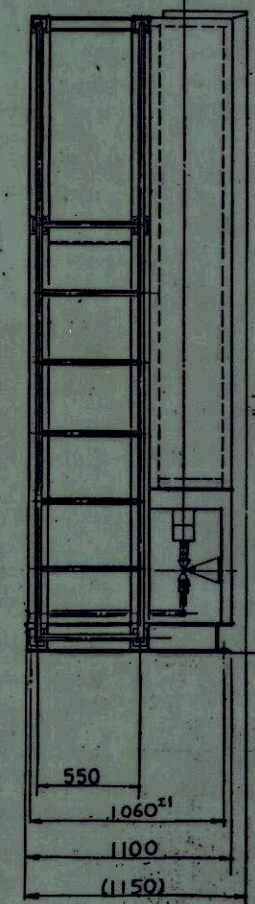
DESIGN SPECIFICATION	
DESIGN PRESS.	140 BARG
DESIGN AMBIENT TEMP	38.8 DEG C
HYD. TEST PRESS.	210 BARG
DESIGN CAPACITY	150 dm ³ x 2
MAX. CHARGING FLOW RATE	35 dm ³ /min
MAX. DISCHARGING FLOW RATE	25 dm ³ /min
TOTAL WEIGHT	ab. 1600 kg

NAME OF APPROVAL OFFICE: JGC CORPORATION			
JGC'S COMMENTS	Date	Name	Initial
Released for construction	8/6/92	0154	
Released for construction if changed as indicated			
Corrected to be resubmitted before starting manufacture			

NOTE: Approval of drawing in no way absolves suppliers from responsibility for their accuracy, or for the design, construction and performance of the equipment.

ITEM NO.	DESCRIPTION	QTY	MODEL
90	STOP VALVE	5	HIROSE: GY-G22
89	PRESSURE SWITCH	4	UNITED ELECT: J110-612
88	SURGE DAMPENER	5	NAGANO: FD10-383
87	PRESSURE GAUGE	2	ASHEROFT 4.5-1274TAS-041-0-750BAR
86	CHECK VALVE	1	REXROSE: S15AT1/B
85	STOP VALVE	4	FUJI KINZOKU: US125pC
84	PRESSURE SWITCH	2	UNITED ELECT: J110-612
83	FLOW CONTROL VALVE	1	REXROSE: ZFRM20-13/60
82	STOP VALVE	3	HIROSE: HT-1211-20
81	BLADDER TYPE ACCUMULATOR	2	NOK: AT210-150-30/S

SIPM	bc
SGPI CON.	12/10
SHELL KOSAN	10
MC CON.	12/80
PEN - 3	
TANK	
EQUIP.	
PIPING	
FIRE FIGHT	
FURNACE	
CIVIL	
ELEC.	
INST	10
ROTARY	
PR. CON.	
EX. FID.	
INSPECT	
CP	
SHIPPING	
J.M.I.	20
FILE	7/R
545	14
VENDOR	10



No 44522

VENDOR'S NAME	NIIGATA CHIKSAN
PROJECT NAME	LEG TERMINAL TABANGAO
JGC JOB NO.	0-1800
EQUIP. ITEM NO.	X-5301/5302
UNIT NO.	5300
JGC'S RBQ. NO.	HP 9010/27/02 SGP
PROJECT NO.	HP 9010/27 SGP
DWG NO.	T.-1,001,5 & 7 Rev. A

RELEASED

REV. NO.	DESCRIPTION	DATE	BY
A	REVISED (ADDED TAG NUMBERS)	July 23/92	M.K.

PROJ. NO.	QTY	SCALE	1/20
DATE	Feb 27 92		
DRAWN			
CHK'D			
APPR'D			

NIIGATA-CHIKSAN
2-6' x 62' RCMA-S
ACCUMULATOR UNIT ASSY
NOK DWGNO. 40653

NIIGATA ENGINEERING CO., LTD.

16