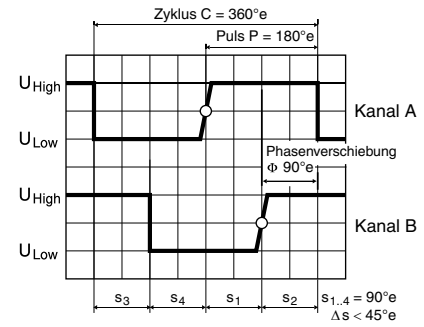
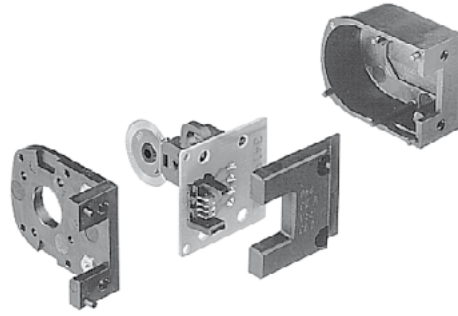
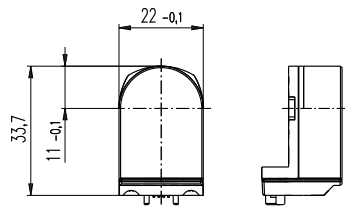


Encoder Enc 22 100 Impulse, 2 Kanal



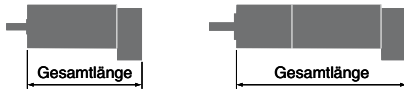
Drehrichtung cw (Definition cw S. 106)

- Lagerprogramm
- Standardprogramm
- Sonderprogramm (auf Anfrage)

Artikelnummern

103935	110520	110521
--------	--------	--------

Typ	103935	110520	110521
Impulszahl pro Umdrehung	100	100	100
Anzahl Kanäle	2	2	2
Max. Impulsfrequenz (kHz)	20	20	20
Max. Drehzahl (min ⁻¹)	12000	12000	12000
Wellendurchmesser (mm)	3	2	3

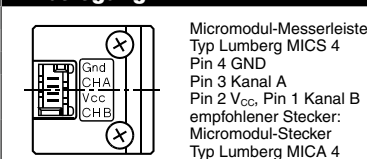


maxon Baukastensystem				
+ Motor	Seite	+ Getriebe	Seite	Gesamtlänge [mm] / ● siehe Getriebe
RE 25	135/137			68.6
RE 25	135/137	GP 26, 0.75 - 2.0 Nm	301	●
RE 25	135/137	GP 32, 0.75 - 4.5 Nm	303	●
RE 25	135/137	GP 32, 0.75 - 4.5 Nm	304	●
RE 25	135/137	GP 32, 1.0 - 6.0 Nm	307	●
RE 25	135/137	GP 32 S	334-336	●
A-max 19, 1.5 W	154			43.3
A-max 19, 1.5 W	154	GP 19, 0.1 - 0.3 Nm	288	●
A-max 19, 1.5 W	154	GS 20, 0.06 - 0.25 Nm	290	●
A-max 19, 1.5 W	154	GP 22, 0.1 - 2.0 Nm	293/295	●
A-max 19, 1.5 W	154	GS 24, 0.1 Nm	300	●
A-max 19, 1.5 W	154	GP 22 S	332/333	●
A-max 19, 2.5 W	156			45.9
A-max 19, 2.5 W	156	GP 19, 0.1 - 0.3 Nm	288	●
A-max 19, 2.5 W	156	GP 22, 0.1 - 2.0 Nm	293/295	●
A-max 19, 2.5 W	156	GS 24, 0.1 Nm	300	●
A-max 19, 2.5 W	156	GP 22 S	332/333	●
A-max 22	158/160			46.3
A-max 22	158/160	GP 22, 0.1 - 0.3 Nm	291	●
A-max 22	158/160	GP 22, 0.2 - 0.6 Nm	292	●
A-max 22	158/160	GP 22, 0.1 - 2.0 Nm	291-295	●
A-max 22	158/160	GS 24, 0.1 Nm	300	●
A-max 22	158/160	GP 22 S	332/333	●
A-max 26	162-168			59.1
A-max 26	162-168	GP 26, 0.75 - 4.5 Nm	301	●
A-max 26	162-168	GS 30, 0.07 - 0.2 Nm	302	●
A-max 26	162-168	GP 32, 0.75 - 4.5 Nm	303	●
A-max 26	162-168	GP 32, 0.75 - 4.5 Nm	304	●
A-max 26	162-168	GP 32, 1.0 - 6.0 Nm	308	●
A-max 26	162-168	GS 38, 0.1 - 0.6 Nm	313	●
A-max 26	162-168	GP 32 S	334-336	●

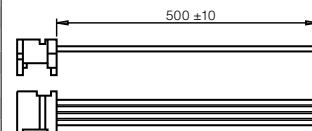
Technische Daten

Versorgungsspannung V _{CC}	5 V ± 10%
Ausgangssignal	TTL kompatibel
Phasenverschiebung φ	90°e ± 45°e
Signalanstiegszeit (typisch, bei C _L = 25 pF, R _L = 11 kΩ, 25°C)	200 ns
Signalabfallzeit (typisch, bei C _L = 25 pF, R _L = 11 kΩ, 25°C)	50 ns
Betriebstemperaturbereich	-20...+85°C
Trägheitsmoment der Impulsscheibe	≤ 0.05 gcm ²
Strom pro Kanal	min. -1 mA, max. 5 mA

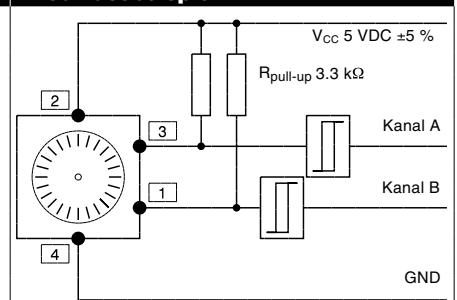
Pinbelegung



Bestellnummer für Stecker mit Kabel: 3419.506



Anschlussbeispiel



Umgebungstemperatur θ_U = 22 - 25 °C