

Fuse-switch disconnectors for cylindrical fuse-links

Advantages of fuse-switch disconnector PCF

→ 1-pole + N in one module



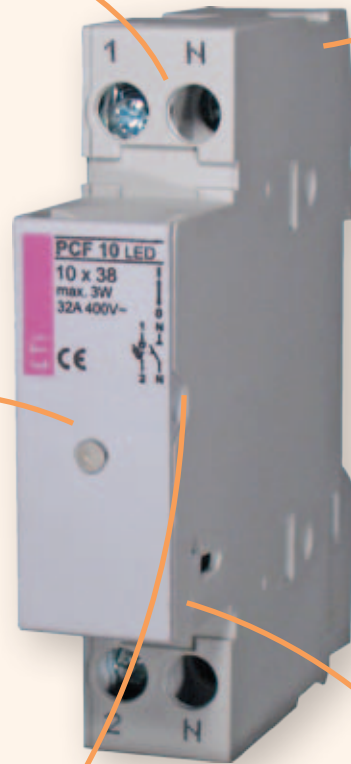
→ Double connection clamps



→ New method of mounting on the DIN rail and simple replacement



→ LED indicator version



→ Extraction of entire fuse-link when changing

→ Chamber for spare fuse-link



→ Sealing possibility

Fuse-switch disconnectors for cylindrical fuse-links

Fuse-switch disconnector PCF 8

Rated current **max. 20 A** Rated operational voltage **400 V** Utilization category **AC 22B**

1-pole

U_e/U_i [V]	I_{max} [A]	Code No.	Indicator	Weight [g]	Packaging [pcs]
400	20	002530001	-	58	12/108
		002530011	LED		
		*002531001	-	58	12/108
		*002531011	LED		

* Connection clamp on the right side "French version"

1-pole + N

U_e/U_i [V]	I_{max} [A]	Code No.	Indicator	Weight [g]	Packaging [pcs]
400	20	002530002	-	70	12/108
		002530012	LED		
		*002531002	-	70	12/108
		*002531012	LED		

* Connection clamp on the right side, N pole on the left "French version"

2-pole

U_e/U_i [V]	I_{max} [A]	Code No.	Indicator	Weight [g]	Packaging [pcs]
400	20	002530003	-	120	6/54
		002530013	LED		
		*002531003	-	120	6/54
		*002531013	LED		

* Connection clamp on the right side "French version"

3-pole

U_e/U_i [V]	I_{max} [A]	Code No.	Indicator	Weight [g]	Packaging [pcs]
400	20	002530004	-	180	4/36
		002530014	LED		
		*002531004	-	180	4/36
		*002531014	LED		

* Connection clamp on the right side "French version"

3-pole + N

U_e/U_i [V]	I_{max} [A]	Code No.	Indicator	Weight [g]	Packaging [pcs]
400	20	002530005	-	195	4/36
		002530015	LED		
		*002531005	-	195	4/36
		*002531015	LED		

* Connection clamp on the right side, N pole on the left "French version"



Fuse-switch disconnector PCF 10

Rated current
max. 32 A

Rated operational voltage
690 V a.c.

Utilization category
AC22B



1-pole

U_e/U_i [V]	I_{max} [A]	Code No.	Indicator	Weight [g]	Packaging [pcs]
690	32	002550001	-	58	12/108
		002550011	LED		
		*002551001	-	58	12/108
		*002551011	LED		

* Connection clamp on the right side "French version"

1-pole + N

U_e/U_i [V]	I_{max} [A]	Code No.	Indicator	Weight [g]	Packaging [pcs]
400/690	32	002550002	-	70	12/108
		002550012	LED		
		*002551002	-	70	12/108
		*002551012	LED		

* Connection clamp on the right side, N pole on the left "French version"



2-pole

U_e/U_i [V]	I_{max} [A]	Code No.	Indicator	Weight [g]	Packaging [pcs]
690	32	002550003	-	120	6/54
		002550013	LED		
		*002551003	-	120	6/54
		*002551013	LED		

* Connection clamp on the right side "French version"

3-pole

U_e/U_i [V]	I_{max} [A]	Code No.	Indicator	Weight [g]	Packaging [pcs]
690	32	002550004	-	180	4/36
		002550014	LED		
		*002551004	-	180	4/36
		*002551014	LED		

* Connection clamp on the right side "French version"



3-pole + N

U_e/U_i [V]	I_{max} [A]	Code No.	Indicator	Weight [g]	Packaging [pcs]
690	32	002550005	-	195	4/36
		002550015	LED		
		*002551005	-	195	4/36
		*002551015	LED		

* Connection clamp on the right side, N pole on the left "French version"

Fuse-switch disconnectors for cylindrical fuse-links

Fuse-switch disconnecter PCF CC

Rated current
max. 30 A

Rated operational voltage
600 V

Utilization category
AC 22B

1-pole

U_e/U_i [V]	I_{max} [A]	Code No.	Indicator	Weight [g]	Packaging [pcs]
600	30	002550101	-	58	12/108
		002550111	LED		

2-pole

U_e/U_i [V]	I_{max} [A]	Code No.	Indicator	Weight [g]	Packaging [pcs]
600	30	002550103	-	120	6/54
		002550113	LED		

3-pole

U_e/U_i [V]	I_{max} [A]	Code No.	Indicator	Weight [g]	Packaging [pcs]
600	30	002550104	-	180	4/36
		002550114	LED		



Accessories

Auxiliary switch PS PCF

U_n [V]	I_n [A]	Code No. PCF8	Code No. PCF10	Weight [g]	Packaging [pcs]	Contact
230	6	002559001	002559001	35	1/10	1 x b 1 x a/b



NEW EFD Fuse-switch disconnecter

Advantages of cylindrical fuse-switch disconnecter EFD

→ Compliance with IEC 60947-1, IEC 60947-3, UL 4248-1, UL 4248-4, UL 4248-8, UL 486E and CSA C22.2



→ More space for finger to open fuse carrier



→ Mounting on standard DIN 35 mm rail (DIN EN60715). The sizes 22x58 can be also fixed with screws on a flat base



→ All contact surfaces are silver plated

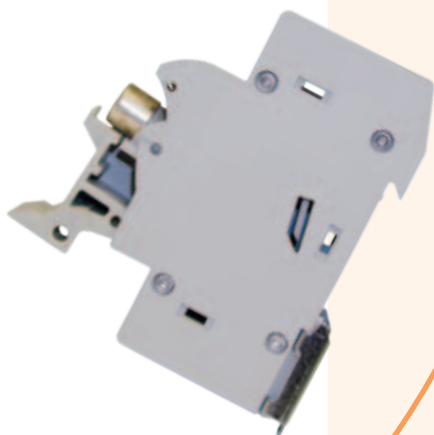


→ Complete protection against touch according to IP20

→ Changing of a fuse-link without danger of direct touch of parts under voltage



→ Possibility of sealing in ON or OFF positions



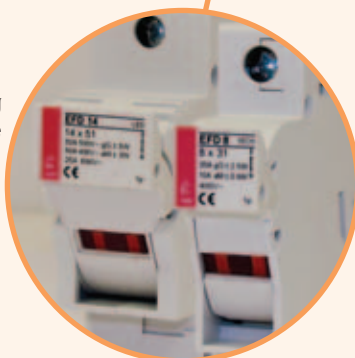
→ All plastic parts are made of material resistant to extremely high temperatures. Fuse carrier assures that a fuse link is not in touch with a housing



→ For all sizes a **version with electronic indicator** is available. There are two technical types of indicator:

- **L (LED)** with built-in LED diode which blinks after the fuse-link operates. The indicator is capable of operating in conditions of open circuit with minimum capacitance between connection cables. Operating voltage range from 50V to 690V.

- **I (NEON)** with neon lamp which is constantly lit after the fuse-link operates. The operational voltage range from 100V to 750V a.c.



→ Modular design – it is possible to assemble multi-pole versions at the building site for EFD 8, EFD 10, EFD 14 and EFD 22

Fuse-switch disconnectors for cylindrical fuse-links

Fuse-switch disconnecter EFD 8

New!

Rated current max. 20 A	Rated operational voltage 400 V	Utilization category AC22B	For fuse-links size 8x32
-----------------------------------	---	--------------------------------------	------------------------------------

1-pole

U_e/U_i [V]	I_{max} [A]	Code No.	Indica- tor	Adapter	Weight [g]	Packaging [pcs]
400	20	002520001	-		63	12/108
		002520011	L-LED		64	
		002520021	I-NEON		64	
		002520301	-	✓	68	
		002520311	L-LED	✓	69	
		002520321	I-NEON	✓	69	

1-pole + N

U_e/U_i [V]	I_{max} [A]	Code No.	Indica- tor	Adapter	Weight [g]	Packaging [pcs]
400	20	002520002	-		128	6/54
		002520012	L-LED		129	
		002520022	I-NEON		129	
		002520302	-	✓	138	
		002520312	L-LED	✓	139	
		002520322	I-NEON	✓	139	
		*002520007	-		128	
		*002520017	L-LED		129	
		*002520027	I-NEON		129	
		*002520307	-	✓	138	
		*002520317	L-LED	✓	139	
		*002520327	I-NEON	✓	139	

*N pole on left "French version"

2-pole

U_e/U_i [V]	I_{max} [A]	Code No.	Indica- tor	Adapter	Weight [g]	Packaging [pcs]
400	20	002520003	-		123	6/54
		002520013	L-LED		125	
		002520023	I-NEON		125	
		002520303	-	✓	134	
		002520313	L-LED	✓	135	
		002520323	I-NEON	✓	135	

3-pole

U_e/U_i [V]	I_{max} [A]	Code No.	Indica- tor	Adapter	Weight [g]	Packaging [pcs]
400	20	002520004	-		184	4/36
		002520014	L-LED		186	
		002520024	I-NEON		186	
		002520304	-	✓	200	
		002520314	L-LED	✓	201	
		002520324	I-NEON	✓	201	





3-pole + N

U_e/U_i [V]	I_{max} [A]	Code No.	Indica- tor	Adapter	Weight [g]	Packaging [pcs]
400	20	002520005	-		252	3/27
		002520015	L-LED		254	
		002520025	I-NEON		254	
		002520305	-	✓	273	
		002520315	L-LED	✓	274	
		002520325	I-NEON	✓	274	
		*002520008	-		252	
		*002520018	L-LED		254	
		*002520028	I-NEON		254	
		*002520308	-	✓	273	
		*002520318	L-LED	✓	274	
		*002520328	I-NEON	✓	274	

*N pole on left "French version"

Fuse-switch disconnector EFD 10

New!

Rated current
max. 32 A

Rated operational voltage
690 V

Utilization category
AC 22B

For fuse-links size
10x38



1-pole

U_e/U_i [V]	I_{max} [A]	Code No.	Indica- tor	Adapter	Weight [g]	Packaging [pcs]
690	32	002540001	-		63	12/108
		002540011	L-LED		64	
		002540021	I-NEON		64	
		002540301	-	✓	68	
		002540311	L-LED	✓	69	
		002540321	I-NEON	✓	69	

1-pole + N

U_e/U_i [V]	I_{max} [A]	Code No.	Indica- tor	Adapter	Weight [g]	Packaging [pcs]
400/690	32	002540002	-		128	6/54
		002540012	L-LED		129	
		002540022	I-NEON		129	
		002540302	-	✓	138	
		002540312	L-LED	✓	139	
		002540322	I-NEON	✓	139	
		*002540007	-		128	
		*002540017	L-LED		129	
		*002540027	I-NEON		129	
		*002540307	-	✓	138	
		*002540317	L-LED	✓	139	
		*002540327	I-NEON	✓	139	

*N pole on left "French version"



2-pole

U_e/U_i [V]	I_{max} [A]	Code No.	Indica- tor	Adapter	Weight [g]	Packaging [pcs]
690	32	002540003	-		123	6/54
		002540013	L-LED		125	
		002540023	I-NEON		125	
		002540303	-	✓	134	
		002540313	L-LED	✓	135	
		002540323	I-NEON	✓	135	

Fuse-switch disconnectors for cylindrical fuse-links

3-pole

U_e/U_i [V]	I_{max} [A]	Code No.	Indicator	Adapter	Weight [g]	Packaging [pcs]
690	32	002540004	-		184	4/36
		002540014	L-LED		186	
		002540024	I-NEON		186	
		002540304	-	✓	200	
		002540314	L-LED	✓	201	
		002540324	I-NEON	✓	201	

3-pole + N

U_e/U_i [V]	I_{max} [A]	Code No.	Indicator	Adapter	Weight [g]	Packaging [pcs]
690	32	002540005	-		252	3/27
		002540015	L-LED		254	
		002540025	I-NEON		254	
		002540305	-	✓	273	
		002540315	L-LED	✓	274	
		002540325	I-NEON	✓	274	
		*002540008	-		252	
		*002540018	L-LED		254	
		*002540028	I-NEON		254	
		*002540308	-	✓	273	
		*002540318	L-LED	✓	274	
		*002540328	I-NEON	✓	274	

*N pole on left *French version*



Fuse-switch disconnecter EFD CC

New!

Rated current
max. 30 A

Rated operational voltage
600 V

For fuse-links
Class CC acc to UL4248-4

1-pole

U_e/U_i [V]	I_{max} [A]	Code No.	Indicator	Adapter	Weight [g]	Packaging [pcs]
600	30	002540101	-		63	12/108
		002540111	L-LED		64	
		002540401	-	✓	68	
		002540411	L-LED	✓	69	

2-pole

U_e/U_i [V]	I_{max} [A]	Code No.	Indicator	Adapter	Weight [g]	Packaging [pcs]
600	30	002540103	-		123	6/54
		002540113	L-LED		125	
		002540403	-	✓	134	
		002540413	L-LED	✓	135	

3-pole

U_e/U_i [V]	I_{max} [A]	Code No.	Indicator	Adapter	Weight [g]	Packaging [pcs]
600	30	002540104	-		184	4/36
		002540114	L-LED		186	
		002540404	-	✓	199	
		002540414	L-LED	✓	201	



Fuse-switch disconnecter EFD 14

New!

Rated current
max. 50 A

Rated operational voltage
690 V

Utilization category
AC22B

For fuse-links size
14x51



1-pole

U_e/U_i [V]	I_{max} [A]	Code No.	Indicator	Weight [g]	Packaging [pcs]
690	50	002560001	-	102	12/96
		002560011	L-LED	103	

1-pole + N

U_e/U_i [V]	I_{max} [A]	Code No.	Indicator	Weight [g]	Packaging [pcs]
690	50	002560002	-	226	6/48
		002560012	L-LED	227	
		*002560007	-	226	
		*002560017	L-LED	227	

*N pole on left "French version"



2-pole

U_e/U_i [V]	I_{max} [A]	Code No.	Indicator	Weight [g]	Packaging [pcs]
690	50	002560003	-	206	6/48
		002560013	L-LED	208	

3-pole

U_e/U_i [V]	I_{max} [A]	Code No.	Indicator	Weight [g]	Packaging [pcs]
690	50	002560004	-	310	4/32
		002560014	L-LED	313	

3-pole + N

U_e/U_i [V]	I_{max} [A]	Code No.	Indicator	Weight [g]	Packaging [pcs]
690	50	002560005	-	434	3/24
		002560015	L-LED	437	
		*002560008	-	434	
		*002560018	L-LED	437	

*N pole on left "French version"



Fuse-switch disconnecter EFD 22

New!

Rated current
max. 100 A

Rated operational voltage
690 V

Utilization category
AC21B

For fuse-links size
22x58

1-pole

U_e/U_i [V]	I_{max} [A]	Code No.	Indicator	Weight [g]	Packaging [pcs]
690	100	002570001	-	156	3/105
		002570011	L-LED	158	

Fuse-switch disconnectors for cylindrical fuse-links

1-pole + N

U_e/U_i [V]	I_{max} [A]	Code No.	Indicator	Weight [g]	Packaging [pcs]
690	100	002570002	-	351	2/48
		002570012	L-LED	353	
		*002570007	-	351	
		*002570017	L-LED	353	

*N pole on left "French version"

2-pole

U_e/U_i [V]	I_{max} [A]	Code No.	Indicator	Weight [g]	Packaging [pcs]
690	100	002570003	-	317	2/48
		002570013	L-LED	321	

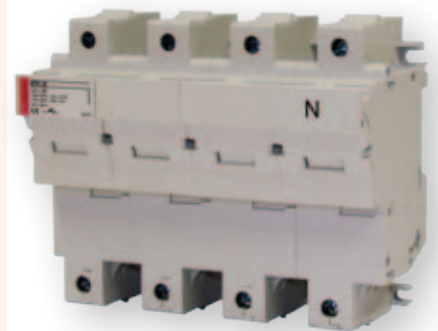
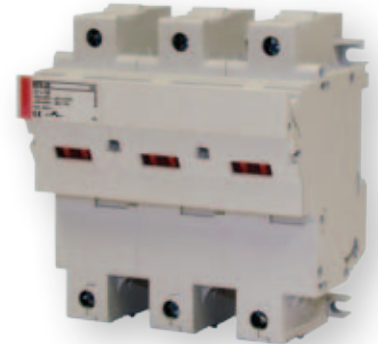
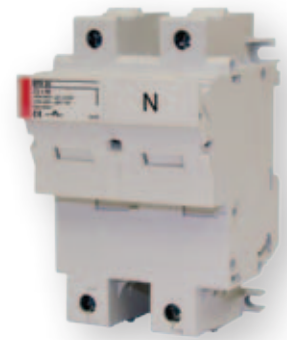
3-pole

U_e/U_i [V]	I_{max} [A]	Code No.	Indicator	Weight [g]	Packaging [pcs]
690	100	002570004	-	476	1/35
		002570014	L-LED	485	

3-pole + N

U_e/U_i [V]	I_{max} [A]	Code No.	Indicator	Weight [g]	Packaging [pcs]
690	100	002570005	-	671	1/24
		002570015	L-LED	677	
		*002570008	-	671	
		*002570018	L-LED	677	

*N pole on left "French version"



Fuse-switch disconnecter EFD J30

New!

Rated current
max. 30 A

Rated operational voltage
600 V

For fuse-links
Class J acc to UL4248-8

1-pole

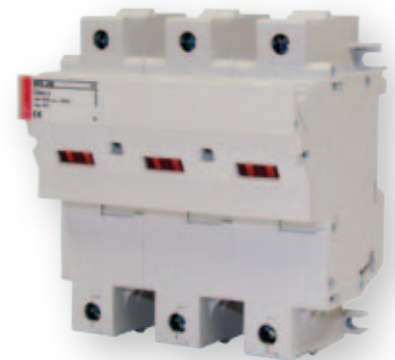
U_e/U_i [V]	I_{max} [A]	Code No.	Indicator	Weight [g]	Packaging [pcs]
600	30	002570101	-	156	3/105
		002570111	L-LED	158	

2-pole

U_e/U_i [V]	I_{max} [A]	Code No.	Indicator	Weight [g]	Packaging [pcs]
600	30	002570103	-	317	2/48
		002570113	L-LED	321	

3-pole

U_e/U_i [V]	I_{max} [A]	Code No.	Indicator	Weight [g]	Packaging [pcs]
600	30	002570104	-	476	1/35
		002570114	L-LED	485	



Accessories



Auxiliary switch PS EFD

U _n [V]	I _n [A]	Code No. EFD14	Code No. EFD22	Weight [g]	Packaging [pcs]	Contact
250	5	002569001	002579001	50	1/10	1 x make 1 x break

* Can be used with VLC 14 and VLC 22 Fuse-switch disconnectors

Auxiliary switch PS EFD is intended to be mounted with disconnectors EFD 14 and EFD 22 for all versions (1p, 2p, 1p+N, 3p, 3p+N). The width of apparatus is 9 mm, other dimensions comply with EFD 14 and EFD 22 series switches. Auxiliary switch PS EFD signals the operation of CH14 or CH 22 fuse-links only in the case a fuse-link is fitted with striking pin - see IEC 60 269-2 Figure 1a (III).



Connection kit

New!

Description	Code No.	For use with	Weight [g]	Packaging [pcs]
Connection kit 2p	002540948	EFD 8, EFD 10, EFH 10, PCF 8, PCF 10	96	1*/20
Connection kit 3p	002540949	EFD 8, EFD 10, PCF 8, PCF 10	162	1*/20
Connection kit 2p	002560948	EFD 14, EFH 14	144	1*/20
Connection kit 3p	002560949	EFD 14	217	1*/20
Connection kit 2p	002570948	EFD 22, EFD J30	191	1*/20
Connection kit 3p	002570949	EFD 22, EFD J30	300	1*/20

* Note: 1 kit suffices for the assembly of 50 sets