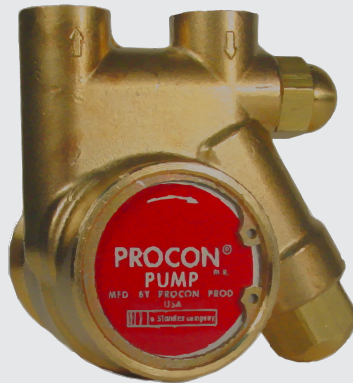


Series 1



**Features and Benefits**

- 140 GPH (425 LPH)\* at 200 PSI (14 bar)
- Internal Relief Valve set at 250 PSI
- Horsepower required 0.52 hp (387)
- Self priming (water) and maintenance free with low vibration and pulsation characteristics
- Works with fluid with viscosity up to 100 centipoise (cP), temperature between -4°F to 194°F (-20°C to 90°C)<sup>1</sup>
- Brass housing works with TDS max 5,000
- Clockwise rotation
- Integral strainer of 3.25 sq. in. for debris removal

**General Applications**

Cold Carb Circulation

\*GPH rating at 1725 RPM/60Hz and LPH rating at 1450 RPM/50Hz

**Technical Information**

Pump Housing Material	Low Lead Brass (0.2% max)		
Seals	Carbon / Ceramic		
Elastomers	Ethylene Propylene (EPDM)		
Valves	Plastic (high temp ultem)		
Drive configurations	Double flat		
Vanes	Carbon	Mounting Options	Clamp-on
Ports	NPT 3/8"	Unit Weight	Approx. 2.5 lbs. (1.1kg)

**Operating Range**

Max Static Pressure	100 PSI (7 BAR)	Max Discharge Pressure	250 PSI (17 BAR)
Fluid Temperature	-4° to 194°F (-20° to 90°C)	Speed	1750 at 60 Hz (1450 at 50 Hz)
Viscosity	100 cP	Wet Lift with Water	6 ft (2M)

161A140W11AA 250 Nominal Volume*										
Flow rate (GPH/ LPH)	Gallons Per Hour/Liters Per Hour					Brake Horsepower/Watts (motor shaft power)				
	Pressure (PSI/Bar)					Pressure (PSI/Bar)				
	50/3.4	100/6.9	150/10.3	200/13.8	250/17.5	50/3.4	100/6.9	150/10.3	200/13.8	250/17.5
140/425	143/447	141/441	139/434	137/428	135/422	0.17/127	0.28/209	0.40/298	0.52/387	0.63/469

**RoHS**

**WRAS**

**ISO**  
9001:2015

<sup>1</sup> Consult with manufacturer for extreme operating conditions

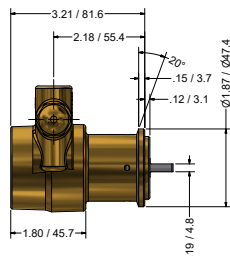
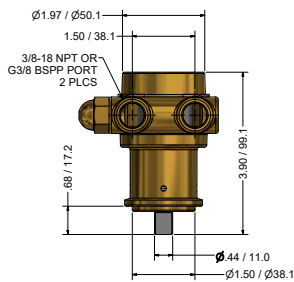
<sup>2</sup> Consult with manufacturer for information on other applications

<sup>3</sup> For certificate of compliance or declarations please visit our website or email at [productcompliance@proconpump.com](mailto:productcompliance@proconpump.com)

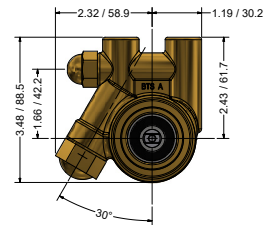
\* GPH rating at 1725 RPM/60Hz and LPH rating at 1450 RPM/50Hz

**161A140W11AA 250 ROTARY VANE PUMP DIMENSIONS**

**Clamp-On Mounting**



**With Strainer**



**NOTE:**

- All dimensions are in inches/millimeters
- Bronze and plastic coupling available for clamp-on

Tennessee, USA  
869 Seven Oaks Blvd.  
Suite 120  
Smyrna, TN 37167  
001.615.355.8000  
[sales@proconpump.com](mailto:sales@proconpump.com)

Mountmellick, Ireland  
Irishtown, Mountmellick, CO.  
Laois, Republic of Ireland  
00353.57.86.24350  
[sales@standex.ie](mailto:sales@standex.ie)

Tianjin, China  
J3A101, Western Area  
Xuefu Huigu Industrial Park  
Tianjin, China 300402  
00.86.22.86996885