

QUICKTRONIC® PROFESSIONAL QTP8

ECG for T8/Ø26mm fluorescent lamps



QTP8



LUMILUX® T8



Product Features:

- Up to 100.000 hours lifetime¹
- Lamp start with optimised filament preheating within 2 sec.
- Reliable lamp ignition between -25°C ...+55°C
- Suitable for luminaires of PC I + II
- Constant light output for UN = 198V ... 264V
- CELMA energy classification EEI = A2
- Automatic safety shut down at lamp failure
- Automatic restart after lamp replacement
- Suitable for emergency installations (DC operation)



Technical Data

| | |
|---|---|
| Max. cable diameter for IDC-contact [mm ²]: | s ² : 0.5; s-f ³ : 0.75 |
| Max. cable diameter for push-in contact [mm ²]: | s ² : 0.5...1.0 |
| Starting time: | t < 2 sec. |
| Line voltage: | 230 - 240 V |
| Voltage range (AC): | 198 - 264 V |
| Voltage range (DC): | 154-276 V; min. 198 V for lamp ignition |
| Line frequency: | 0, 50 - 60 Hz |
| Operating frequency: | 45 - 60 kHz |
| Electrical strength: | 300 V → permanent |
| Ambient temperature ta: | -25 °C to +55 °C |
| Measuring point temperature tc: | Max. +75 °C |
| U-OUT: | 380 V |

¹ at T = 65°C @ Tc. 50.000 h with max. 10% failure rate at tc = 75°C max




² s = stranded wire

³ s-f = stranded-flexible wire

Inrush current and max. number of ECG per circuit breaker

| ECG | Inrush Current | | Max. number of ECG per circuit breaker | | |
|-----------|--------------------|---------|--|--------|---------|
| | I _p [A] | TH [μs] | C: 10A | B: 16A | C: 16 A |
| QTP8 1x18 | 14 | 140 | 36 | 59 | 101 |
| QTP8 2x18 | 17 | 155 | 25 | 41 | 69 |
| QTP8 3x18 | 20 | 210 | 17 | 28 | 47 |
| QTP8 4x18 | 20 | 210 | 17 | 28 | 47 |
| QTP8 1x36 | 17 | 155 | 25 | 41 | 69 |
| QTP8 2x36 | 20 | 210 | 17 | 28 | 47 |
| QTP8 1x58 | 20 | 210 | 17 | 28 | 47 |
| QTP8 2x58 | 28 | 230 | 8 | 13 | 20 |

Standards and approval marks

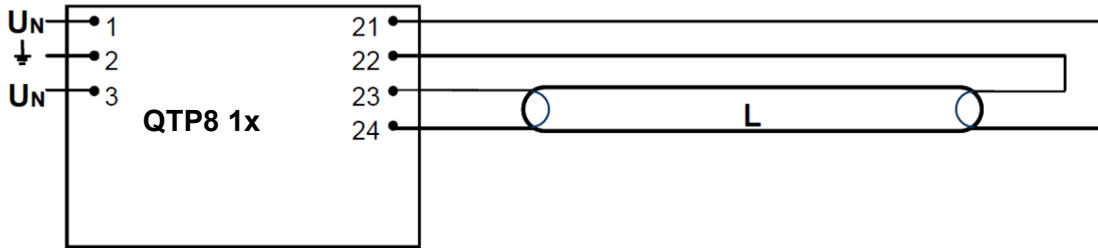
| | |
|---------------------|--|
| Safety: | acc. to EN 61347-2-3 / IEC 61347-2-3 |
| Radio interference: | acc. EN 55015: 2006 + A1: 2007 + A2: 2009 |
| Harmonic content: | acc. to EN 61000-3-2 / IEC 61000-3-2 |
| Immunity: | acc. to EN 61547 / IEC 61547 |
| Approval marks: |    |

Dimensions & weight

| Description | Length [mm] | Width [mm] | Height [mm] | Distance Mounting Holes [mm] | Weight [g] |
|-------------|-------------|------------|-------------|------------------------------|------------|
| QTP8 1x18 | 360 | 30 | 30 | 350 | 270 |
| QTP8 2x18 | 423 | 30 | 30 | 415 | 404 |
| QTP8 3x18 | 423 | 40 | 30 | 415 | 500 |
| QTP8 4x18 | 423 | 40 | 30 | 415 | 500 |
| QTP8 1x36 | 360 | 30 | 30 | 350 | 261 |
| QTP8 2x36 | 423 | 30 | 30 | 415 | 404 |
| QTP8 1x58 | 360 | 30 | 30 | 350 | 309 |
| QTP8 2x58 | 423 | 30 | 30 | 415 | 400 |

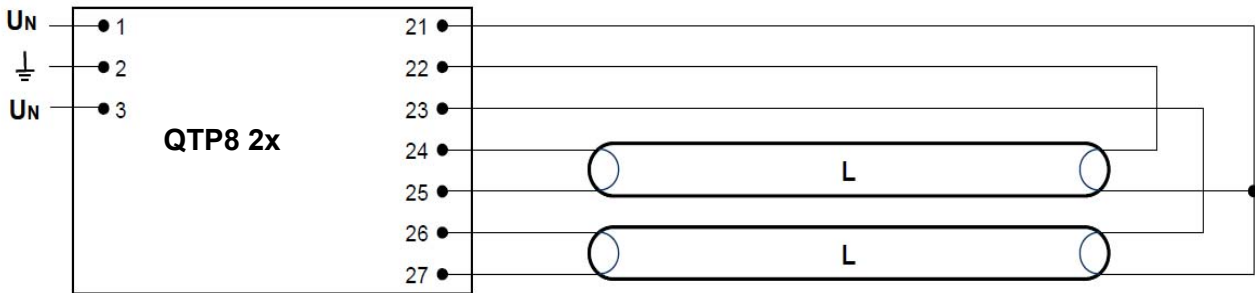
Lamp wiring

QTP8 1x...



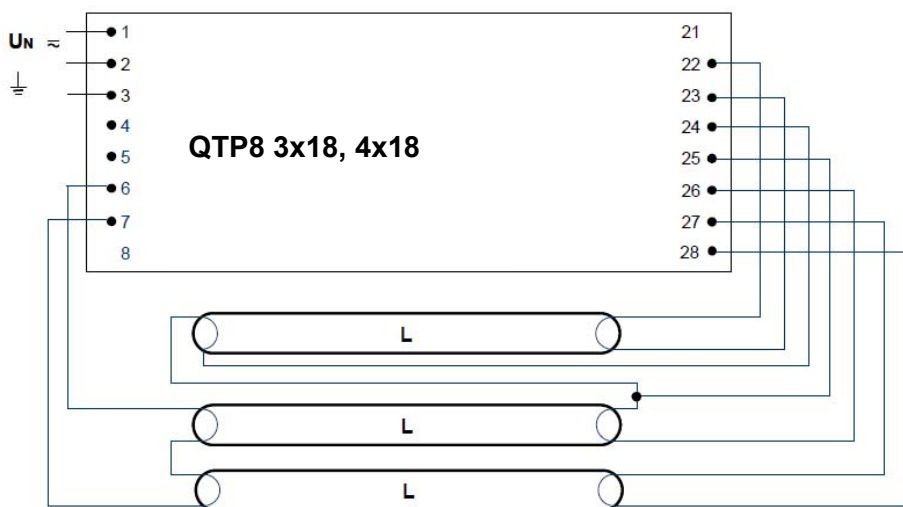
Max. permitted cable length in between ECG and lamp: 2.0 m (PIN 21, 22); 1.5 m (PIN 26, 27)

QTP8 2x...



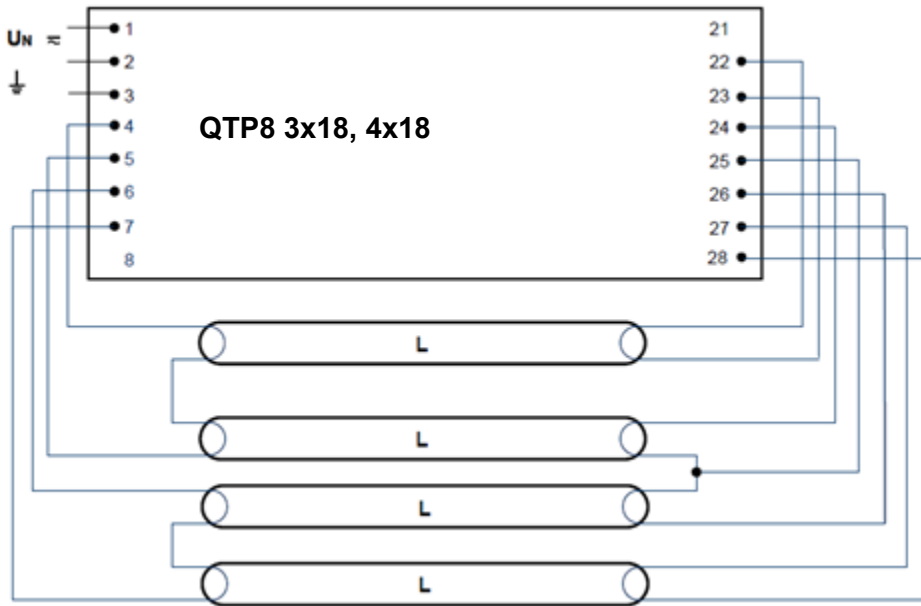
Max. permitted cable length in between ECG and lamp: 3.0 m (PIN 21, 22, 23); 1.5 m (PIN 24, 25, 26, 27)

QTP8 3x18, 4x18 – 3 lamp operation



Max. permitted cable length in between ECG and lamp: 1.0 m (PIN 22, 23, 27, 28); 1.5 m (PIN 4, 5, 6, 7, 24, 25, 26)

QTP8 3x18, 4x18 – 4 lamp operation



Max. permitted cable length in between ECG and lamp: 1.0 m (PIN 22, 23, 27, 28); 1.5 m (PIN 4, 5, 6, 7, 24, 25, 26)

Logistic Data

| Description | EAN 10 | EAN 40 | Packaging Unit |
|-------------|---------------|---------------|----------------|
| QTP8 1x18 | 4008321131584 | 4008321131591 | 20 |
| QTP8 2x18 | 4008321131607 | 4008321131614 | 20 |
| QTP8 3x18 | 4008321131706 | 4008321131713 | 20 |
| QTP8 4x18 | 4008321131706 | 4008321131713 | 20 |
| QTP8 1x36 | 4008321131621 | 4008321131638 | 20 |
| QTP8 2x36 | 4008321131645 | 4008321131652 | 20 |
| QTP8 1x58 | 4008321131669 | 4008321131676 | 20 |
| QTP8 2x58 | 4008321131683 | 4008321131690 | 20 |

Lifetime

| Measuring point temperature t_c : | Lifetime with max. 10% failure rate |
|-------------------------------------|-------------------------------------|
| 75 °C | 50,000 h |
| 65 °C | 100,000 h |

Lamp/ECG System Combination

| ECG | Lamp | HF lamp wattage [W] | System wattage [W] | Line current [A] | Luminous flux at 25°C [lm] | Luminous flux at 35°C [lm] | Power factor [λ] |
|-----------|--------|---------------------|--------------------|------------------|----------------------------|----------------------------|----------------------------|
| QTP8 1x18 | L18 | 16 | 18 | 0.09 | 1300 | - | 0.96 |
| QTP8 2x18 | 2x L18 | 2x16 | 35 | 0.17 | 2x1300 | - | 0.97 |
| QTP8 3x18 | 3x L18 | 3x16 | 56 | 0.26 | 3x1300 | - | 0.99 |
| QTP8 4x18 | 4x L18 | 4x16 | 73 | 0.32 | 4x1300 | - | 0.99 |
| QTP8 1x36 | L36 | 32 | 35 | 0.16 | 3200 | - | 0.96 |
| | L38 | 32 | 35 | 0.16 | 3200 | - | 0.96 |
| QTP8 2x36 | 2x L36 | 32 | 71 | 0.31 | 2x3200 | - | 0.96 |
| | 2x L38 | 32 | 71 | 0.31 | 2x3200 | - | 0.96 |
| QTP8 1x58 | L58 | 50 | 55 | 0.24 | 5000 | - | 0.98 |
| QTP8 2x58 | 2x L58 | 2x50 | 110 | 0.45 | 2x5000 | - | 0.98 |

For more information on ECG refer to <http://www.osram.com/ecg>

For more information on System Guarantee refer to <http://www.osram.com/guarantee>

GL LB EU&LM FT, Edition: 13.03.2012. Subject to change without notice. Despite careful review, the possibility of mistakes cannot be excluded – no guaranty will be provided.