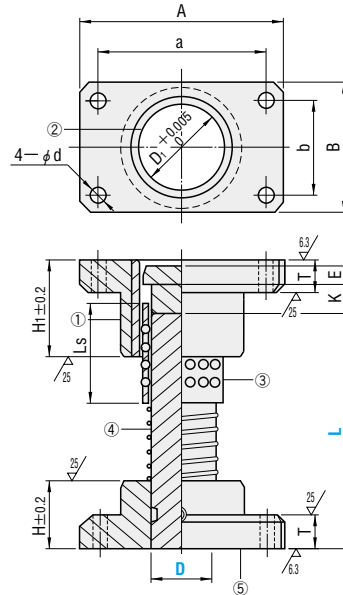


BALL GUIDE POST SETS

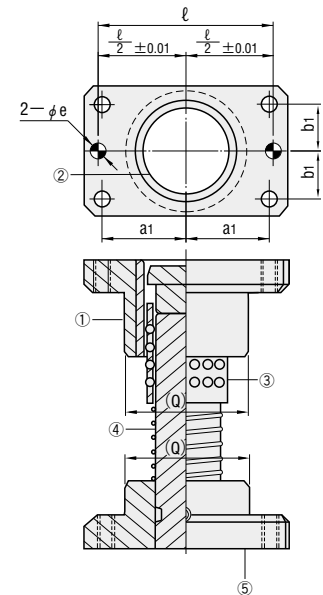
—FIXED STOPPER— (ALUMINUM·RESIN BALL CAGE)



MYAK (Aluminum type)



MYKP (Aluminum type with dowel hole)

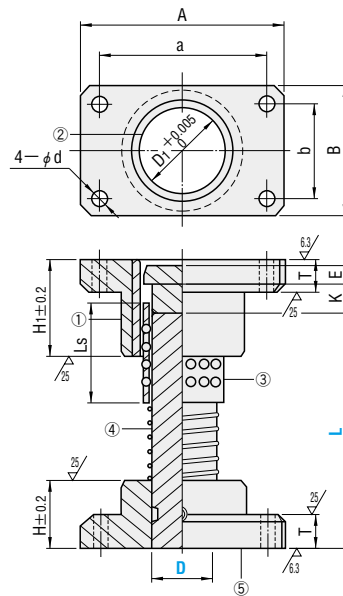


- ①⑤ M FC250
- ② M SUJ2
- ③ 58HRC~
- ④ Aluminum alloy
- ⑤ SUJ2
- ⑥ 58HRC~ (Induction hardening)

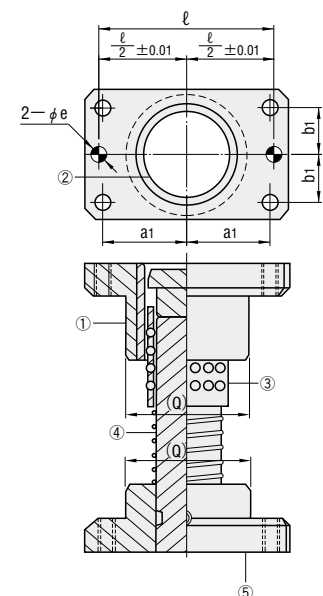
Ⓚ (Q) values are reference only.



MYJK (Resin type)



MJPK (Resin type with dowel hole)



- ①⑤ M FC250
- ② M SUJ2
- ③ 58HRC~
- ④ POM (Polyacetal resin)
- ⑤ SUJ2
- ⑥ 58HRC~ (Induction hardening)

Ⓚ (Q) values are reference only.

Ⓚ Perpendicularity of guide holder bottom and guide post: 0.02mm/100mm or less (Refer to P.944.)

D	D1	A	B	a	b	d	H	H1	T	(Q)	K	Stopper fixed	E	Ls	ℓ	a1	b1	eH7	⑥ Provided bolt	⑦ Provided dowel pins
25	31	84	48	66	30	9	30	50	20	46	20	5	50	66	33	15	8	+0.015 0	CB 8—35	MSTM 8—30
32	40	100	58	76	36	11	40	60	20	56	25	5	60	76	38	18	8		CB10—40	MSTM 8—30
38	48	130	75	100	44	11	50	70	25	73	30	10	70	100	50	22	10		CB10—45	MSTM10—40
50	60	155	90	125	60	14	65	90	25	87	40	10	90	125	62.5	30	10		CB12—50	MSTM10—40
60	70	190	120	150	80	18	75	100	30	117	50	15	100	150	75	40	13	+0.018 0	CB16—60	MSTM13—50

Catalog No.	Type	D	L				Base unit price 1~9 pieces				
			MYAK	MYKP	MYJK	MJKP					
25	MYAK	90	100	110	120						
			130	140	150	160					
						170	180	200			
32	MYKP	110	120	130	140	150					
							160	170	180	200	
38	MYJK	130	140	150	160						
50	MJKP	170	180	200	220						
60		200	220								
			240	260							
					300	350					
							300	350			

Quotation



Order Catalog No. — L
MYK 50 — 200



Price Quotation



Days to Ship Quotation



Alterations Catalog No. — L(LC) — (M·B·H·N·C...etc.)
MYJK 50 — LC230 — B—H
Quotation

Alteration	Code	Spec.	D	1Code
	LC	Post length change 1mm increments LCmin. ≤ LC < Lmax. Details of alteration P.944	25-32 38-50 60	
	M	Machining for mounting of a stroke end block Tap holes are machined for attaching a stroke end block. Details of alteration P.944	25~60	Quotation
	Bushing	Machining of flange for reversed bushing and/or holder orientation Use of the reversed bushing and/or holder allows the die height to be reduced. Ⓚ Alterations B and H can be combined at the same time. Ⓚ The post length is measured from the holder bottom. Details of alteration P.944	25-32 38-50 60	
	Holder			
	Holder bottom			

Alteration	Code	Spec.	D	1Code
	BKC	Bushing H1 dimension tolerance change H1±0.2 ⇔ ±0.1	25-32 38-50 60	
	HKC	Holder H dimension tolerance change H±0.2 ⇔ ±0.1	25-32 38-50 60	
	N	Addition of locating dowel holes Locating dowel holes are machined on holder. (2 positions) Ⓚ Can be used for MYAK and MYJK. Ⓚ Dowel pins are not provided.	25-32 38-50 60	Quotation
	C	Addition of locating dowel hole (1 hole at center) Locating dowel hole is machined at center of post. Ⓚ Dowel pin is not provided.	25-32 38-50 60	
	BSC	Ball retainer change Provided ball cage is changed to the high rigidity type. Aluminum: MBSH Resin: MBJH		1Code D Resin length MBSH MBJH 25 30 32 60 38 70 50 90 60 100 Quotation