

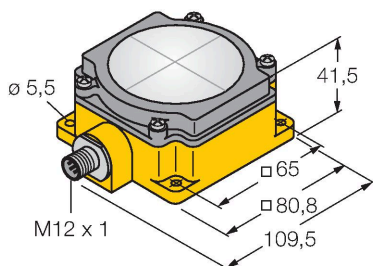
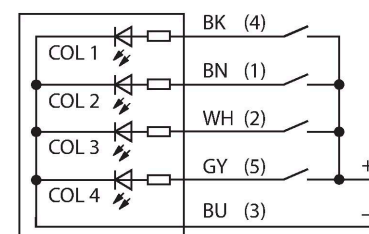
K80L4GRYB1PQ

LED Indicator – Beacon

Features

- M12 x 1 connector, male, 5-pin
- Segmented display area
- Horizontally divided
- Multicolor: Green (COL 1) / Red (COL 2) / Yellow (COL 3) / Blue (COL 4)
- Operating voltage 18...30 VDC
- Protection class IP67

Wiring diagram



Technical data

Type	K80L4GRYB1PQ
ID	3077883
Signal and display data	
Purpose	LED indicator light
Function	Area light
Light type	Green Red Yellow Blue
Dimmable	no
Features of color 1	Green, Miscellaneous
Features of color 2	Red
Features of color 3	Yellow
Features of color 4	Blue
Electrical data	
Operating voltage	18...30 VDC
Max. current consumption per color	90 mA
Input type	PNP
Response time typical	< 250 ms
Mechanical data	
Cascadable	No
Design	Rectangular, K80L
Dimensions	107.6 x 80.9 x 41.7 mm
Housing material	Plastic, PC, Yellow
Window material	Acrylic, diffuse
Electrical connection	Connector, M12 x 1, PVC
Number of cores	5

Technical data

Ambient temperature	-40...+50 °C
Protection class	IP67
Tests/approvals	
Approvals	CE

Accessories

SMBDX80DIN	3077161
------------	---------

Mounting panel for DIN rail, suited for CP80, DX80, K80, Q80, operating temperature: -20...90 °C

Accessories

Dimension drawing	Type	ID	
	RKC4.5T-2/TEL	6625016	Connection cable, female M12, straight, 5-pin, cable length: 2 m, sheath material: PVC, black; cULus approval; other cable lengths and qualities available, see www.turck.com
	WKC4.5T-2/TEL	6625028	Connection cable, female M12, angled, 5-pin, cable length: 2 m, sheath material: PVC, black; cULus approval; other cable lengths and qualities available, see www.turck.com