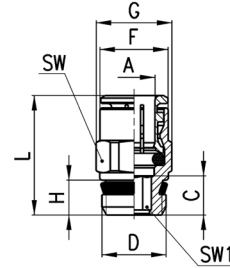


Fittings Mod. S6510

Male Connector Sprint®



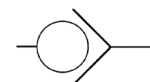
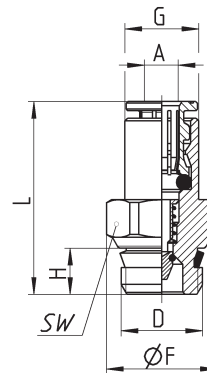
| DIMENSIONS | | | | | | | | | | |
|--------------|----|------|------|------|------|-----|------|----|-----|------------|
| Mod. | A | D | C | F | G | H | L | SW | SW1 | Weight (g) |
| S6510 4-1/8 | 4 | G1/8 | 3.8 | 8.8 | 13.2 | 5.5 | 18 | 12 | 2.5 | 9 |
| S6510 4-1/4 | 4 | G1/4 | 5.5 | 8.8 | 15.2 | 7 | 19.5 | 14 | 2.5 | 15 |
| S6510 5-1/8 | 5 | G1/8 | 3.8 | 9.8 | 13.2 | 5.5 | 19 | 12 | 3 | 8 |
| S6510 5-1/4 | 5 | G1/4 | 5.5 | 9.8 | 15.2 | 7 | 20 | 14 | 3 | 14 |
| S6510 6-1/8 | 6 | G1/8 | 6 | 11.7 | 13.2 | 5.5 | 22 | 12 | 4 | 10 |
| S6510 6-1/4 | 6 | G1/4 | 5.5 | 11.7 | 15.2 | 7 | 21 | 14 | 4 | 14 |
| S6510 6-3/8 | 6 | G3/8 | 6.5 | 11.7 | 20.5 | 8 | 22.5 | 19 | 4 | 27 |
| S6510 8-1/8 | 8 | G1/8 | 7.5 | 13.7 | 15.2 | 5.5 | 25 | 14 | 5 | 13 |
| S6510 8-1/4 | 8 | G1/4 | 6.5 | 13.7 | 15.2 | 7 | 24 | 14 | 6 | 14 |
| S6510 8-3/8 | 8 | G3/8 | 6 | 13.7 | 20.5 | 8 | 23.5 | 19 | 6 | 25 |
| S6510 8-1/2 | 8 | G1/2 | 7.5 | 13.7 | 24.5 | 9 | 25 | 22 | 6 | 43 |
| S6510 10-1/4 | 10 | G1/4 | 8.3 | 15.4 | 18.5 | 7 | 28.5 | 17 | 7 | 23 |
| S6510 10-3/8 | 10 | G3/8 | 5.3 | 15.4 | 20.5 | 8 | 25.5 | 19 | 8 | 27 |
| S6510 10-1/2 | 10 | G1/2 | 4.8 | 16 | 24.5 | 9 | 25 | 22 | 8 | 39 |
| S6510 12-1/4 | 12 | G1/4 | 10.3 | 18.3 | 20.5 | 7 | 29.5 | 19 | 7 | 26 |
| S6510 12-3/8 | 12 | G3/8 | 9.3 | 18.3 | 20.5 | 8 | 28.5 | 19 | 9 | 30 |
| S6510 12-1/2 | 12 | G1/2 | 5.8 | 18.3 | 24.5 | 9 | 25 | 22 | 10 | 36 |
| S6510 14-3/8 | 14 | G3/8 | 10.3 | 20.5 | 24.5 | 8 | 30.5 | 22 | 9 | 42 |
| S6510 14-1/2 | 14 | G1/2 | 6.3 | 20.5 | 24.5 | 9 | 26.5 | 22 | 12 | 34 |
| S6510 16-1/2 | 16 | G1/2 | 9 | 23.5 | 26.5 | 9 | 32 | 24 | - | 42 |
| S6510 16-3/4 | 16 | G3/4 | 3.5 | 23.5 | 27.3 | 9 | 26.5 | 24 | - | 46 |



Fittings Mod. S6510...-LF

Male Connector Sprint® with self-retaining device

This version interrupts the air flow when the tube is disconnected and restores it when reconnected.



| DIMENSIONS | | | | | | | | |
|----------------|---|------|------|------|-----|------|----|------------|
| Mod. | A | D | F | G | H | L | SW | Weight (g) |
| S6510 4-1/8-LF | 4 | G1/8 | 13.2 | 8.8 | 5.5 | 23 | 12 | 11 |
| S6510 6-1/8-LF | 6 | G1/8 | 13.2 | 11.7 | 6 | 30.5 | 12 | 15 |