

# TITANO range

*Medium and high power  
symmetrical and  
asymmetrical floodlights*



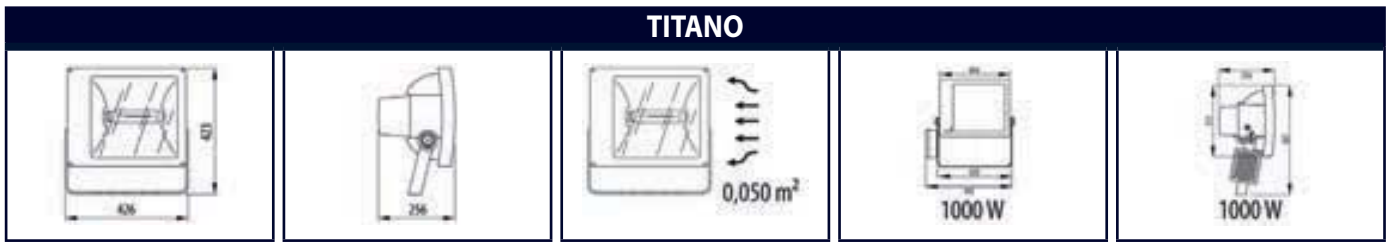
Symmetrical and asymmetrical medium-power floodlight.

- IP66 protection class.
- Easy wiring and maintenance, without aiming variation.
- Independent opening of the optic compartment and the electrical accessory compartment.
- Fully removable electrical accessory plate.
- Front opening through stainless steel clips.
- ATEX versions available.

# TITANO RANGE

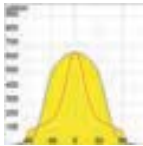
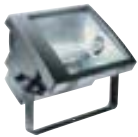
MEDIUM AND HIGH POWER SYMMETRICAL AND ASYMMETRICAL FLOODLIGHTS

TITANO RANGE



## SYMMETRICAL DIFFUSED OPTICS

GW84460S



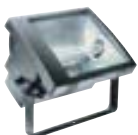
### WIRED VERSIONS WITH P.F. CORRECTION COMPLETE WITH LAMP - IP66 - CLASS I



Code	Lamp power	Lamp supplied	Lamp holder	Lamp current	Colour	Weight (kg)	Pack Carton
<b>VOLTAGE: 230 V - 50 Hz</b>							
GW 84 460 S	150 W	ST	E40	1.8 A	Graphite grey	10.1	1
GW 84 461 S	250 W	ST	E40	3 A	Graphite grey	10.8	1
GW 84 461 M	250 W	MT	E40	3 A	Graphite grey	10.8	1
GW 84 465 M	250 W	MT*	E40	2.2 A	Graphite grey	10	1
GW 84 462 Q	250 W	QE	E40	2.2 A	Graphite grey	9.9	1
GW 84 464 S	400 W	ST	E40	4.2 A	Graphite grey	12.2	1
GW 84 464 M	400 W	MT	E40	4.2 A	Graphite grey	12.2	1
GW 84 466 M	400 W	MT*	E40	3.4 A	Graphite grey	10.7	1
<b>VOLTAGE: 240 V - 50 Hz</b>							
GW 84 470 S	150 W	ST	E40	1.8 A	Graphite grey	10.1	1
GW 84 471 S	250 W	ST	E40	3 A	Graphite grey	10.8	1
GW 84 471 M	250 W	MT	E40	3 A	Graphite grey	10.8	1
GW 84 475 M	250 W	MT*	E40	2.2 A	Graphite grey	10	1
GW 84 472 Q	250 W	QE	E40	2.2 A	Graphite grey	9.9	1
GW 84 474 S	400 W	ST	E40	4.2 A	Graphite grey	12.2	1
GW 84 474 M	400 W	MT	E40	4.2 A	Graphite grey	12.2	1
GW 84 476 M	400 W	MT*	E40	3.4 A	Graphite grey	10.7	1
<b>VOLTAGE: 220 V - 60 Hz</b>							
GW 84 480 S	150 W	ST	E40	1.8 A	Graphite grey	10.1	1
GW 84 481 S	250 W	ST	E40	3 A	Graphite grey	10.8	1
GW 84 481 M	250 W	MT	E40	3 A	Graphite grey	10.8	1
GW 84 485 M	250 W	MT*	E40	2.2 A	Graphite grey	10	1
GW 84 482 Q	250 W	QE	E40	2.2 A	Graphite grey	9.9	1
GW 84 484 S	400 W	ST	E40	4.2 A	Graphite grey	12.2	1
GW 84 484 M	400 W	MT	E40	4.2 A	Graphite grey	12.2	1
GW 84 486 M	400 W	MT*	E40	3.4 A	Graphite grey	10.7	1

\* Lamp with striking voltage of 0.7 ÷ 1kV.

GW84433



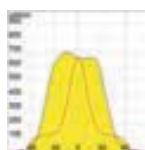
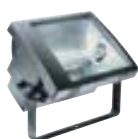
### UNWIRED VERSION



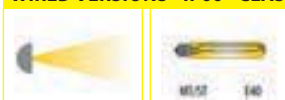
Code	Max lamp power	Lamp	Lamp holder	Lamp current	Colour	Weight (kg)	Pack Carton
GW 84 433	400 W	-	E40	-	Graphite grey	7.7	1

**ACCESSORIES SUPPLIED:** structural components: reflector, accessory-holding plate.  
Electrical components: lampholder with cables, supply terminal. The devices are supplied with standard service items.

GW84467



### WIRED VERSIONS - IP66 - CLASS I

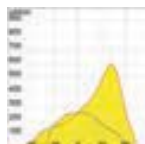
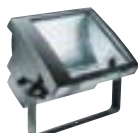


Code	Lamp power	Lamp	Lamp holder	Lamp current	Colour	Weight (kg)	Pack Carton
GW 84 467	600 W	ST	E40	6.2 A	Graphite grey	9	1
GW 84 468	1000 W	MT	E40	9.5 A	Graphite grey	9	1

NOTES: to be used with the relative supply unit.  
GW84468: use 1000W MT lamps with a maximum length of 345mm.

### ASYMMETRICAL DIFFUSED OPTICS

GW84491S



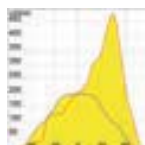
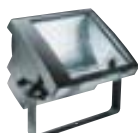
### WIRED VERSIONS WITH P.F. CORRECTION COMPLETE WITH LAMP - IP66 - CLASS I



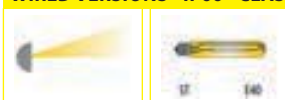
Code	Lamp power	Lamp supplied	Lamp holder	Lamp current	Colour	Weight (kg)	Pack Carton
<b>VOLTAGE: 230 V - 50 Hz</b>							
GW 84 491 S	250 W	ST	E40	3 A	Graphite grey	10.8	1
GW 84 491 M	250 W	MT	E40	3 A	Graphite grey	10.8	1
GW 84 495 M	250 W	MT*	E40	2.2 A	Graphite grey	10	1
GW 84 494 S	400 W	ST	E40	4.2 A	Graphite grey	12.2	1
GW 84 494 M	400 W	MT	E40	4.2 A	Graphite grey	12.2	1
GW 84 496 M	400 W	MT*	E40	3.4 A	Graphite grey	10.7	1
<b>VOLTAGE: 240 V - 50 Hz</b>							
GW 84 501 S	250 W	ST	E40	3 A	Graphite grey	10.8	1
GW 84 501 M	250 W	MT	E40	3 A	Graphite grey	10.8	1
GW 84 505 M	250 W	MT*	E40	2.2 A	Graphite grey	10	1
GW 84 504 S	400 W	ST	E40	4.2 A	Graphite grey	12.2	1
GW 84 504 M	400 W	MT	E40	4.2 A	Graphite grey	12.2	1
GW 84 506 M	400 W	MT*	E40	3.4 A	Graphite grey	10.7	1
<b>VOLTAGE: 220 V - 60 Hz</b>							
GW 84 511 S	250 W	ST	E40	3 A	Graphite grey	10.8	1
GW 84 511 M	250 W	MT	E40	3 A	Graphite grey	10.8	1
GW 84 515 M	250 W	MT*	E40	2.2 A	Graphite grey	10	1
GW 84 514 S	400 W	ST	E40	4.2 A	Graphite grey	12.2	1
GW 84 514 M	400 W	MT	E40	4.2 A	Graphite grey	12.2	1
GW 84 516 M	400 W	MT*	E40	3.4 A	Graphite grey	10.7	1

\* Lamp with striking voltage of 0.7 ÷ 1kV.

GW84497



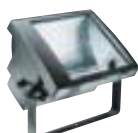
### WIRED VERSIONS - IP66 - CLASS I



Code	Lamp power	Lamp	Lamp holder	Lamp current	Colour	Weight (kg)	Pack Carton
GW 84 497	600 W	ST	E40	6.2 A	Graphite grey	9	1

NOTES: to be used with the relative supply unit.

GW84434



### UNWIRED VERSION



Code	Max lamp power	Lamp	Lamp holder	Lamp current	Colour	Weight (kg)	Pack Carton
GW 84 434	400 W	-	E40	-	Graphite grey	7.7	1

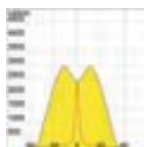
ACCESSORIES SUPPLIED: structural components: reflector, accessory-holding plate.  
Electrical components: lampholder with cables, supply terminal. The devices are supplied with standard service items.

# TITANO RANGE

MEDIUM AND HIGH POWER SYMMETRICAL AND ASYMMETRICAL FLOODLIGHTS

TITANO RANGE

GW84520S



## WIRED VERSIONS WITH P.F. CORRECTION COMPLETE WITH LAMP - IP66 - CLASS I

Code	Lamp power	Lamp supplied	Lamp holder	Lamp current	Colour	Weight (kg)	Pack Carton
<b>VOLTAGE: 230 V - 50 Hz</b>							
GW 84 520 S	250 W	ST	E40	3 A	Graphite grey	10.8	1
GW 84 520 M	250 W	MT	E40	3 A	Graphite grey	10.8	1
GW 84 521 M	250 W	MT*	E40	2.2 A	Graphite grey	10	1
GW 84 522 S	400 W	ST	E40	4.2 A	Graphite grey	12.2	1
GW 84 522 M	400 W	MT	E40	4.2 A	Graphite grey	12.2	1
GW 84 523 M	400 W	MT*	E40	3.4 A	Graphite grey	10.7	1
<b>VOLTAGE: 240 V - 50 Hz</b>							
GW 84 530 S	250 W	ST	E40	3 A	Graphite grey	10.8	1
GW 84 530 M	250 W	MT	E40	3 A	Graphite grey	10.8	1
GW 84 531 M	250 W	MT*	E40	2.2 A	Graphite grey	10	1
GW 84 532 S	400 W	ST	E40	4.2 A	Graphite grey	12.2	1
GW 84 532 M	400 W	MT	E40	4.2 A	Graphite grey	12.2	1
GW 84 533 M	400 W	MT*	E40	3.4 A	Graphite grey	10.7	1
<b>VOLTAGE: 220 V - 60 Hz</b>							
GW 84 540 S	250 W	ST	E40	3 A	Graphite grey	10.8	1
GW 84 540 M	250 W	MT	E40	3 A	Graphite grey	10.8	1
GW 84 541 M	250 W	MT*	E40	2.2 A	Graphite grey	10	1
GW 84 542 S	400 W	ST	E40	4.2 A	Graphite grey	12.2	1
GW 84 542 M	400 W	MT	E40	4.2 A	Graphite grey	12.2	1
GW 84 543 M	400 W	MT*	E40	3.4 A	Graphite grey	10.7	1

\* Lamp with striking voltage of 0.7 ÷ 1kV.

GW84435



## UNWIRED VERSION

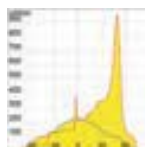
Code	Max lamp power	Lamp	Lamp holder	Lamp current	Colour	Weight (kg)	Pack Carton
GW 84 435	400 W	-	E40	-	Graphite grey	7.7	1

ACCESSORIES SUPPLIED: structural components: reflector, accessory-holding plate.

Electrical components: lampholder with cables, supply terminal. The devices are supplied with standard service items.

### ASYMMETRICAL RESTRICTED BEAM OPTICS

GW84551S



#### WIRED VERSIONS WITH P.F. CORRECTION COMPLETE WITH LAMP - IP66 - CLASS I

Code	Lamp power	Lamp supplied	Lamp holder	Lamp current	Colour	Weight (kg)	Pack Carton
<b>VOLTAGE: 230 V - 50 Hz</b>							
GW 84 551 S	250 W	ST	E40	3 A	Graphite grey	10.8	1
GW 84 551 M	250 W	MT	E40	3 A	Graphite grey	10.8	1
GW 84 552 M	250 W	MT*	E40	2.2 A	Graphite grey	10	1
GW 84 553 S	400 W	ST	E40	4.2 A	Graphite grey	12.2	1
GW 84 553 M	400 W	MT	E40	4.2 A	Graphite grey	12.2	1
GW 84 554 M	400 W	MT*	E40	3.4 A	Graphite grey	10.7	1
<b>VOLTAGE: 240 V - 50 Hz</b>							
GW 84 561 S	250 W	ST	E40	3 A	Graphite grey	10.8	1
GW 84 561 M	250 W	MT	E40	3 A	Graphite grey	10.8	1
GW 84 562 M	250 W	MT*	E40	2.2 A	Graphite grey	10	1
GW 84 563 S	400 W	ST	E40	4.2 A	Graphite grey	12.2	1
GW 84 563 M	400 W	MT	E40	4.2 A	Graphite grey	12.2	1
GW 84 564 M	400 W	MT*	E40	3.4 A	Graphite grey	10.7	1
<b>VOLTAGE: 220 V - 60 Hz</b>							
GW 84 571 S	250 W	ST	E40	3 A	Graphite grey	10.8	1
GW 84 571 M	250 W	ST	E40	3 A	Graphite grey	10.8	1
GW 84 572 M	250 W	MT*	E40	2.2 A	Graphite grey	10	1
GW 84 573 S	400 W	ST	E40	4.2 A	Graphite grey	12.2	1
GW 84 573 M	400 W	MT	E40	4.2 A	Graphite grey	12.2	1
GW 84 574 M	400 W	MT*	E40	3.4 A	Graphite grey	10.7	1

\* Lamp with striking voltage of 0.7 ÷ 1kV.

GW84436



#### UNWIRED VERSION



Code	Max lamp power	Lamp	Lamp holder	Lamp current	Colour	Weight (kg)	Pack Carton
GW 84 436	400 W	-	E40	-	Graphite grey	7.7	1

ACCESSORIES SUPPLIED: structural components: reflector, accessory-holding plate.

Electrical components: lampholder with cables, supply terminal. The devices are supplied with standard service items.

TITANO RANGE

# TITANO RANGE

MEDIUM AND HIGH POWER SYMMETRICAL AND ASYMMETRICAL FLOODLIGHTS

TITANO RANGE

## COMPLEMENTARY ITEMS



### OPTICAL COMPONENTS

Code	Description	Colour	Dimensions (mm)	Weight (kg)	Pack Carton
GW 84 407	Protective wire guard		310x270	0.2	1/5
GW 84 408	Anti-glare louvre	Graphite grey	300x270	0.9	1/5

GW84783



### OPTIC AIMING DEVICE

Code	Material	Pack Carton
GW 84 783	Galvanised steel	1

GW84611



### SUPPLY UNIT - IP66 - CLASS I

Code	Lamp power	Lamp	Lamp current	Voltage	Weight (kg)	Pack Carton
GW 84 611	600 W	ST	6.2 A	230 V - 50 Hz	10.6	1
GW 84 612	600 W	ST	6.2 A	240 V - 50 Hz	10.6	1
GW 84 613	600 W	ST	6.2 A	220 V - 60 Hz	10.6	1
GW 84 616	1000 W	MT/MN/ST	9.5 - 10.3 A	230 V - 50 Hz	13.7	1
GW 84 617	1000 W	MT/MN/ST	9.5 - 10.3 A	240 V - 50 Hz	13.7	1
GW 84 618	1000 W	MT/MN/ST	9.5 - 10.3 A	220 V - 60 Hz	13.7	1

GW84637



### SUPPLY UNIT - IP20 - CLASS I

Code	Lamp power	Lamp	Lamp current	Voltage	Weight (kg)	Pack Carton
GW 84 636	600 W	ST	6.2 A	230 V - 50 Hz	8.4	1
GW 84 637	1000 W	MT/MN/ST	9.5 - 10.3 A	230 V - 50 Hz	11.5	1

GW88284



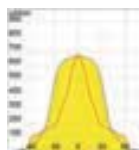
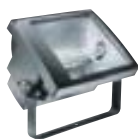
### SPARE PARTS

Code	Description	Type	Dimensions (mm)	Weight (kg)	Pack Carton
GW 88 284	Tempered transparent glass	For frame with slots or hooks	390x307x5	1.4	1/5
GW 88 260	Tempered transparent glass	For frame Without slots	390x301x5	1.4	1/5

## ATEX VERSION - ZONE 2 (G) - ZONE 22 (D)

### SYMMETRICAL DIFFUSED OPTICS

GW84581S



#### WIRED VERSIONS WITH P.F. CORRECTION COMPLETE WITH LAMP - IP66 - CLASS I



Code	Lamp power	Lamp supplied	Lamp holder	Lamp current	Colour	Weight (kg)	Pack Carton
<b>VOLTAGE: 230 V - 50 Hz</b>							
GW 84 581 S	250 W	ST	E40	3 A	Graphite grey	10.8	1
GW 84 581 M	250 W	MT	E40	3 A	Graphite grey	10.8	1
GW 84 582 M	250 W	MT*	E40	2.2 A	Graphite grey	10	1
GW 84 583 S	400 W	ST	E40	4.2 A	Graphite grey	12.2	1
GW 84 583 M	400 W	MT	E40	4.2 A	Graphite grey	12.2	1
GW 84 584 M	400 W	MT*	E40	3.4 A	Graphite grey	10.7	1

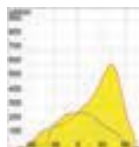
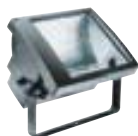
\* Lamp with striking voltage of 0.7 ÷ 1kV.

#### ATEX VERSIONS CLASSIFICATION:

Version 250 W MT/ST: II 3GD - Ex nA IICT1 Gc - Ex tc IIIC T200 °C Dc -20 °C ≤ Ta ≤ +25 °C X;  
 Version 250 W MT 1 kV: II 3GD - Ex nA IIC 520 °C Gc - Ex tc IIIC T210 °C Dc -20 °C ≤ Ta ≤ +25 °C X;  
 Version 400 W MT/ST: II 3GD - Ex nA IIC 495 °C Gc - Ex tc IIIC T200 °C Dc -20 °C ≤ Ta ≤ +25 °C X;  
 Version 400 W MT 1 kV: II 3GD - Ex nA IIC 520 °C Gc - Ex tc IIIC T210 °C Dc -20 °C ≤ Ta ≤ +25 °C X.

### ASYMMETRICAL DIFFUSED OPTICS

GW84591S



#### WIRED VERSIONS WITH P.F. CORRECTION COMPLETE WITH LAMP - IP66 - CLASS I



Code	Lamp power	Lamp supplied	Lamp holder	Lamp current	Colour	Weight (kg)	Pack Carton
<b>VOLTAGE: 230 V - 50 Hz</b>							
GW 84 591 S	250 W	ST	E40	3 A	Graphite grey	10.8	1
GW 84 591 M	250 W	MT	E40	3 A	Graphite grey	10.8	1
GW 84 592 M	250 W	MT*	E40	2.2 A	Graphite grey	10	1
GW 84 593 S	400 W	ST	E40	4.2 A	Graphite grey	12.2	1
GW 84 593 M	400 W	MT	E40	4.2 A	Graphite grey	12.2	1
GW 84 594 M	400 W	MT*	E40	3.4 A	Graphite grey	10.7	1

\* Lamp with striking voltage of 0.7 ÷ 1kV.

#### ATEX VERSIONS CLASSIFICATION:

Version 250 W MT/ST: II 3GD - Ex nA IICT1 Gc - Ex tc IIIC T200 °C Dc -20 °C ≤ Ta ≤ +25 °C X;  
 Version 250 W MT 1 kV: II 3GD - Ex nA IIC 520 °C Gc - Ex tc IIIC T210 °C Dc -20 °C ≤ Ta ≤ +25 °C X;  
 Version 400 W MT/ST: II 3GD - Ex nA IIC 495 °C Gc - Ex tc IIIC T200 °C Dc -20 °C ≤ Ta ≤ +25 °C X;  
 Version 400 W MT 1 kV: II 3GD - Ex nA IIC 520 °C Gc - Ex tc IIIC T210 °C Dc -20 °C ≤ Ta ≤ +25 °C X.