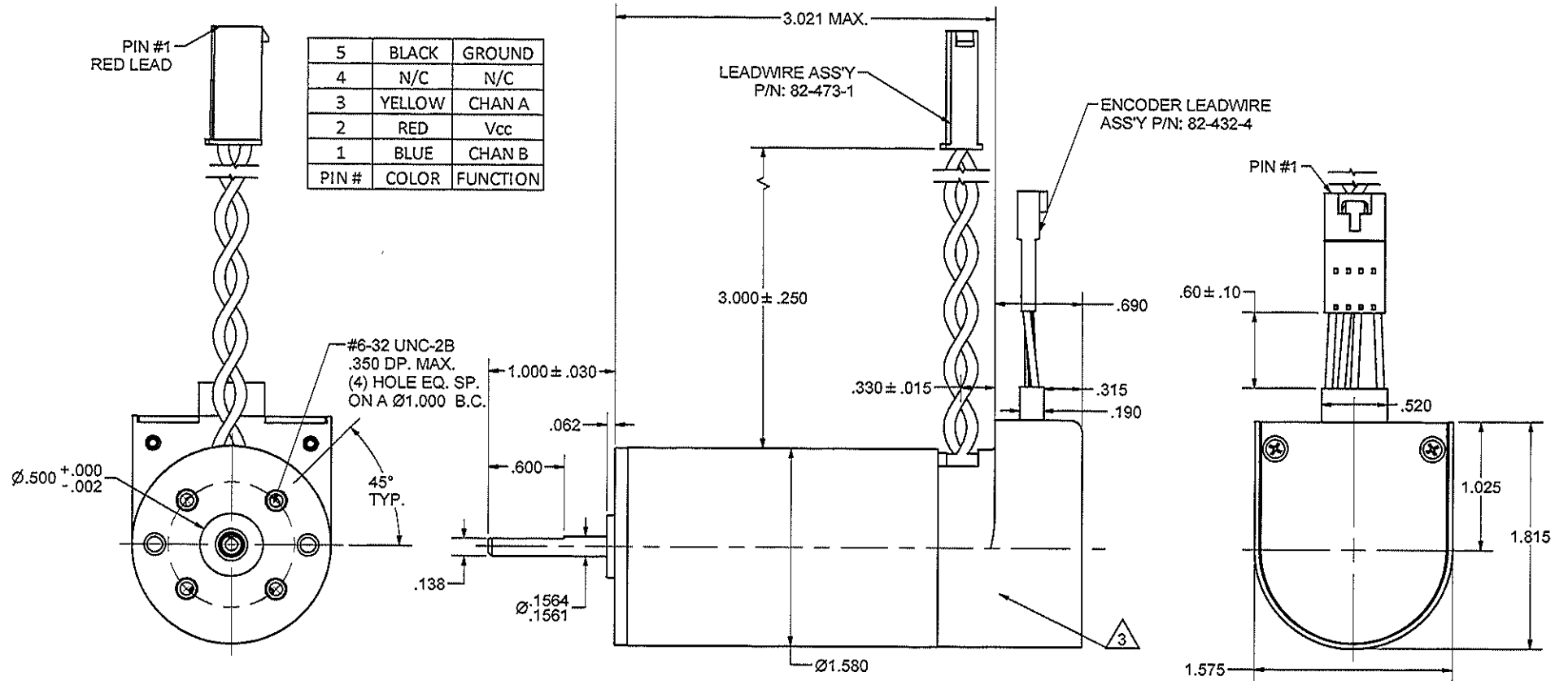


NOTICE: CONFIDENTIAL PROPRIETARY INFORMATION, THIS PRINT CONTAINS IDEAS, INFORMATION, AND INTELLECTUAL PROPERTY WHICH ARE THE EXCLUSIVE PROPERTY OF PITTMAN, DIVISION OF AMETEK TECHNICAL & INDUSTRIAL PRODUCTS. RECIPIENT MUST KEEP THE INFORMATION DISCLOSED HEREIN CONFIDENTIAL AND RECIPIENT IS EXPRESSLY PROHIBITED FROM COPYING OR PUBLICATION OF THIS PRINT EXCEPT TO OTHERS IN THEIR ORGANIZATION ON A NEED TO KNOW BASIS.

LTR	DESCRIPTION	DRFT/ENG	DATE	APP
C	ECO #104628	TMG/TMG	11/14/12	JRM



- NOTE:
- SHAFT ROTATION IS CW WHILE VIEWING MOUNTING END WITH POSITIVE (+) VOLTAGE APPLIED TO THE RED MOTOR LEAD, PIN #1.
 - MOTOR CONTAINS BALL BEARINGS PRELOADED PER P-107.
 - MOTOR CONTAINS A HEDM-9100 OPTICAL ENCODER MODULE, AND PITTMAN CODE WHEEL P/N: 56-114-2. LINE COUNT IS 1000.
 - MOTOR CONTAINS FIXED 16-33K BALL BEARINGS ON BOTH THE MOUNTING END AND THE BRUSH END.
 - MOTOR MUST BE RUN IN AT 18 VDC, FOR 6 HOURS REVERSING EVERY MINUTE.
 - ALL MATERIALS, PROCESSES AND PACKAGING MUST BE COMPLIANT WITH AMETEK ENVIRONMENTAL SPECIFICATION ES0010.

UNLESS OTHERWISE SPECIFIED DIMENSIONS ARE IN INCHES TOLERANCES ARE:		
FRACTION	DECIMAL	ANGLES
$\frac{1}{16}$	$\pm .015$	$\pm 1^\circ$
X	$\pm .010$	
JXX	$\pm .010$	
XXX	$\pm .005$	
BREAK ALL SHARP EDGES		
DRAFTER	DATE	
TMG	5/11/2012	
ENGINEER	DATE	
TMG	5/11/2012	
APPROVED	DATE	
JR MELA	5/11/2012	
MATERIAL		
FINISH		
FILE		

TECHNICAL & INDUSTRIAL PRODUCTS www.ametektip.com Harleysville, PA U.S.A. www.pittmanet.com	
TITLE	
OUTLINE AND MOUNTING DIMENSIONS FOR IOLINE	
SIZE	REV
B	C
DWG NO	
9236E879-R1	
SHEET 1 OF 1	