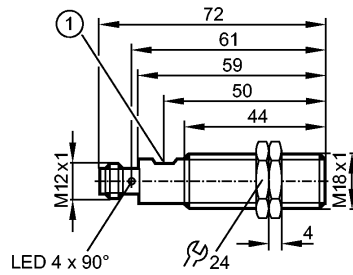


OGH200

OGH-HPKG/US100

Photoelectric sensors



1: potentiometer

Made in Germany



Product characteristics

Diffuse reflection sensor

Threaded type

M18 x 1

Connector

Background suppression

potentiometer

Range 15...250mm (Range referred to white paper 200 x 200 mm, 90 % remission)

adjustable

Electrical data

Electrical design

DC PNP

Operating voltage [V]

10...36 DC

Current consumption [mA]

25

Type of light

Red light 624 nm

Protection class

II

Reverse polarity protection

yes

Outputs

Output function

light-on mode

Voltage drop [V]

< 2.5

Current rating [mA]

200

Short-circuit protection

pulsed

Overload protection

yes

Switching frequency [Hz]

1000

Range

Range [mm]

Range [mm]

15...250 (Range referred to white paper 200 x 200 mm, 90 % remission)

- Object white (90 % remission)

15...250

- Object grey (18 % remission)

15...230

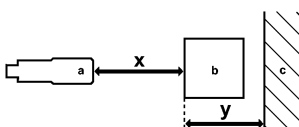
- Object black (6 % remission)

15...160

Light spot diameter [mm]

21 (at maximum range)

Accuracy graph



a: sensor

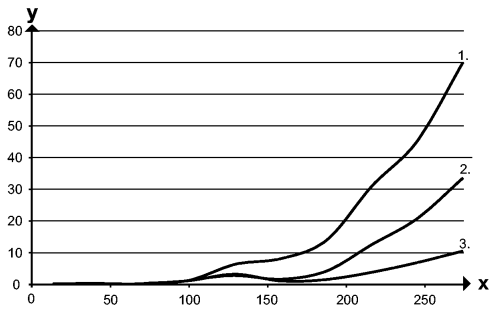
b: object

OGH200

OGH-HPKG/US100

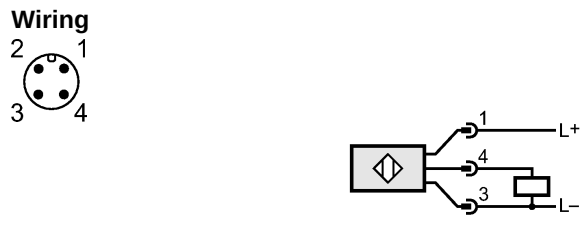
Photoelectric sensors

c: background
 x: distance sensor / object
 y: min. distance object / background



Values in [mm]

- 1 = object black (6 % remission), background white (90 % remission)
- 2 = object grey (18 % remission), background white (90 % remission)
- 3 = object white (90 % remission), background white (90 % remission)

Environment	
Ambient temperature [°C]	-25...60
Protection	IP 65
Tests / approvals	
EMC	EN 60947-5-2
MTTF [Years]	339
Mechanical data	
Housing materials	housing: high-grade stainless steel; operator interface: TPE
Lens material	PMMA
Weight [kg]	0.054
Displays / operating elements	
Output status indication LED	yellow
Electrical connection	
Connection	M12 connector
Wiring	
	
Accessories	
Accessories (included)	2 lock nuts
Remarks	
Remarks	cULus - Class 2 source required
Pack quantity [piece]	1