



January 2015

**Important notification of change with regard to the pressure transmitters with 4-20 mA output signal, type PT4X4, MDT46XF, TPT46X4, TDT46XF**

Starting with January 2015, all the pressure transmitters with 4-20 mA output signal and suffix -A (e.g. MDT462F-1 / 2-3.5C-15/46-A), which means calibration by push button and remote auto-zero are replaced with the new transmitters with SIL2 suffix. These new transmitters are fully compatible with older transmitters with or without suffix A.

The changes are as follows:

- Calibration potentiometers are located on the side of the electronic box.
- Remote Auto-zero shunt between terminals D and F is provided.
- All transmitters are compatible with the level of performance Pl'c' according to the directive EN ISO 13849-1 and SIL2, including models without a built-in safety relay (6-pin).
- The transmitters are also available with a safety relay Pl'c option GC'x ' (8 pin).

**Examples :**

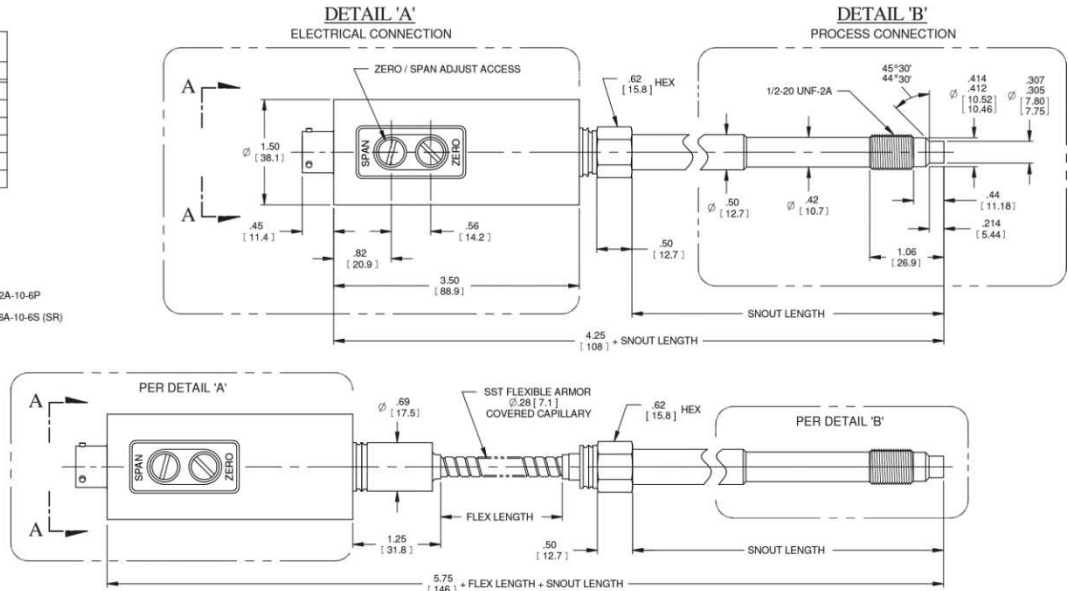
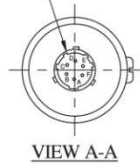
MDT462F-1/2-3 .5C-15/46-A	would cross to MDT462F-1/2-3 .5C-15/46-SIL2
MDT462F-1/2-3 .5C-15/46	would cross to MDT462F-1/2-3 .5C-15/46-SIL2
PT4624-5M-6/18-A	would cross to PT4624-5M-6/18-SIL2
PT4624-5M-6/18	would cross to PT4624-5M-6/18-SIL2

### 6 PIN MDT F, PT 46X4 with bayonet connection

CONNECTOR WIRING	
PIN	FUNCTION
A	SIGNAL + / EXCITATION +
B	SIGNAL - / EXCITATION -
C	NO CONNECTION
D	REZERO +
E	RCAL +
F	RCAL - / REZERO -

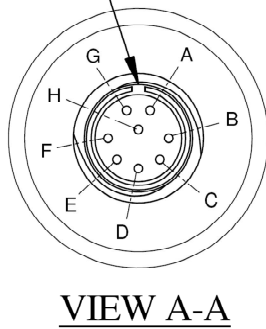
ZERO AND SPAN ADJUST ACCESS PROTECTED BY SEAL SCREWS

BENDIX CONNECTOR PT02A-10-6P OR EQUIVALENT  
MATING CONNECTOR PT06A-10-6S (SR) OR EQUIVALENT



### 8 pin with relay option – MDT F, PT 46X4 with screwed connection (Guardian-GC x)

ALIGNMENT KEYWAY



CONNECTOR WIRING 4-20mA	
PIN	FUNCTION
A	POWER +
B	SIGNAL -
C	POWER -
D	REZERO +
E	RCAL +
F	RCAL - / REZERO -
G	RELAY CONTACT
H	RELAY CONTACT