

# Specifications

---

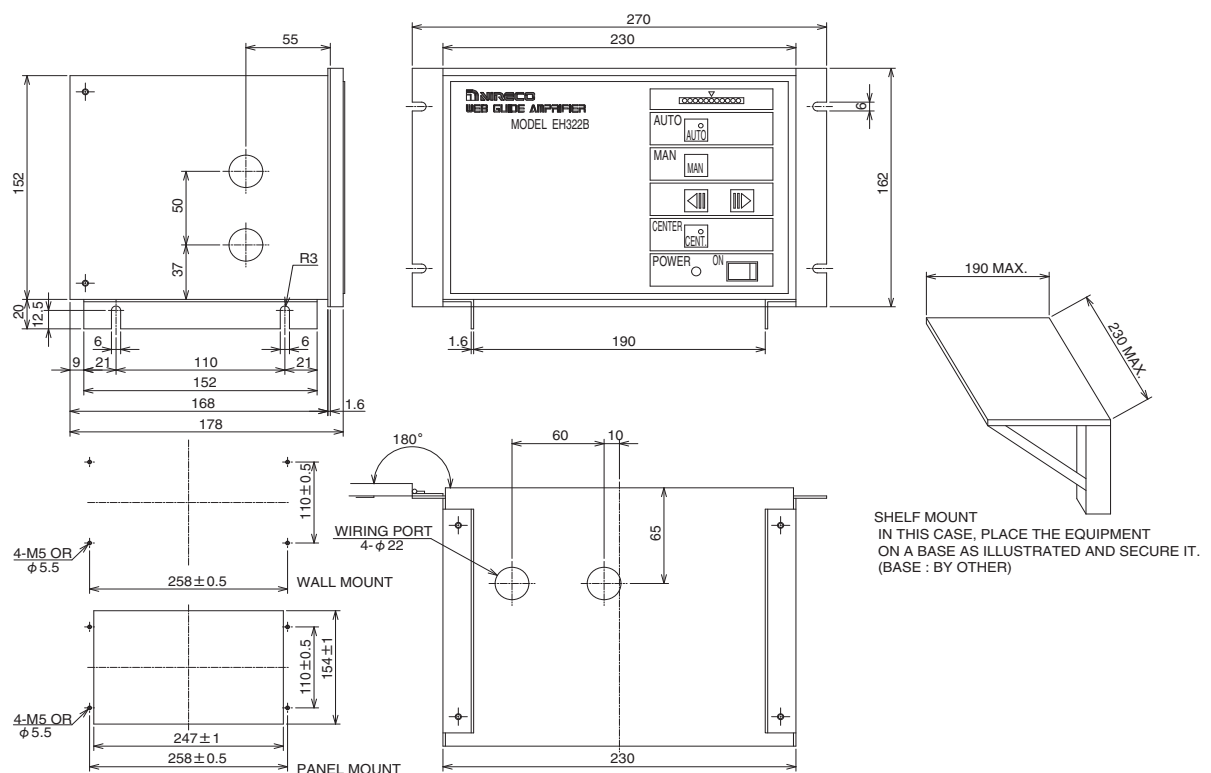
Power supply voltage	100 to 240V AC $\pm 10\%$ , 50/60Hz, continuous supply
Power consumption	100VA
Ambient temperature	0 to +50°C
Ambient humidity	35 to 85%RH or less (noncondensing)
Input	<p>(1) Sensor</p> <p>Photohead : PH16B, PH21, PH23, PH30, PH31 (silicon photo diode)</p> <p>Pneumo-electric converter : SN12G/SN15 (differential transformer)</p> <p>Ultrasonic sensor : UH01 (0 to 200mV DC)</p> <p>(2) Centering sensor : KL1632.0-90P</p> <p>(3) Fine adjuster : 2k<math>\Omega</math> (0.1W or more) variable resistor</p> <p>(4) Position transmitter : 2k<math>\Omega</math> (0.1W or more) variable resistor</p> <p>(5) Remote control unit : RP22 AUTO/MAN/CENT, manual operation, fine adjustment</p>
Output	<p>(1) Electro-hydraulic controller -200 to +200mA DC (<math>\pm 250</math>mA DC max.) (load 20<math>\Omega</math>, moving coil)</p> <p>(2) Dither 4 Vp-p (standard), 50/100Hz rectangular wave</p>

## Specifications

---

Output	(3) Lamp power supply 4.5 to 12V DC variable (10W)  (4) Solenoid valve Same as the power voltage supply (Note that the standard solenoid valve voltage for the Servoguide MK-IV. M is to be either 200V AC (50 Hz / 60 Hz) or 220V AC (60 Hz).)
Mass	4.2kg
Mounting	Shelf, wall or panel mounting

# External Dimensions



**Figure 12.1** Web guide amplifier EH322B (Dwg. No. MK0003280-EA)