

EtherCAT[®]-Compatible Products

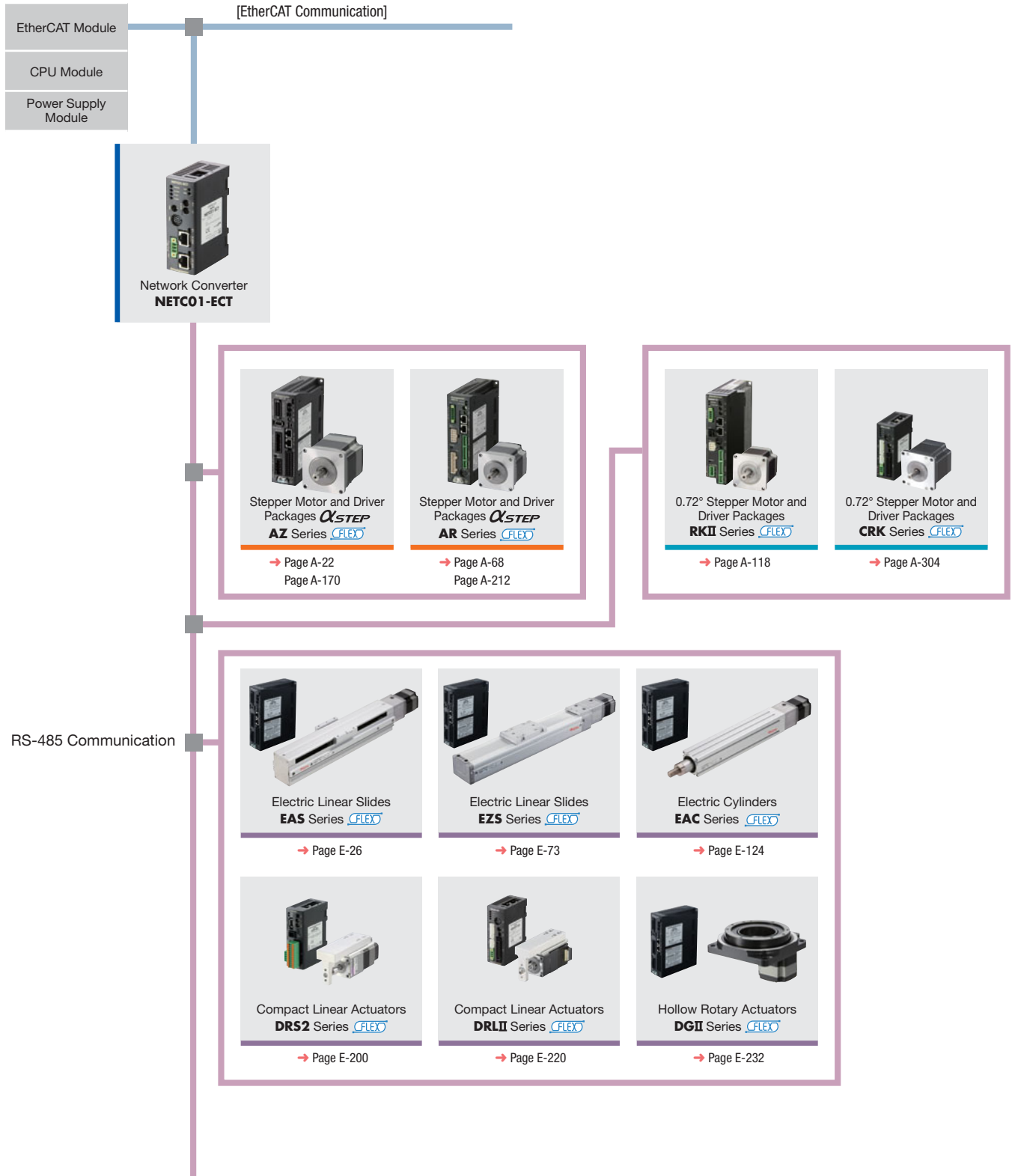
Products that can be connected to EtherCAT communication through the use of a network converter are arranged.

αSTEP

0.72° Stepper Motors

Linear & Rotary Actuators

● EtherCAT Communication



Modbus (RTU)-Compatible Products

Shown below are the features of the open field network Modbus.

- Up to 31 axes can be connected to a single programmable controller (master equipment)
- Simultaneous start for multiple axes by the group send function is possible
- PC can control the motor
- Maintenance from the touch screen is possible

αSTEP

0.72° Stepper Motors

Linear & Rotary Actuators

Network-
Compatible
Products
Overview

EtherCAT

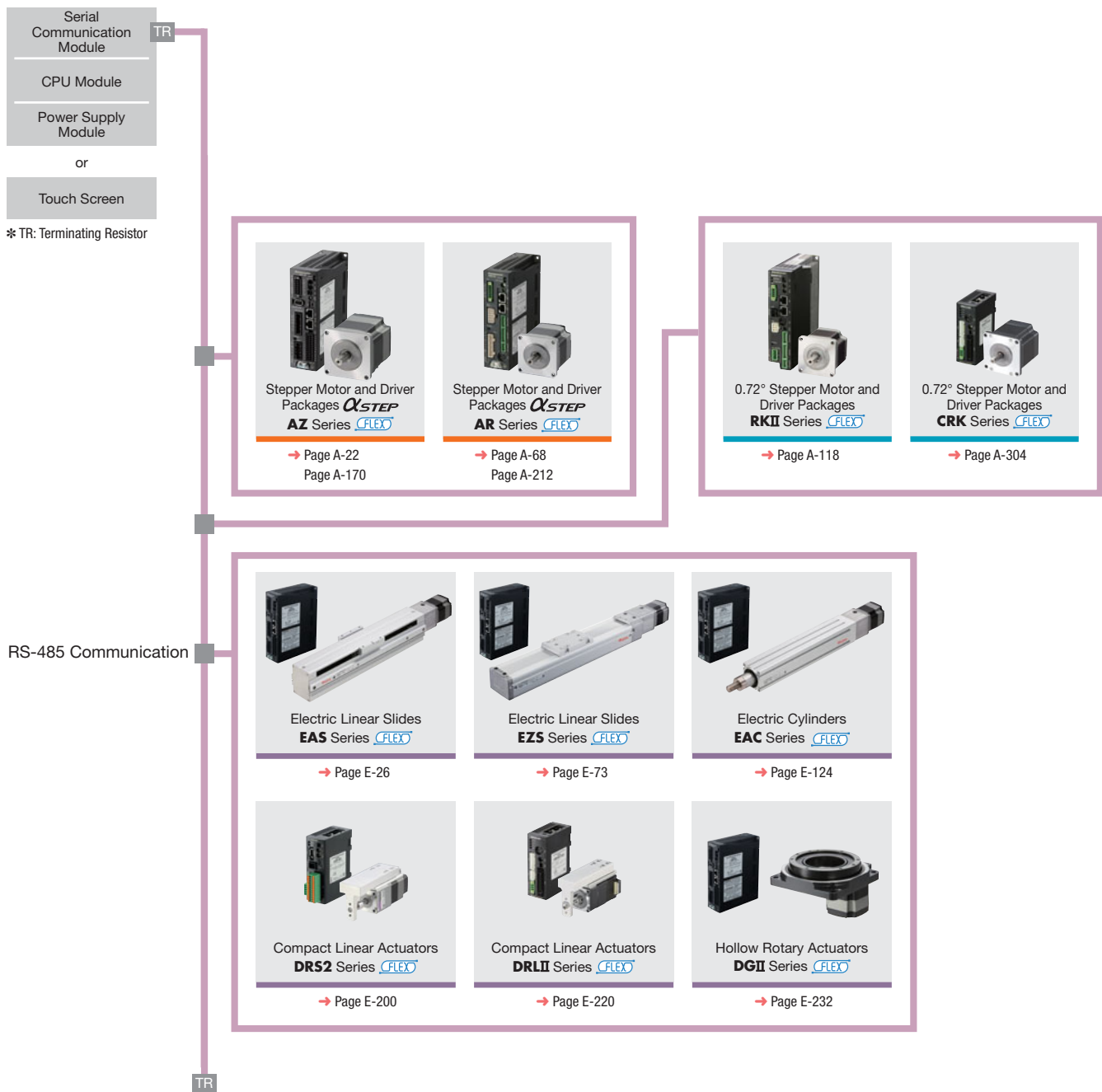
ModBUS
(RTU)

CC-LINK,
MECHATROLINK

Network
Converters

Controller
Overview

SCX11



* TR: Terminating Resistor

RS-485 Communication

CC-Link-Compatible Products

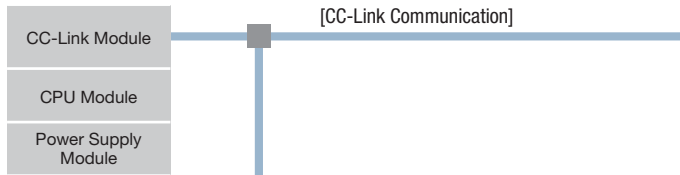
Products that can be connected to CC-Link communication through the use of a network converter are arranged.



0.72° Stepper Motors

Linear & Rotary Actuators

● CC-Link Communication



Network Converter
NETC01-CC
Ver. 1.1 Compatible

Network Converter
NETC02-CC
Ver. 2 Compatible

This product is a type of remote device station equipment that supports CC-Link Ver.2*1. Compared with CC-Link Ver. 1.1, the amount of data that can be handled is greatly increased. Ver. 2 enables an extended cyclic transmission*2, and is also able to send multiple data at a time. Simplification of the ladder program and a time reduction for data transmissions can be expected.

*1 Ver. 1.1 is not available.
*2 This is periodic communication that enables the transmission of up to 128 points of bit data per station and up to 64 points of word data by dividing data transmissions.

Stepper Motor and Driver Packages **ALPHA STEP**
AZ Series

→ Page A-22
Page A-170

Stepper Motor and Driver Packages **ALPHA STEP**
AR Series

→ Page A-68
Page A-212

0.72° Stepper Motor and Driver Packages **ALPHA STEP**
RKII Series

→ Page A-118

0.72° Stepper Motor and Driver Packages **ALPHA STEP**
CRK Series

→ Page A-304

RS-485 Communication

Electric Linear Slides **ALPHA STEP**
EAS Series

→ Page E-26

Electric Linear Slides **ALPHA STEP**
EZS Series

→ Page E-73

Electric Cylinders **ALPHA STEP**
EAC Series

→ Page E-124

Compact Linear Actuators **ALPHA STEP**
DRS2 Series

→ Page E-200

Compact Linear Actuators **ALPHA STEP**
DR11 Series

→ Page E-220

Hollow Rotary Actuators **ALPHA STEP**
DG11 Series

→ Page E-232

MECHATROLINK-Compatible Products

Products that can be connected to MECHATROLINK-II and MECHATROLINK-III communication through the use of a network converter are arranged.

αSTEP

0.72° Stepper Motors

Linear & Rotary Actuators

Network-
Compatible
Products
Overview

EtherCAT

ModBUS
(RTU)

CC-LINK,
MECHATROLINK

Network
Converters

Controller
Overview

SCX11

MECHATROLINK Communication

