



Smartview

LCD Display

The Smartview CANopen Display is an extension of Sevcon's range of dashboard mounted display products for battery powered vehicles. This compact LCD gauge is fully compatible with any of the Sevcon CAN-based controllers.

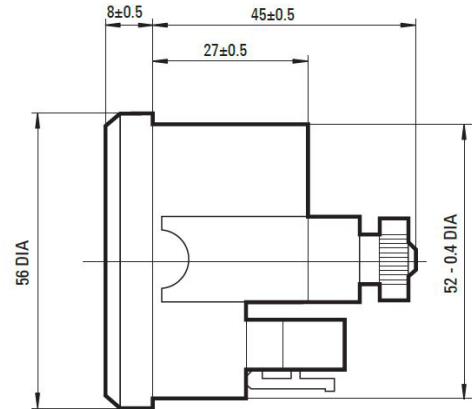
Features

- Specifically designed with a sharp display for ease of reading
- Battery state of charge through a 10-segment BDI bar graph
- Programmable warning, cutout, empty and full levels
- Hour count can be configured to show traction, pump or key-switch hours via clear icons
- Intelligent fault indication to aid troubleshooting
- Ability to manage planned vehicle maintenance via a pre-alarm and using two user configurable tool icons
- Powered from the CAN bus thus eliminating unnecessary wiring
- Optional backlit version
- IP65 Rating



Key Parameters

- Display type: Liquid Crystal Display (LCD)
- Numeral size: 5mm
- Viewing angle: 180 degrees
- Housing: Plastic bevelled black chrome-plated bezel and glass front
- Mounting: U clamp with plastic nuts
- Panel thickness: 0.5 to 7.0mm
- Back lit illumination: Optional, remotely controlled



Electrical

- Operating voltage: 10VDC to 14VDC reverse polarity protected
- Current consumption: 20mA max, <100mA with backlit option
- Communication interface: CAN 2.0B passive up to 500k
- Input pin protection: Protected against connection to 60V and supply
- Protection against transients: +/- 250V for 20µs with 10ms repeat on each input

Hourmeter Value

99 999.99 h

- 6 digits, display accuracy 1/10 h
- Specific icons for Key Switch, Traction or Pump motor corresponding counts and "h" symbol

Environmental

- Ambient temperature: -30C to +50C
- Storage temperature: -40C to +85C
- Vibration / Shock: SAEJ 1378
- Degree of protection (front): IP65

Battery State of Charge

- 10 segment LCD bar graph
- Battery discharge algorithm programmable through the Sevcon controller software

Wiring

- Pin 1 = NC
- Pin 2 = supply -
- Pin 3 = backlight+
- Pin 4 = supply +
- Pin 5 = CAN_H
- Pin 6 = CAN_L

