

NH fuse switch-disconnector size 2, 400 A, bus-mounting, connection top/bottom (33602)



Description

Article

Part No.: 33602

QUADRON® 60Classic

NH fuse switch-disconnector size 2, 400 A, bus-mounting, connection top/bottom

connection screw M10

for busbars 12, 15, 20, 25, 30 x 10 and section busbars

System

60Classic

Product group 09

Subgroup 30

pack size 1

EAN 4021267336028

Advantages of the product

Disconnectors are equipped with arc chambers.

The shock protection is split into 2 for safe connection of the conductors.

Self-closing inspection holes are available in the cover.

Catalog page 2015 : 2/29

eCl@ss 6.1 27142108

eCl@ss 7.1 27142108

ETIM 4.0 EC001040

ETIM 5.0 EC001040

Approvals

Standards

IEC 60947-1:2007 + A1:2010 + A2:2014

IEC 60947-3:2008 + A1:2012

Approvals

IEC (CB), UL, Germanischer Lloyd, KEMA, CCC



for UL feeder circuits >250V

Type number: LTS-2

UL file: E230163, UL category (for USA): IZLT2 <http://www.ul.com>

CCC certificate: 2004010302117262

Product data

Electrical data

Rated current (IEC): 400 A

Rated voltage (IEC) AC: 690 V

Rated voltage (IEC) DC: 440 V

Rated current (UL): 400 A

Rated voltage (UL) AC: 600 V

Utilisation category AC-23B (400V)
AC (IEC 60947-3) : AC-22B (690V)
AC-21B (690V)
AC-20B (1000V) at pollution degree 2

visible information required if used at more than 690V AC: do not switch under load

Utilisation category DC specifications: 2 current paths (L1,L3) in series
DC (IEC 60947-3) : DC-22B (440 V)
DC-21B (440 V)
DC-20B (1000V) at pollution degree 2

visible information required if used at more than 440V DC: do not switch under load

Power dissipation:

The power dissipation at a typical load of 80% of the rated current results to 28.8 W.
(The power dissipation for operation with rated current would be 45 W.)

rated isolation voltage U_i (AC): 800
V
Rated surge voltage U_{imp} : 6 kV
max. permitted voltage (IEC) AC: 800
V
max. permitted voltage (IEC) DC: 800
V

rated peak withstand current I_{pk} : 27.2 kA
cond. rated short-circuit current with fuses: 50 kA / 690V
approved with fuse links of characteristics: gG
rated short-time withstand current I_{CW} : 13,2kA / 1s

SCCR: 100 kA

for fuse links IEC 60269-2-1 (I) / DIN VDE 0636-201 size 2 up to 34W power dissipation

Special operating conditions corresponding to IEC / EN 61439-1 may yield to faulty activations of pilot switches and fuse monitors. The operating conditions have to be considered for the analysis of status signals.

Entsprechend den angegebenen AC- und DC- Schalteigenschaften und unter Berücksichtigung der Überlastbedingungen, sind gewisse Abstände zu geerdeten Metallteilen einzuhalten. Nähere Informationen auf Anfrage.

Bei Verwendung als Trennschalter ist die Einhaltung der Abstände nicht erforderlich

Degree of protection IP30 at front, degree of protection near terminal depends on installation

Mechanical data

W x H x D: 210 x 288 x 145

Weight: 522 kg/100

Poles: 3-pole

for busbars: 12, 15, 20, 25, 30 x 10 and section busbars

front degree of protection: IP30

Type of fastening: patented click mechanism

Terminal points

screw M10 :

Md 30 - 35 Nm

Accessories:

Clamp connection: Cu 120-240mm² s(r), f+AE; la. Cu 21x1-14; 6-8Nm torque

single wedge clamp terminal: Cu, Al* 50-150/120-240mm² s(r), s(s), f, f+AE; 6-8Nm torque

double wedge clamp terminal: Cu 2x 70-120mm² s(r), s(s), f+AE; 6-8Nm torque

*Connections are not maintenance-free if aluminium conductors are used.

Material properties

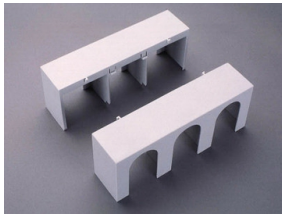
Main body:	temperature stability 125°C, self-extinguishing in acc. to UL 94, creepage resistance CTI 200, halogen-free
Shock protection cover:	temperature stability 125°C, self-extinguishing in acc. to UL 94, creepage resistance CTI 600, halogen-free
Handle:	temperature stability 125°C, self-extinguishing in acc. to UL 94, creepage resistance CTI 200, halogen-free
Adapter plate:	temperature stability 125°C, self-extinguishing in acc. to UL 94, creepage resistance CTI 200, halogen-free
Contacts:	spring-loaded copper contacts, silver plated
Connecting screws:	screw M10, galvanized, chromized

Version

Variant with electronic fuse monitoring: 33 326

Variant with electromechanical fuse monitoring: 33 161

Accessories



33143

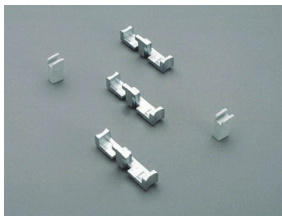
cover for cable lugs, top/bottom attachable
for NH fuse switch disconnecter size 2



wöhner

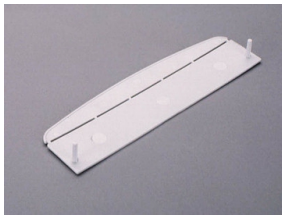
33146

prism terminal, double, for Cu cables
2x 70 - 120 mm²
size 2



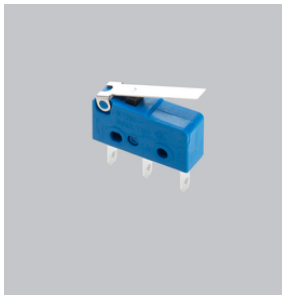
33148

reduction pieces
for 5mm busbars
size 2



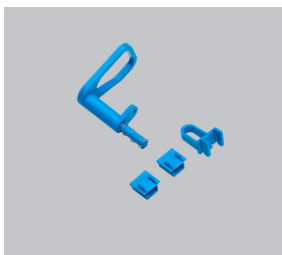
33155

barrier for handle for NH fuse-switch disconnecter size 1-3
for closing of handle area from rear



33156

pilot switch
changeover 250 V AC / 5 A; 30 V DC / 4 A
Size 1 - 3



33157

lid interlock
for sealing wire or 3 padlocks with shackle of 4-7 mm
Size 1 - 3

wöhner

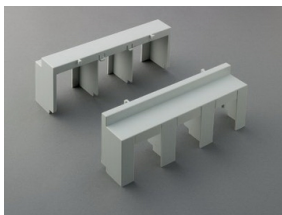
33164

clamp connector for Cu cables
120 - 240 mm²
size 2



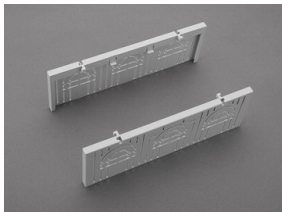
33167

prism terminal, single, for Cu and Al cables
50 - 240 mm²



33316

trim cover, 2 parts
for NH-LTS size 2
size 2



33418

connection shroud
for NH fuse switch-disconnector size 2