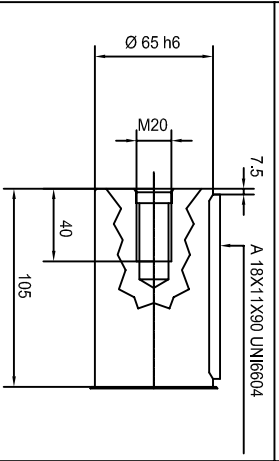


VIEW FROM A - VIEW FROM B

OUTPUT SHAFT



TECHNICAL DATA

DESCRIPTION: PGA502 CPC 20.7 12012

PLANETARY GEARBOX	BRAKE	MOTOR FITTINGS
RATIO CONT TORQUE MAX TORQUE INPUT SPEED LUBRICANT OIL QUANTITY	TYPE BRAKING TORQUE Min. RELEASE PRESSURE Min. MAX PRESSURE LUBRICANT OIL QUANTITY	DESCRIPTION 12012 40X36 25-CH.8 2M12 MOTOR
I=20.7 511 daNm 1022 daNm max2800rpm ISO 3448 01		

INPUT SHAFT

PART. N.	PAINT COLOR	CUSTOMER
WEIGHT *** Kg	MOUNTING POSITION B51	

- Ⓜ BREATHER PLUG Ⓜ DRAIN PLUG
- Ⓜ FILLING PLUG Ⓜ ELBOW
- Ⓜ LEVEL PLUG Ⓜ EXTENSION

PART. N.		PAINT COLOR		CUSTOMER	
WEIGHT *** Kg		MOUNTING POSITION B51			
Hauimed S.r.l. - Via Nicola Sacco, 12 - 47122 Forlì (FC) ITALY - Tel. +39 0543 779518					

DATE 11-04-18
SGN.
N.DIS TEMPOR