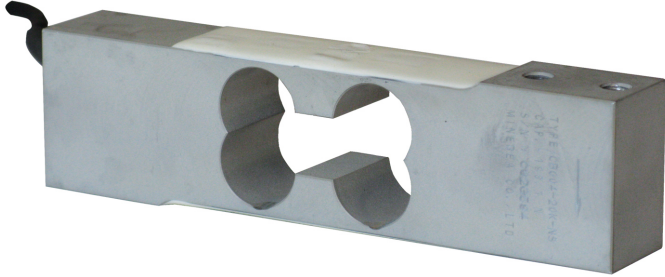




Load Cells

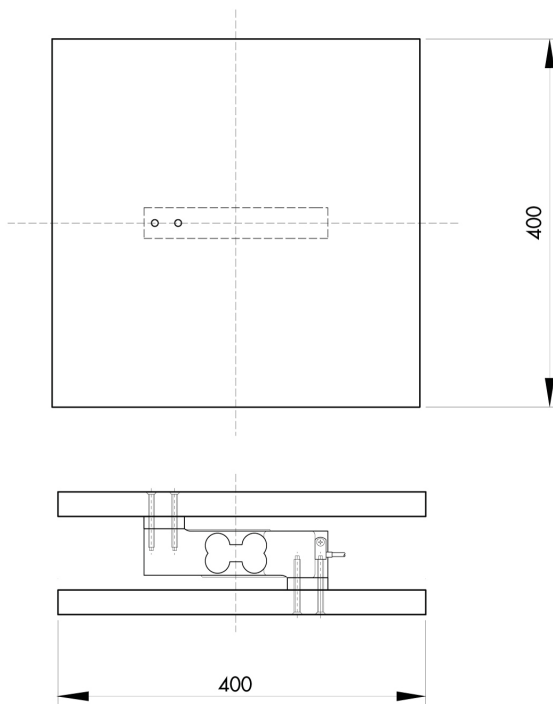
off center



CB004

- Low capacity, high accuracy at a competitive price
- Capacities from 10 to 100 Kg

- IP64 Protection
- O.I.M.L. R60 C3 approved
- Platform maximum size of 400 x 400 mm
- Particularly suitable for the construction of electronic industrial scales, counting and packaging machines



Electrical connection	
+Excitation	Red
-Excitation	White
+Signal	Green
-Signal	Blue
Shield	Cable shield

Error is within 0,01% SN applied with 1/2 of capacity at the position of 100 mm of eccentricity

The center of loading plate and also the center of the load cell should be the same position

TECHNICAL CHARACTERISTICS CB004

Rated load (RL):	10, 15, 20, 25, 30, 35, 45, 60, 100 Kg
Linearity:	< $\pm 0.0125\%$ of RO
Repeatability:	< $\pm 0.02\%$ of R.O.
Creep (20 minutes):	< $\pm 0.02\%$ of R.L.
Safe overload:	150% of R.L.
Ultimate overload:	200% of R.L.
Recommended input:	5÷12 Vdc/Vac
Maximum excitation:	20 Vdc/Vac
Input resistance:	420 +30 -20 Ohm
Output resistance:	350 \pm 5 Ohm
Insulation resistance:	> 2000 M Ohm
Rated output (R.O.):	2 \pm 0.02% mV/V
Zero balance:	< $\pm 0.1\%$ of R.O.
Temperature range:	-10 ÷ +50 °C
Compensated temperature range:	-10 ÷ +50 °C
Temperature effect on zero balance:	< $\pm 0.0013\%$ R.O./°C
Temperature effect on output:	< $\pm 0.0010\%$ sull'uscita/°C
Degree of protection:	IP64
Material:	Alluminum alloy
Electrical connection:	4 conductors shielded cable; length 4 m
Precision class:	3000 n. OIML

