

NOTES:

- A. OPERATION: 195° TURN OF DRIVER OR KEY CAUSES PAWL TO ROTATE THEN PULL UP AS SHOWN.
- B. DETERMINE TOTAL GRIP BY ADDING MAX. OUTER DOOR THICKNESS (INCLUDE ALL ACCESSORIES PLUS COMPRESSED GASKETS AND FRAME THICKNESS).
- C. FIND YOUR TOTAL GRIP IN FRAME TABLE TO DETERMINE THE CORRECT PAWL TYPE.
- D. INSTALLATION:
  1. INSERT LATCH INTO THE HOLE OF THE DOOR IN THE UNLATCHED POSITION. CHECK FOR PROPER ORIENTATION AND OPERATION OF PAWL.
  2. INSTALL LOCKWASHER AND MOUNTING NUT (27mm ACROSS FLATS) ONTO HOUSING. RECOMMENDED TIGHTENING TORQUE FOR MOUNTING NUT IS 20 Nm AND THE MOUNTING SCREW IS 10Nm.
- E. THIS STYLE CANNOT ACCOMMODATE MULTI-POINT LATCHING.
- F. FOR GRIP LENGTHS LESS THAN 15mm, SEE DWG. J-E3-10-1.
- G. FOR SEALED APPLICATIONS USE GASKET E5-17 (ORDERED SEPARATELY.)
- H. SEE SHEET 2 FOR DRIVER AND HEAD STYLES.

**southco**

PROPRIETARY ITEM - EXCEPT FOR USES EXPRESSLY GRANTED IN WRITING INFORMATION DISCLOSED HEREON IS CONFIDENTIAL AND ALL RIGHTS, PATENT AND OTHERWISE ARE RESERVED BY SOUTHCO, INC.

WISE-ACTION™ LATCH - INT'L SERIES  
FIXED GRIP

DATE	DRAWN	CHKD	SCALE	DRAWING NUMBER
22SEP98	JSS	JGK	1:1	J-E3-10

TOTAL GRIP	MAX. OUTER DOOR THICKNESS (LATCH SHIPPED ASSEMBLED)	PAWL TYPE	TOTAL GRIP	MAX. OUTER DOOR THICKNESS (LATCH SHIPPED ASSEMBLED)	PAWL TYPE
15	UNASSEMBLED LATCH	00	35	7	10
17	MOST USE UNASSEMBLED LATCH	01	37	7	11
19	1	02	39	7	12
21	2	03	41	7	13
23	4	04	43	7	14
25	5	05	45	7	15
27	6	06	47	7	16
29	7	07	49	7	17
31	7	08	51	7	18
33	7	09	53	7	19

REV	DATE	DRAWN/CHKD	DESCRIPTION
I	11MAR2003	RLR/MJS	PRN: P2003-0112
J	08APR2004	AAB/JSS	PRN: P2004-0367
K	16MAY2006	RLR/JMDY	PRN: P2005-1625
L	17AUG2007	BWR/	PRN: P2007-1068
M	03OCT2007	GDW/JSS	PRN: P2007-1246
N	11MAY2012	CMS/BGL	PRN: P2012-0565
O	19JAN2015	CMS/MWD	PRN: P2015-0141
P	23FEB2015	CMS/LT	PRN: P2015-0366

**MILLIMETERS**

ALL DIMENSIONS WITHOUT TOLERANCES ARE FOR REFERENCE ONLY.



B  
PAPER  
SIZE

COMPONENT	MATERIAL	FINISH
HOUSING	DIE CAST ZINC	SEE FINISH TABLE
CAP	DIE CAST ZINC	SEE FINISH TABLE
RETAINER	302 STAINLESS STEEL	NATURAL
SPRING	302 STAINLESS STEEL	NATURAL
O-RING	BUNA-N	NATURAL
SLEEVE	1075 STEEL	ZINC IMMERSION COATING
CAM	1075 STEEL	ZINC IMMERSION COATING
SHAFT	LOW CARBON STEEL	ZINC PLATE CHROMATE, PLUS SEALER
PIN	1008 STEEL	ZINC PLATE, CHROMATE DIP
PAWL	1010 STEEL	ZINC PLATE CHROMATE, PLUS SEALER
SCREW	LOW CARBON STEEL	ZINC PLATE BRIGHT CHROMATE
LOCKWASHER	SPRING STEEL	ZINC PLATE CHROMATE, PLUS SEALER
MOUNTING NUT	DIE CAST ZINC	ACRYLIC LATEX SEALER
GASKET SEAL	RUBBER	BLACK
TUBULAR KEY	303 STAINLESS STEEL	
STYLE ONLY	BUSHING ALUMINUM	SEE FINISH TABLE

ASSEMBLY PART No.  
E3- VV WW - XX Z

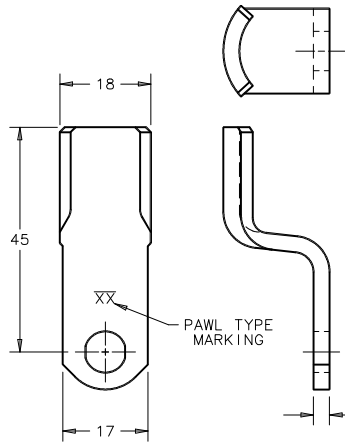
SUBASSEMBLY PART No.  
E3- VV WW- 0 Z

HARDWARE PACKAGE  
E3- VV 0-XX- D

MOUNTING STYLE DRIVER PAWL TYPE FINISH

MOUNTING STYLE DRIVER FINISH

MOUNTING STYLE PAWL TYPE HARDWARE TYPE



**MOUNTING STYLE**

- 10 - LATCH SHIPPED ASSEMBLED, TYPE A (TURN CLOCKWISE TO LATCH)
- 12 - LATCH SHIPPED UNASSEMBLED, TYPE A (TURN CLOCKWISE TO LATCH)
- 27 - LATCH SHIPPED ASSEMBLED, TYPE B (TURN COUNTERCLOCKWISE TO LATCH)
- 29 - LATCH SHIPPED UNASSEMBLED, TYPE B (TURN COUNTERCLOCKWISE TO LATCH)

**FINISH TABLE**

- 1 - BRIGHT CHROME PLATE
- 4 - CARDINAL WHITE POWDER COAT
- 5 - BLACK POWDER COAT
- 6 - LIGHT GREY POWDER COAT
- 7 - SATIN SILVER POLYESTER POWDER COAT
- 8 - SILVER METALLIC URETHANE POWDER COAT
- 9 - LUCENT GREY POWDER COAT

**HARDWARE TYPE**

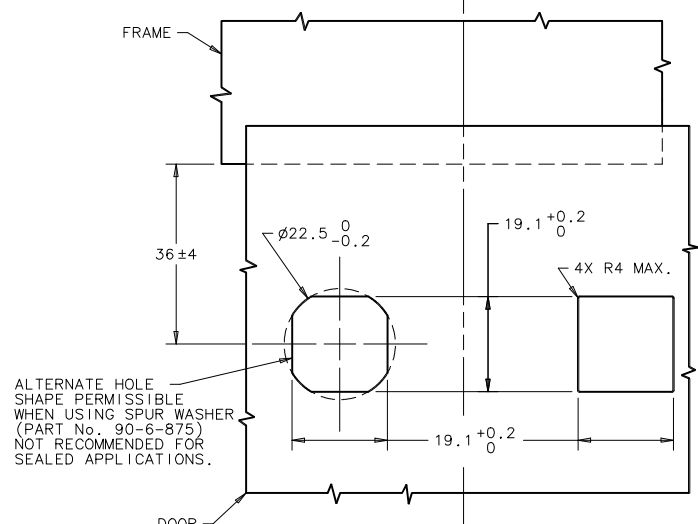
- 7 - WHEN MOUNTING STYLE IS \*SHIPPED ASSEMBLED\*(VV= 10 OR 27)
- 8 - WHEN MOUNTING STYLE IS \*SHIPPED UNASSEMBLED\*(VV= 12 OR 29)
- 30- WHEN MOUNTING STYLE IS \*SHIPPED UNASSEMBLED\* WITH MTG. NUT, LK\*WASHER, SCREW ONLY (VV= 12 OR 29)

**DOOR PREPARATION**

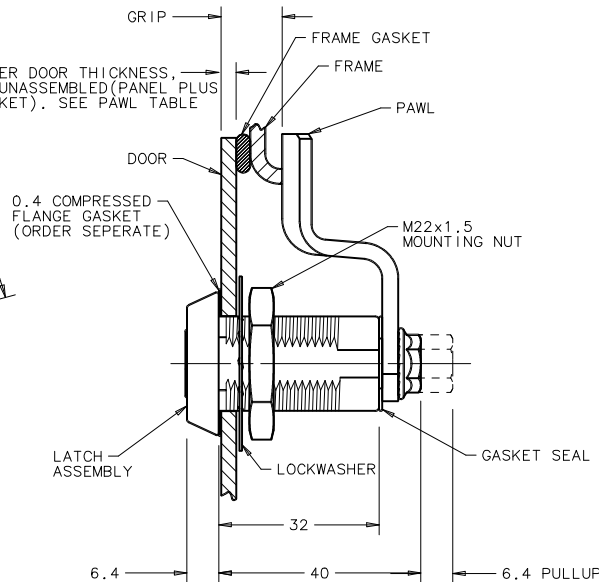
**METHOD A**

**METHOD B**

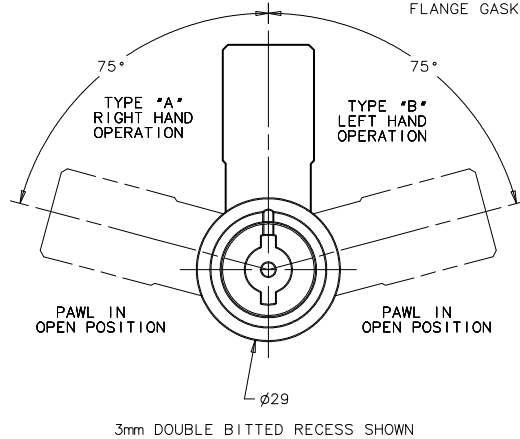
(NOT RECOMMENDED FOR GASKETED APPLICATIONS)



ALTERNATE HOLE SHAPE PERMISSIBLE WHEN USING SPUR WASHER (PART No. 90-6-875) NOT RECOMMENDED FOR SEALED APPLICATIONS.



18 MAX OUTER DOOR THICKNESS, FOR LATCH UNASSEMBLED(PANEL PLUS FLANGE GASKET). SEE PAWL TABLE



**southco**

PROPRIETARY ITEM - EXCEPT FOR USES EXPRESSLY GRANTED IN WRITING, INFORMATION DISCLOSED HEREON IS CONFIDENTIAL AND ALL RIGHTS, PATENT AND OTHERWISE ARE RESERVED BY SOUTHCO, INC.

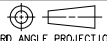
**WISE-ACTION™ LATCH - INT'L SERIES  
FIXED GRIP**

DATE	DRAWN	CHKD	SCALE	DRAWING NUMBER
22SEP98	JSS	JGK	1:1	J-E3-10


REV	DATE	DRAWN/CHKD	DESCRIPTION
I	11MAR2003	RLR/MJS	PRN: P2003-0112
J	08APR2004	AAB/JSS	PRN: P2004-0367
K	16MAY2006	RLR/MDY	PRN: P2005-1625
L	17AUG2007	BWR/	PRN: P2007-1068
M	03OCT2007	GDW/JSS	PRN: P2007-1246
N	11MAY2012	CMS/BGL	PRN: P2012-0565
O	19JAN2015	CMS/MWD	PRN: P2015-0141
P	23FEB2015	CMS/LT	PRN: P2015-0366

**MILLIMETERS**

ALL DIMENSIONS WITHOUT TOLERANCES ARE FOR REFERENCE ONLY.

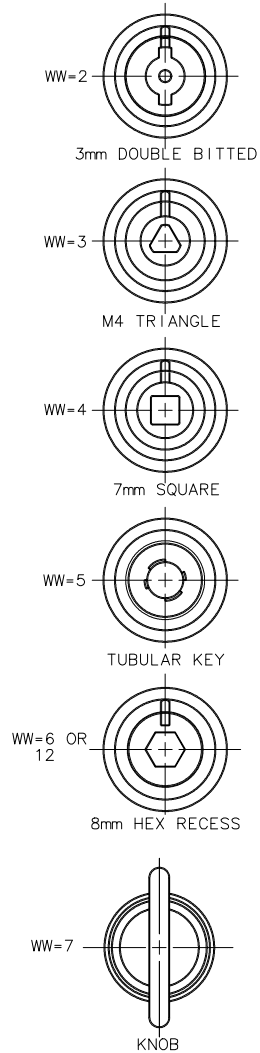


THIRD ANGLE PROJECTION

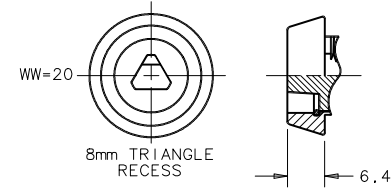
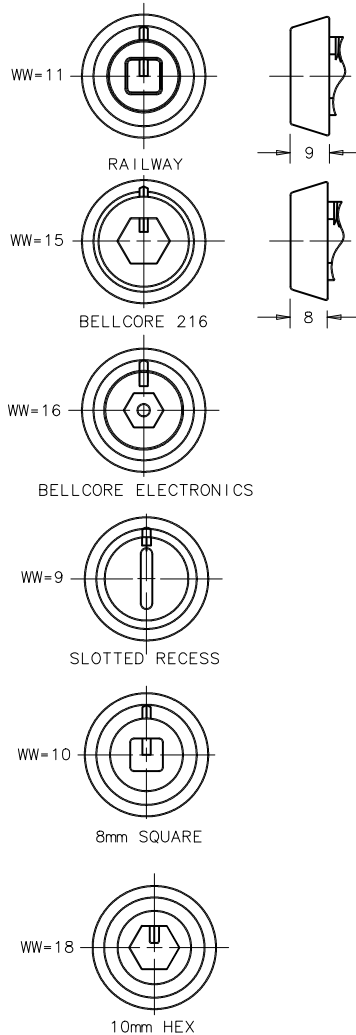


B PAPER SIZE

**DRIVER**

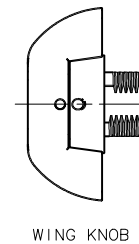
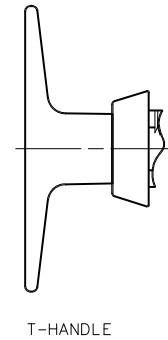


**DRIVER**



WW=1 - NONLOCKING  
WW=8 - LOCKING: CH-751

WW=50 - NON LOCKING  
WW=51 - LOCKING (CH751)  
WW=57 - LOCKING (14603)  
WW=58 - SHUTTERED, REVERSIBLE(RK001)  
WW=59 - WITHOUT LOCK PLUG (NOTE F)  
(CUSTOMER INSTALLED)



(SEE DRAWINGS J-E3-10-4 AND J-E3-11-2 FOR DETAILS.)