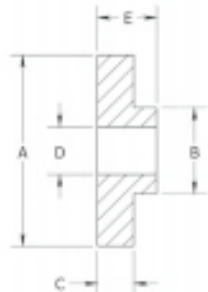


# Sorbothane® Bushings & Washers



Sorbothane® Bushings are designed to isolate vibration and absorb shock. Using two bushings together or a bushing and washer(s), you can create a floating bolt that isolates the unit from any metal-to-metal contact. Different durometers allow for different spring rates. Load ratings assume a 10%-20% deflection of the material. This deflection is achieved by a combination of system weight and torquing of the connecting bolts. Do not over torque the bolts as this defeats the intended vibration isolation and shortens bushing life. Use a high-quality (thread deforming) lock nut. Bushings may be used in tension connections.

## BUSHINGS



PART NUMBER	DIMENSIONS					DURO	RATED LOAD (lbs)	NOTES
	A (DIA)	B	C	D	E			
0576170-30-10	0.72	0.50	0.15	0.28	0.22	30	3 - 8	
0576170-50-10	0.72	0.50	0.15	0.28	0.22	50	4 - 11	
0576170-70-10	0.72	0.50	0.15	0.28	0.22	70	8 - 21	
0510005-30-10	1.00	0.46	0.19	0.28	0.31	30	7 - 18	
0510005-50-10	1.00	0.46	0.19	0.28	0.31	50	15 - 25	
0510005-70-10	1.00	0.46	0.19	0.28	0.31	70	20 - 42	
0510002-30-10	1.00	0.45	0.19	0.25	0.60	30	13 - 22	Mp004232
0510002-50-10	1.00	0.45	0.19	0.25	0.60	50	22 - 33	
0510002-70-10	1.00	0.45	0.19	0.25	0.60	70	28 - 44	