

Maximum 433 kW (580 hp) @2300 RPM (PLEASURE CRAFT)

**STANDARD EQUIPMENT**

**MG-5085SC**

- Vertical offset, aluminum housing
- Mechanical control valve
- Oil strainer

**MG-5085A**

- Vertical offset, aluminum housing
- 7° down angle on output shaft
- Mechanical control valve
- Oil strainer



**INPUT RATINGS - KILOWATS (KW) (HORSEPOWER (HP))\***

For service classification definitions and important notes refer to [www.twindisc.com](http://www.twindisc.com), the Twin Disc Marine Product Guide or contact Twin Disc directly.

**MG-5085SC**

Reduction Ratios :1	Pleasure Craft @ 2300 RPM	Light Duty @ 2300 RPM	Intermediate Duty @ 2100 RPM	Medium Duty @ 1800 RPM	Continuous Duty @ 1800 RPM
1.05, 1.22 1.42, 1.50 1.76	433 kW (580 hp)	404 kW (542 hp)	287 kW (385 hp)	250 kW (335 hp)	227 kW (305 hp)
1.96	410 kW (550 hp)	383 kW (514 hp)			
2.33	365 kW (490 hp)	342 kW (459 hp)	268 kW (360 hp)	225 kW (302 hp)	205 kW (275 hp)

**MG-5085A**

Reduction Ratios :1	Pleasure Craft @ 2300 RPM	Light Duty @ 2300 RPM	Intermediate Duty @ 2100 RPM	Medium Duty @ 1800 RPM	Continuous Duty @ 1800 RPM
1.05, 1.22 1.47, 1.72	433 kW (580 hp)	404 kW (542 hp)	287 kW (385 hp)	250 kW (335 hp)	227 kW (305 hp)
2.04	410 kW (550 hp)	383 kW (514 hp)			
2.43	365 kW (490 hp)	342 kW (459 hp)	268 kW (360 hp)	225 kW (302 hp)	205 kW (275 hp)

\* Ratings shown for use with standard right-hand rotation engines.  
The maximum allowable rated engine speed is 3200 rpm.



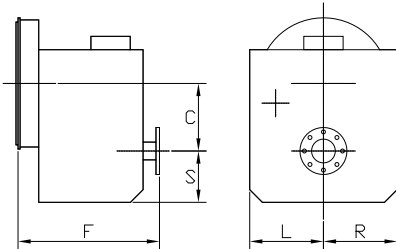
## OPTIONS

	MG-5085SC	MG-5085A
SAE J617 housing no. 1	X	X
SAE J617 housing no. 2	X	X
SAE J617 housing no. 3	X	X
Flexible coupling for 14" flywheel (SAE J620 size 355)	X	X
Flexible coupling for 11½" flywheel (SAE J620 size 290)	X	X
Electric control valve (12VDC or 24 VDC)	X	X
Mechanical trolling valve	X	X
Oil cooler with thermostatic bypass valve	X	X
Companion flange/ bolts set	X	X
Monitoring devices to customer's specification	X	X
Mounting brackets	X	X
Live PTO		
SAE J744 size 101-2/4, 22-4 (SAE "B", 2/4-bolt) – max. 197 Nm	X	X
Dry weight incl. SAE #1 housing and SAE 355 flexible coupling	120 kg	123 kg

For nearly a century, we've been making boats perform better and more reliably. From system-design consultation to application development to in-service support, Twin Disc provides fully integrated propulsion solutions that will optimize your craft's performance, reliability and safety over the years. Bring Twin Disc aboard early in the development process, and you'll enjoy a lifetime of enhanced operating value.

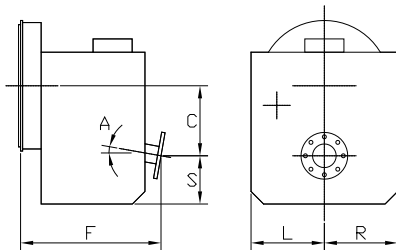
TRANSMISSIONS • ELECTRONIC CONTROLS • EXPRESS JOYSTICK SYSTEM® • SAILDRIVES • EXPRESS POSITIONING® • ARNESON SURFACE DRIVES • MARINE CONTROL DRIVES • ROLLA PROPELLERS • BOW & STERN THRUSTERS • STEERING SYSTEMS • RUDDERS • TRIM TABS

### MG-5085SC



C	152 mm (6.00")
S	133 mm (5.22")
F	373 mm (14.67")
L	254 mm (10.00")
R	165 mm (6.50")

### MG-5085A



C	170 mm (6.69")
S	123 mm (4.84")
F	373 mm (14.69")
L	254 mm (10.00")
R	165 mm (6.50")
A	7°

