

ORIGINAL

MATERIAL 320-340 OHMS @ E, 2.5-6.5 OHMS @ F

APPR. # 3528

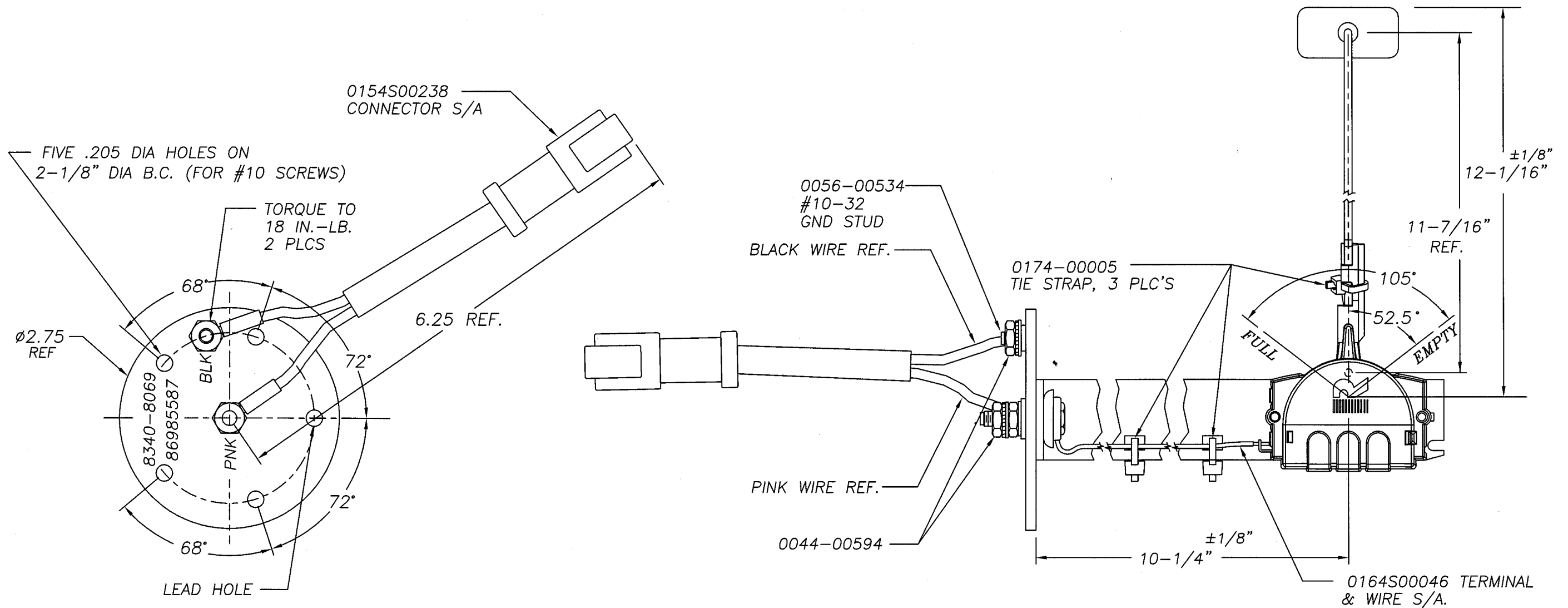
DRAWING NUMBER
8340-08069

PRODUCTION NOTES:

1. USE 0049S01926 SUPPORT & HEAD S/A.
2. CHECK PER DS-1253.
3. USE 0153S00971 CARD/TERMINAL S/A.
4. USE 6553S12060 FLOAT S/A. 11-7/16" = "A" DIMENSION ON FLOAT S/A DRAWING.
5. MARK HEAD WITH P/N'S & WIRE COLORS AS SHOWN.
6. MARK HEAD WITH DATE CODE PER DS-1237.
7. ASSEMBLE CARD HOLDER/SUPPORT PER DS-1255.
8. USE 0015-00716 GASKET.

CASE NEW HOLLAND

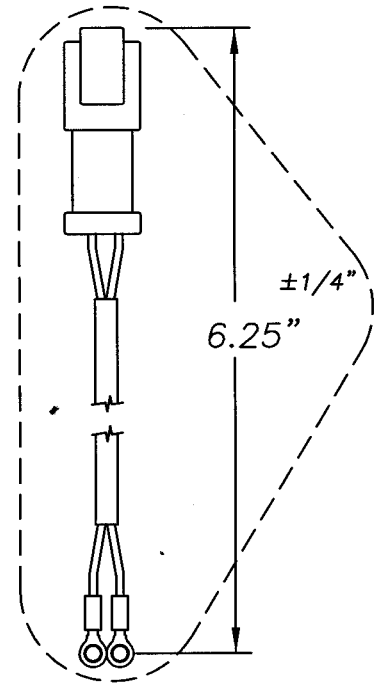
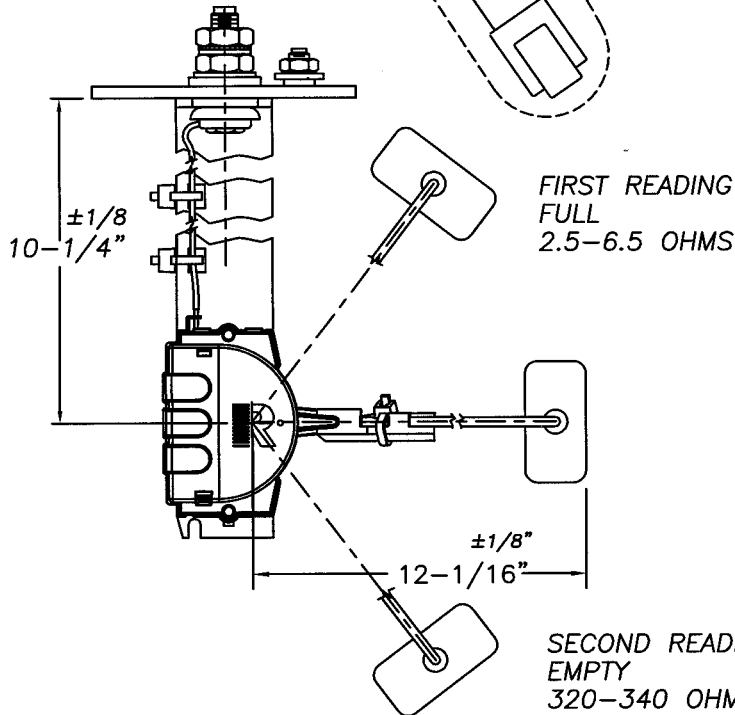
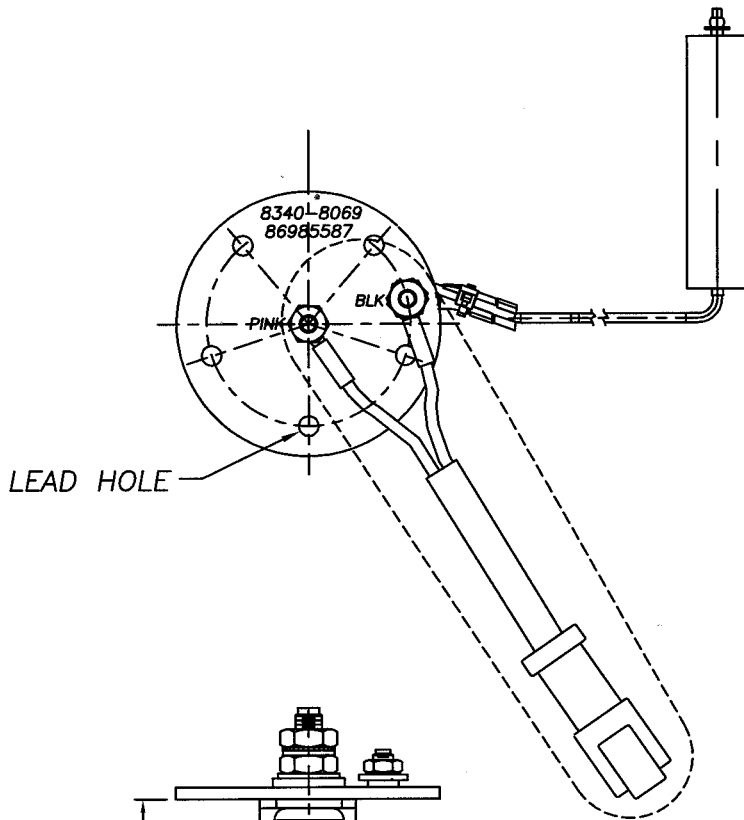
P/N 86985587



D	0056-00534 WAS 0056-00505, 0015-00716 WAS 0015-00933.	17335	1/26 /05	E	ADD 44-594 CALLOUT; EMPTY & FULL WERE E & F	19267	7/24 06				
A	ADD CUST P/N STAMP TO HEAD	13294	12/17 02	B	DEL. 44-490, 2; 18 WAS 14 IN-LBS	15849	11/12 03	C	ADDED "BLK" & "PNK" TO HEAD, ADDED "& WIRE COLORS" TO NOTE 5.	15991	3/18 /04
LET	REVISIONS	E.R.#	DATE	LET	REVISIONS	E.R.#	DATE	LET	REVISIONS	E.R.#	DATE
TOLERANCES FRAC. 3 PL NOT SHOWN ±1/64 ±.010		ANGLES MAT'L COMMERCIAL ±3° TOLERANCES		DO NOT SCALE DRAWING		SUPERSEDES NEW		DRAWN JJ		CHK. E.R.# 13294	
ROCHESTER GAUGES, INC., OF TEXAS DALLAS, TEXAS, U.S.A.		SCALE 3/4		DATE 3/12/02		PART NAME TM FUEL LEVEL SENDER		DRAWING NUMBER 8340-08069			

NOTES:

1. CARD P/N: 0153S00971
2. CARD MARKED: 970



LET	REVISIONS	E.R.#	DATE	LET	REVISIONS	E.R.#	DATE
TOLERANCES NOT SHOWN	FRAC. $\Delta\Delta\Delta$	ANGLES $\pm 3^\circ$	MAT'L COMMERCIAL TOLERANCES	DRAWN \mathcal{R}	CHK.	E.R.# 18686	DO NOT SCALE DRAWING
$\pm 1/64$	$\pm .010$						
R	ROCHESTER GAUGES, INC., OF TEXAS DALLAS, TEXAS, U.S.A.			SUPERSEDES NEW		USED ON	
SCALE 1/2	DATE 2/20/06	PART NAME FUNCTIONAL FEATURE DRAWING			DRAWING NUMBER 8340-08069		