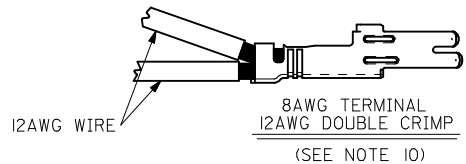
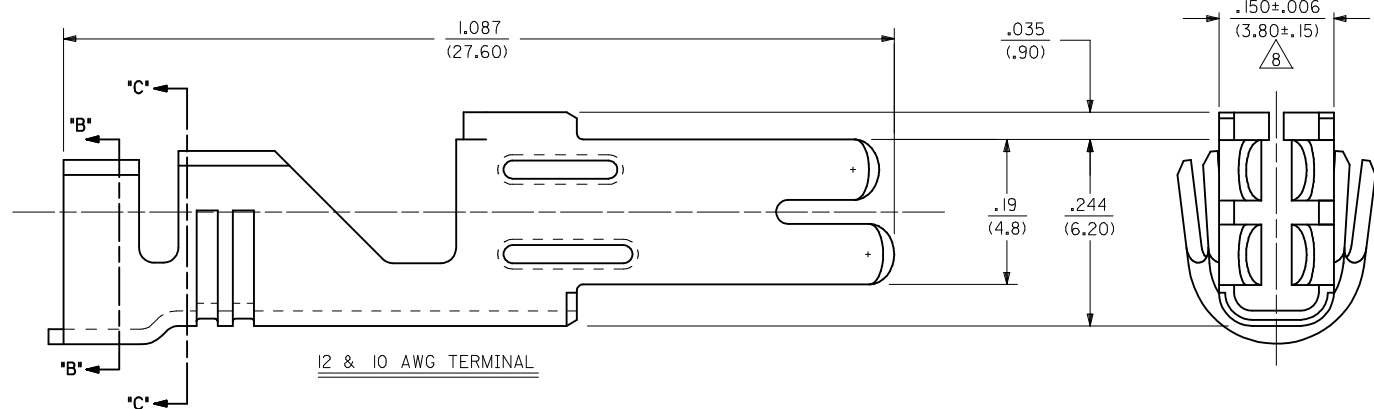
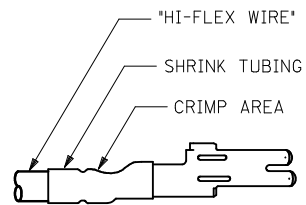


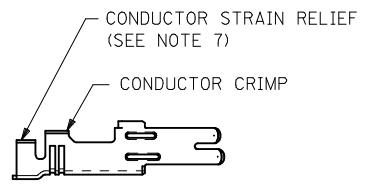
ISOMETRIC VIEW
(SCALE 4:1)



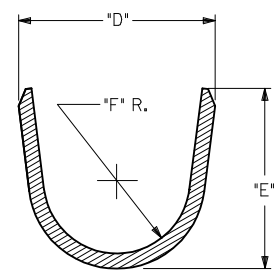
8AWG TERMINAL
12AWG DOUBLE CRIMP
(SEE NOTE 10)



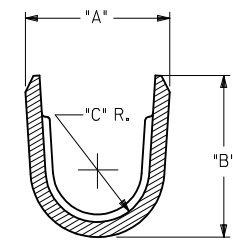
8 AWG TERMINAL
(SEE NOTE 9)



8 AWG TERMINAL
(SEE NOTE 7)



SECTION B-B



SECTION C-C
(BACKGROUND OMITTED)

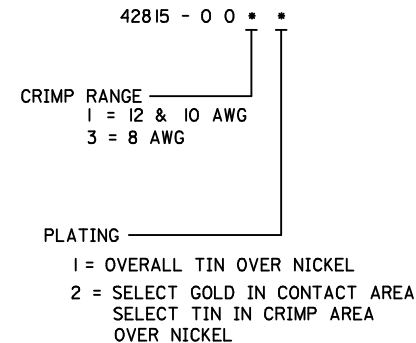
REDRAWN IN ME10 EC NO: UCP2005-2769 DRWN: JOMERC1 2005/06/17 CHKD: JOMERC1 2005/06/17 APPR: JOMERC1 2005/06/17	DESCRIPTION H1	QUALITY SYMBOLS $\nabla=0$ $\nabla=0$	GENERAL TOLERANCES (UNLESS SPECIFIED)		DIMENSION STYLE IN/MM	SCALE 8:1	DESIGN UNITS METRIC	THIRD ANGLE PROJECTION																														
		<table border="1"> <thead> <tr> <th></th> <th>mm</th> <th>INCH</th> </tr> </thead> <tbody> <tr> <td>4 PLACES ±</td> <td>---</td> <td>±---</td> </tr> <tr> <td>3 PLACES ±</td> <td>---</td> <td>±.010</td> </tr> <tr> <td>2 PLACES ±</td> <td>0.25</td> <td>±.016</td> </tr> <tr> <td>1 PLACE ±</td> <td>0.40</td> <td>±---</td> </tr> </tbody> </table>		mm	INCH	4 PLACES ±	---	±---	3 PLACES ±	---	±.010	2 PLACES ±	0.25	±.016	1 PLACE ±	0.40	±---	<table border="1"> <thead> <tr> <th>DRAWN BY</th> <th>DATE</th> </tr> </thead> <tbody> <tr> <td>RJF</td> <td>1/6/92</td> </tr> </tbody> </table>	DRAWN BY	DATE	RJF	1/6/92	<table border="1"> <thead> <tr> <th>CHECKED BY</th> <th>DATE</th> </tr> </thead> <tbody> <tr> <td>RJF</td> <td>1/6/92</td> </tr> </tbody> </table>	CHECKED BY	DATE	RJF	1/6/92	<table border="1"> <thead> <tr> <th>TITLE</th> <th>DATE</th> </tr> </thead> <tbody> <tr> <td>FEMALE CRIMP TERMINAL, 12, 10 & 8AWG MINIFIT SR.</td> <td>1/6/92</td> </tr> </tbody> </table>	TITLE	DATE	FEMALE CRIMP TERMINAL, 12, 10 & 8AWG MINIFIT SR.	1/6/92	<table border="1"> <thead> <tr> <th>APPROVED BY</th> <th>DATE</th> </tr> </thead> <tbody> <tr> <td>RAS</td> <td>1/6/92</td> </tr> </tbody> </table>	APPROVED BY	DATE	RAS	1/6/92	MATERIAL NO. SEE CHART
	mm	INCH																																				
4 PLACES ±	---	±---																																				
3 PLACES ±	---	±.010																																				
2 PLACES ±	0.25	±.016																																				
1 PLACE ±	0.40	±---																																				
DRAWN BY	DATE																																					
RJF	1/6/92																																					
CHECKED BY	DATE																																					
RJF	1/6/92																																					
TITLE	DATE																																					
FEMALE CRIMP TERMINAL, 12, 10 & 8AWG MINIFIT SR.	1/6/92																																					
APPROVED BY	DATE																																					
RAS	1/6/92																																					
DRAFT WHERE APPLICABLE MUST REMAIN WITHIN DIMENSIONS			SIZE C		THIS DRAWING CONTAINS INFORMATION THAT IS PROPRIETARY TO MOLEX INCORPORATED AND SHOULD NOT BE USED WITHOUT WRITTEN PERMISSION																																	

ITEM NUMBER	WIRE RANGE	DIM. A	DIM. B	DIM. C	DIM. D	DIM. E	DIM. F	MAX. INSULATION DIAMETER	PLATING
42815-0011	12 & 10 AWG	$\frac{.213 \pm .024}{(5.40 \pm .60)}$	$\frac{.240 \pm .016}{(6.10 \pm .40)}$	$\frac{.067}{(1.70)}$ R.	$\frac{.232 \pm .024}{(5.90 \pm .60)}$	$\frac{.260 \pm .016}{(6.60 \pm .40)}$	$\frac{.087}{(2.20)}$ R.	$\frac{.209}{(5.30)}$ DIA.	OVERALL TIN
42815-0031	8 AWG	$\frac{.229 \pm .024}{(5.83 \pm .60)}$	$\frac{.292 \pm .016}{(7.42 \pm .40)}$	$\frac{.067}{(1.70)}$ R.	$\frac{.236 \pm .024}{(6.00 \pm .60)}$	$\frac{.216 \pm .016}{(5.50 \pm .40)}$	$\frac{.087}{(2.20)}$ R.	$\frac{.260}{(6.60)}$ DIA.	
42815-0012	12 & 10 AWG	$\frac{.213 \pm .024}{(5.40 \pm .60)}$	$\frac{.240 \pm .016}{(6.10 \pm .40)}$	$\frac{.067}{(1.70)}$ R.	$\frac{.232 \pm .024}{(5.90 \pm .60)}$	$\frac{.260 \pm .016}{(6.60 \pm .40)}$	$\frac{.087}{(2.20)}$ R.	$\frac{.209}{(5.30)}$ DIA.	SELECT GOLD
42815-0032	8 AWG	$\frac{.229 \pm .024}{(5.83 \pm .60)}$	$\frac{.292 \pm .016}{(7.42 \pm .40)}$	$\frac{.067}{(1.70)}$ R.	$\frac{.236 \pm .024}{(6.00 \pm .60)}$	$\frac{.216 \pm .016}{(5.50 \pm .40)}$	$\frac{.087}{(2.20)}$ R.	$\frac{.260}{(6.60)}$ DIA.	

NOTES:

- 1) MATERIAL: COPPER ALLOY 151, .020/(.50) THICK.
- 2) PLATING:
 - 1 = .000100/(.00254) MIN. *TIN OVER
.000050/(.00127) MIN. NICKEL.
 - 2 = .000030/(.00076) MIN. SELECT GOLD IN CONTACT AREA.
.000100/(.00254) MIN. SELECT *TIN ON SOLDER TAILS
OVER .000050/(.00127) MIN. NICKEL.
- * THE PRIMARY SHIPPING CARTON WILL BE LABELED
* COMPLIANT TO ROHS DIRECTIVE 2002/95/EC
AND ELV ANNEX II OF DIRECTIVE 2000/53/EC.
CARTONS WITHOUT THIS LABEL MAY CONTAIN
PRODUCT WITH TIN-LEAD.
- 3) PRODUCT SPEC.: PS-42815-001
- 4) PART IS DESIGNED IN METRIC.
- 5) TERMINALS FOR USE WITH STRANDED WIRE ONLY.
- 6) ITEM NUMBERS PRECEDED BY AN *X IN THE CHART ARE NOT AVAILABLE.
- 7) THE 8 AWG TERMINAL HAS NO INSULATION CRIMP. THE SECONDARY CRIMP SECTION ACTS AS A STRAIN RELIEF ON THE BARE CONDUCTOR ONLY. SEE MOLEX CRIMP SPECIFICATION FOR DETAILS.
- 8) AFTER CRIMPING, THIS DIMENSION IS .140/(3.55) MINIMUM.
- 9) WHEN USING THE 8 AWG TERMINAL WITH 'SUPERFLEX WIRE', MOLEX STRONGLY RECOMMENDS THAT THE APPROPRIATELY RATED HEAT SHRINK INSULATION BE APPLIED OVER THE WIRE INSULATION AND CRIMP AREA, AS SHOWN, TO MINIMIZE WIRE INSULATION CREEPAGE OUTSIDE OF HOUSING.
- 10) THE 8AWG TERMINAL WILL ALSO ACCOMODATE 2 12AWG WIRES
SEE CRIMP SPEC FOR DETAILS.
- 11) CRIMP SPECS.:
638210000 FOR 10AWG & 12AWG
638300000 FOR 8AWG, 8AWG HI-FLEX & DOUBLE 12AWG

LEGEND:



SEE SHEET 1 EC NO: UCP2005-2769 DRWN: JOMERC I CHKD: JOMERC I APPR: JOMERC I H1	2005/06/17 2005/06/17 2005/06/17	DESCRIPTION REV	QUALITY SYMBOLS	GENERAL TOLERANCES (UNLESS SPECIFIED)	DIMENSION STYLE	SCALE	DESIGN UNITS	THIRD ANGLE PROJECTION															
			$\nabla = 0$ $\nabla = 0$	<table border="1"> <tr> <th></th> <th>mm</th> <th>INCH</th> </tr> <tr> <td>4 PLACES</td> <td>± ---</td> <td>± ---</td> </tr> <tr> <td>3 PLACES</td> <td>± ---</td> <td>± .010</td> </tr> <tr> <td>2 PLACES</td> <td>± 0.25</td> <td>± .016</td> </tr> <tr> <td>1 PLACE</td> <td>± 0.40</td> <td>± ---</td> </tr> </table>		mm	INCH	4 PLACES	± ---	± ---	3 PLACES	± ---	± .010	2 PLACES	± 0.25	± .016	1 PLACE	± 0.40	± ---	IN/MM	8:1	METRIC	
				mm	INCH																		
			4 PLACES	± ---	± ---																		
3 PLACES	± ---	± .010																					
2 PLACES	± 0.25	± .016																					
1 PLACE	± 0.40	± ---																					
	<table border="1"> <tr> <th>DRAWN BY</th> <th>DATE</th> </tr> <tr> <td>RJF</td> <td>1/6/92</td> </tr> <tr> <th>CHECKED BY</th> <th>DATE</th> </tr> <tr> <td>RJF</td> <td>1/6/92</td> </tr> <tr> <th>APPROVED BY</th> <th>DATE</th> </tr> <tr> <td>RAS</td> <td>1/6/92</td> </tr> </table>	DRAWN BY	DATE	RJF	1/6/92	CHECKED BY	DATE	RJF	1/6/92	APPROVED BY	DATE	RAS	1/6/92	TITLE	FEMALE CRIMP TERMINAL 10-12 AWG & 8 AWG MINIFIT SR. SERIES								
DRAWN BY	DATE																						
RJF	1/6/92																						
CHECKED BY	DATE																						
RJF	1/6/92																						
APPROVED BY	DATE																						
RAS	1/6/92																						
	MATERIAL NO. SEE CHART	DOCUMENT NO. SD-42815-*	MOLEX INCORPORATED																				

DRAFT WHERE APPLICABLE
MUST REMAIN
WITHIN DIMENSIONS

SIZE C

THIS DRAWING CONTAINS INFORMATION THAT IS PROPRIETARY TO MOLEX INCORPORATED AND SHOULD NOT BE USED WITHOUT WRITTEN PERMISSION