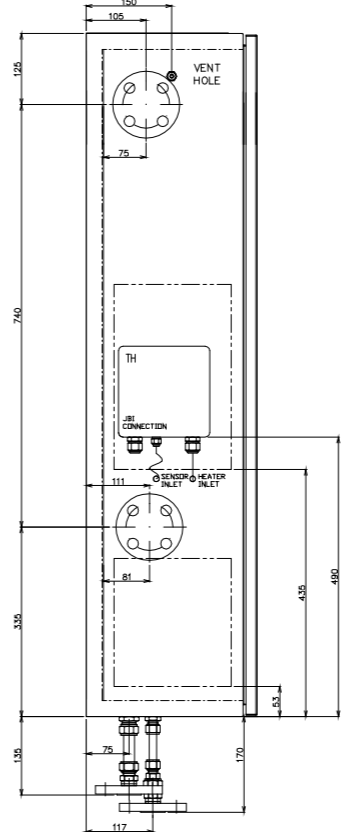
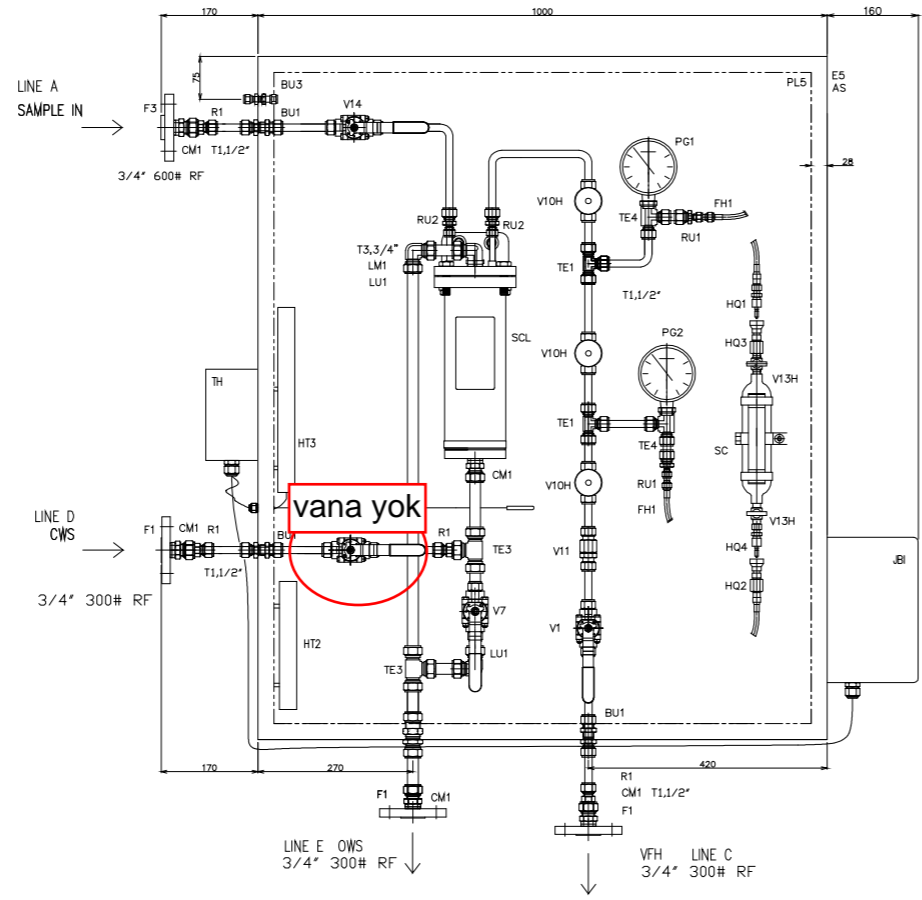
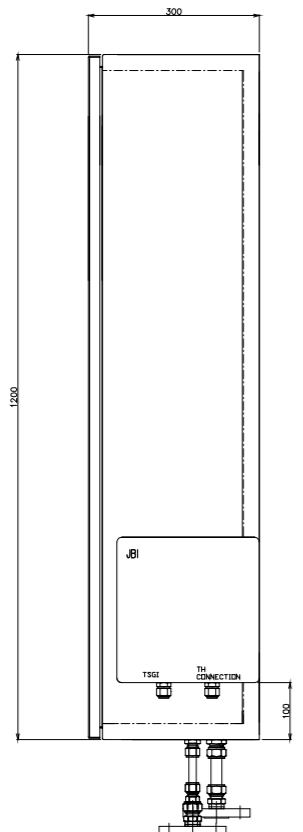


TYPE G3

CODE	PART N <sup>o</sup> .	DESCRIPTION	DIMENSIONS	MATERIAL	MANUFACTURER	QUANTITY	NORM
E5	-	ENCLOSURE	1200X1000X300 mm	SS316	BERCABOX	1	-
F1	-	FLANGE RAISED FACE	3/4" 300#	SS316/SS316L	EUROBRIDAS FITTINGS	3	ANSI B16.5
F3	-	FLANGE RAISED FACE	3/4" 600#	SS316/SS316L	EUROBRIDAS FITTINGS	1	ANSI B16.5
R1	8R12316	FITTING, REDUCER	3/4" DD x 1/2" DD	SS316/SS316L	HEKE	4	ASTM A479
CM1	12CM12316	FITTING, MALE CONNECTOR	3/4" DD x 3/4" NPTM	SS316/SS316L	HEKE	5	ASTM A479
BU1	8BU316	FITTING, BULKHEAD CONNECTOR	1/2" DD x 1/2" DD	SS316/SS316L	HEKE	3	ASTM A479
BU2	12BU316	FITTING, BULKHEAD CONNECTOR	3/4" DD x 3/4" DD	SS316/SS316L	HEKE	1	ASTM A479
BU3	4BU316	FITTING, BULKHEAD CONNECTOR	1/4" DD x 1/4" DD	SS316/SS316L	HEKE	1	ASTM A479
V1	0547X-6666P1/TT	BALL VALVE	1/2" DD	SS316/SS316L	HABONIM	2	CATEGORY M
V14	05 247P-6666M1G/TT+MCLKPX150	BALL VALVE	1/2" DD	SS316/SS316L	HABONIM	1	CATEGORY M
V10H	H-380U-SS-L-V-1/2-RS	NEEDLE VALVE	1/2" DD	SS316/SS316L	HAM LET	3	CATEGORY M
V11	69JF08Y	CHECK VALVE	1/2" DD	SS316/SS316L	HEKE	1	-
V13H	H-380U-SS-N-K-1/4-RS	NEEDLE VALVE	1/4" NPTM	SS316/SS316L	HAM LET	2	CATEGORY M
V7	0747X-6666P1/TT	BALL VALVE	3/4" DD	SS316/SS316L	HABONIM	1	-
RU2	8RU6316	FITTING, REDUCING UNION	1/2" DD x 3/8" DD	SS316/SS316L	HEKE	2	ASTM A479
RU1	8RU4316	FITTING, REDUCING UNION	1/2" DD x 1/4" DD	SS316/SS316L	HEKE	2	ASTM A479
LM1	12LM2316	FITTING, ELBOW UNION	3/4" DD x 3/4" NPTM	SS316/SS316L	HEKE	1	ASTM A479
LU1	12LU316	FITTING, ELBOW UNION	3/4" DD	SS316/SS316L	HEKE	2	ASTM A479
SCL	FSR-6225U	SAMPLE COOLER	0.16m <sup>2</sup> , 11Kg	SS316/SS316L, SS304	SENTRY	1	-
TE1	8TTT316	FITTING, UNION TEE	1/2" DD	SS316/SS316L	HEKE	2	ASTM A479
TE3	12TTT316	FITTING, UNION TEE	3/4" DD	SS316/SS316L	HEKE	2	ASTM A479
TE4	8TFT8316	FITTING, UNION TEE	1/2" DD x 1/2" NPTF x 1/2" DD	SS316/SS316L	HEKE	2	ASTM A479
FH1	TF287-5	FLEXIBLE HOSE	1/4" DD	SS316, SS304, PTFE	HYDRORFER	2	-
PG1/PG2	100=T6500=S=0=04=1=3XBAR=K=SG=WD=NH=C3=CDS=MQ=44HY=EN	PRESSURE GAUGE	100 mm, 1/2" NPTM	SS316/SS316L	ASCHROFT	2	-
SC	4HDY300	SAMPLE CYLINDER	300 cc	SS316/SS316L	HEKE	1	ASTM A269
HQ1	HQC4-D-4-316	QUICK CONNECTOR DESD	1/4" DD	SS316/SS316L	HEKE	1	ASTM A479
HQ2	HQC4-B-4-316	QUICK CONNECTOR BASE	1/4" DD	SS316/SS316L	HEKE	1	ASTM A479
HQ3	HQC4-B-4F-316	QUICK CONNECTOR BASE	1/4" NPTF	SS316/SS316L	HEKE	1	ASTM A479
HQ4	HQC4-D-4F-316	QUICK CONNECTOR DESD	1/4" NPTF	SS316/SS316L	HEKE	1	ASTM A479
T1	THT-3R60-12.7-1.65	TUBING	1/2" x 0.065"	SS316/SS316L	SANDVIK	1700 mm	ASTM A269
T3	THT-3R60-19.05-2.11	TUBING	3/4" x 0.083"	SS316/SS316L	SANDVIK	1900 mm	ASTM A269
AS	CLIMAVER PLUS R	ISOLATION	THICKNESS: 25 mm	GLASS WOOL	ISOVER	3.63 m <sup>2</sup>	-
PL5	-	MOUNTING PLATE	1100x940x2 mm	SS316	BERCABOX	1.034 m <sup>2</sup>	-
JB1	07-3103-1609/Hxxxx	CONTROL STATION ZONE	255x250x160	FIBER REINFORCED POLYESTER	BARTEC	1	ATEX II 2G Ex DE IIC T6 GB
TH	27-6DF2-52321300	SAFETY CONTROL TEMPERATURE BSTWII	160x160x90	FIBER REINFORCED POLYESTER	BARTEC	1	ATEX II 2G Ex DE IIC T6, T5, T4, T3
HT2	HSF-200-T3-1	HEATER 200W	225x206x30	ANODIZED ALUMINUM	BARTEC	1	ATEX II 2G Ex DB IIC T4, T3
HT3	HSF-300-T3-1	HEATER 300W	325x206x30	ANODIZED ALUMINUM	BARTEC	1	ATEX II 2G Ex DB IIC T4, T3



NOTES

GENERAL NOTES

PMD EQUIPMENT LIST  
DESCRIPTION  
SAMPLE POINT WITH CLOSED SAMPLE CONTAINER (NO RETURN), USED FOR GAS

UTE TSGI

DOCUMENT STATUS	SIGNED	DATE
A WITHOUT COMMENTS / RESUBMIT AS "FINAL ISSUE" DOCUMENT		
B WITH COMMENTS / REVISE AND RESUBMIT. WORK MAY PROCEED SUBJECT TO INCORPORATION OF COMMENTS		
C REJECTED / REVISE AND RESUBMIT		
D FOR INFORMATION / ACCEPTABLE FOR INFORMATION ONLY		

SCF SUPPLIER CERTIFIED FINAL  
ISSUE OF CERTIFIED FINAL DOCUMENT DOES NOT RELIEVE SUPPLIER OR RESPONSIBILITY OR LIABILITY UNDER CONTRACT / PURCHASE ORDER.

REV#	DATE	DESCRIPTION	BY	CHKD.	APPR.
02	06/09/17	THIRD REVISION	JC	RJ	AP
01	13/07/17	SECOND REVISION	JC	RJ	AP
00	16/06/17	FIRST REVISION	JC	RJ	AP



VENDOR DWG No:	PD T224509120	APPROVES FOR CONSTRUCTION	DATE:
DC DRAWING No:	VENDOR: IBERFLUID	SIGNATURE:	
STAR REF PROJ. AS. AEGEAN REFINERY PROJECT (1997)	PLANT LOCATION: LONDR - TURKEY	JOB No:	0245
	SCALE: 1:1	CONTRACT No:	STAR-EP-01
	EQUIPMENT No: AS PER LIST	VENDOR JOB No:	99120
		VDR CODE:	PLG-005
PLANT No:	INDEX	OWNER DOCUMENT No:	SHEET
450	A	000-J-EE-V106000000-T09120-7007-000-01	18/25
CAD FILE NAME:			REVISION

ITEM	450-SC-G3-0007	450-SC-G3-0006
SIZE ID (mm) x T/T (mm)	1200 X 1000	1200 X 1000
DESIGN P (Kg/cm <sup>2</sup> ) / T (°C)	43.5 Kg/cm <sup>2</sup> / 410 °C	43.5 Kg/cm <sup>2</sup> / 410 °C
OPERATION P (Kg/cm <sup>2</sup> ) / T (°C)	38.8 Kg/cm <sup>2</sup> / 370 °C	38.8 Kg/cm <sup>2</sup> / 370 °C
MATERIAL	SS316/SS316L	SS316/SS316L
INSULATION	INSULATION	INSULATION
PG1 INSTRUMENT TAG	450-PG-0057	450-PG-0071
PG1 INSTRUMENT SCALE	0-60Kg/cm <sup>2</sup>	0-60Kg/cm <sup>2</sup>
PG2 INSTRUMENT TAG	450-PG-0058	450-PG-0072
PG2 INSTRUMENT SCALE	0-60Kg/cm <sup>2</sup>	0-60Kg/cm <sup>2</sup>