

**Order example:**

Pulley AI 70 AT10 / 25 - 2 hub Ø 60x10 d = 30 H7 with keyway

Material \_\_\_\_\_

Width  $B_N$  \_\_\_\_\_

Type / Pitch \_\_\_\_\_

Number of teeth \_\_\_\_\_

Number of flanges \_\_\_\_\_

Hub dimensions \_\_\_\_\_

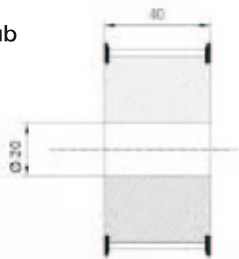
Bore \_\_\_\_\_

Keyway according to DIN 6885 \_\_\_\_\_

Even without supplying a drawing you are able to get a functional and quality product relating to our timing belt program by using our standard order text.

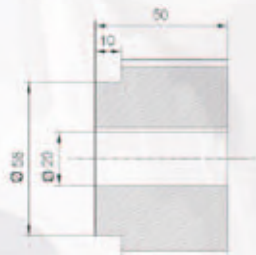
You will find sample order texts for various pulley versions linked to the following drawings.

**without hub**



Order text: Timing pulley  
AI 40 AT 10/24-2  
d = 20 H7

**with hub**

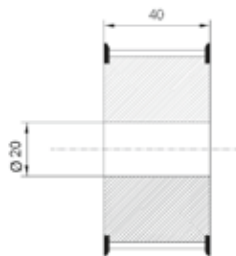


Order text: Timing pulley  
AI 50 AT 10/24-0  
Hub Ø 58 x 10  
d = 20 H7 with keyway

# Ordering information

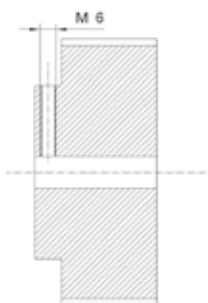
## Position and number of flanges

### Number of flanges: 2



Order text: Timing pulley  
 AI 40 AT 10/24-2  
 d = 20 H7

### Bore fastening



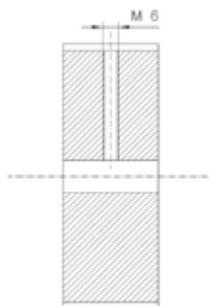
Order text for bore fastener:  
 Tapped hole M6, centre of hub

### Number of flanges: 1



Order text for a flange  
 opposite the hub side: \_\_\_\_\_-1g

### Bore fastening



Order text for bore fastener:  
 Tapped hole M6, centre of tooth gap

### Number of flanges: 1



Order text for a flange  
 on the hub side: \_\_\_\_\_-1a

### Further order codes:

Tapped hole M4, centre through keyway  
 (or opposite keyway)

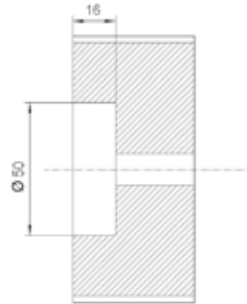
Tapped hole M4, centre through tooth gap  
 (or through tooth)

Tapped hole M4, centre of hub  
 90° offset to keyway

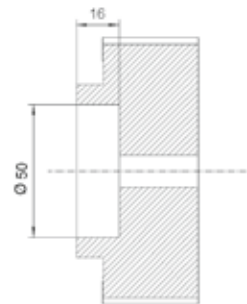
2 tapped holes M4, centre of hub  
 90° and 180° offset to keyway

## Position and dimensions of turned recesses

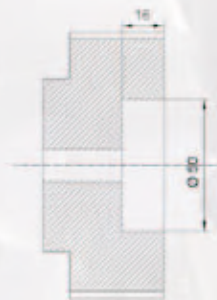
---



Order text for turned recess:  
Turned recess 50 x 16 deep



Order text for turned recess:  
Turned recess 50 x 16 deep hub side



Order text for turned recess:  
Turned recess 50 x 16 deep opposite hub