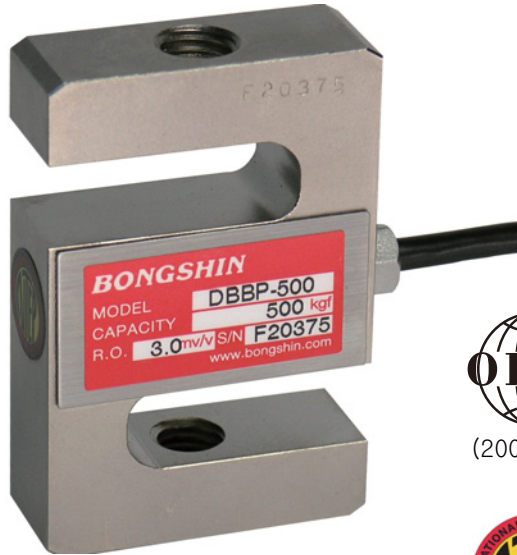


Model DBBP Series

S- Beam Load Cell (20kg ~ 5t)

The DBBP S-beam load cell is designed for industrial scale conversion and a variety of process applications.

- Alloy tool steel construction for high accuracy.
- Electroless nickel plated for corrosion resistance.
- Fully sealed to IP67



(200kg~1t)



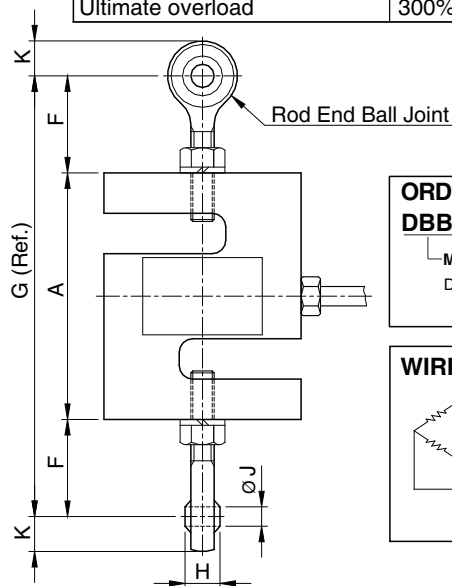
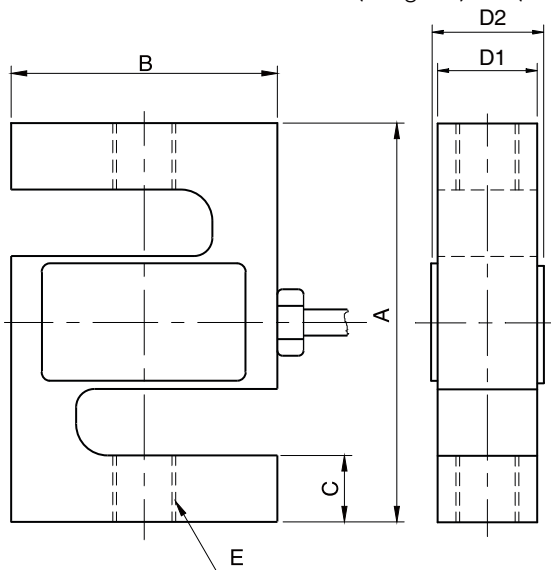
(20kg~5t)



(500kg~5t)

SPECIFICATIONS

MODEL	DBBP
Rated capacity (R.C.)	20, 50, 100, 200, 500kg 1, 2, 3, 5t
Rated output(R.O.)	3.0mV/V ± 0.5%
Non-linearity	≤ 0.03% R.O.
Hysteresis	≤ 0.03% R.O.
Non-repeatability	≤ 0.02% R.O.
Creep error	≤ 0.03% in 20min.
Zero balance	≤ 1% R.O.
Compensated temperature range	-10 ~ 70°C
Operating temperature range	-20 ~ 80°C
Temp. effect on rated output	≤ 0.02% LOAD/10°C
Temp. effect on zero balance	≤ 0.02% R.O./10°C
Terminal input resistance	350 Ohms ± 3.5 Ohms
Terminal output resistance	350 Ohms ± 5 Ohms
Insulation resistance (Min.)	2000 MOhms at 50V DC
Excitation voltage	3~12V(Recommended), 15V(Max.)
Electrical connection	∅5mmx3m(22AWG x 4Core Shielded)
Protection class	meets IP 67
Safe overload	150% R.C
Ultimate overload	300% R.C



ORDERING INFORMATION	
DBBP - 5T	
MODEL	CAPACITY
DBBP	20, 50, 100, 200, 500kg 1, 2, 3, 5ton

WIRING INFORMATION	
	RED : EXC. (+)
	GREEN : SIG. (+)
	WHITE : EXC. (-)
	BLUE : SIG. (-)
	BARE : GND.

Dimension-mm

Rated Capacity	A	B	C	D	E	F	G	H	J	K	Rod End Ball Joints	Weight(kg)
20~100kg (196.1 ~ 980.7N)	63.5	50.8	10.4	12.7	M6x1P	25	113.5	9	6	9	SRDB 1	0.40
200, 500kg (1.961, 4.903kN)	76.2	50.8	12.7	19.0	M12x1.75P	41	158.2	16	12	16	SRDB 2	0.55
1t (9.807kN)	76.2	50.8	16.0	25.4	M12x1.75P	41	158.2	16	12	16	SRDB 2	0.73
2t (19.61kN)	108.0	76.2	20.0	32.0	M20x1.5P	55	218	25	20	23	SRDB 3	1.70
3, 5t (29.42, 49.03kN)	120.7	88.9	22.1	32.0	M24x2P	55	230.7	28	22	32	SRDB 4	2.10

* Specifications are subject to change without notice

APR, 2018