

2400 Series – Cam Action Door Closers

The Briton 2400 Series is a precision manufactured cam-action, slide channel door closer, in a compact concealed unit. With the closer body mounted within the top of the door and the slide track within the head frame, the Briton 2400 Series offers high resistance to abuse and offers a highly aesthetic solution being fully concealed when the door is closed. Suitable for doors 44mm thick and above.

Providing exceptional ease of use by reducing the resistance encountered when opening the door, the Briton 2400 Series bridges the gap between the requirements for fire and smoke control and ease of operation required for accessibility.



Adjustments: **1** - Closing power; **2** - Closing speed; **3** - Latch action; **4** - Backcheck

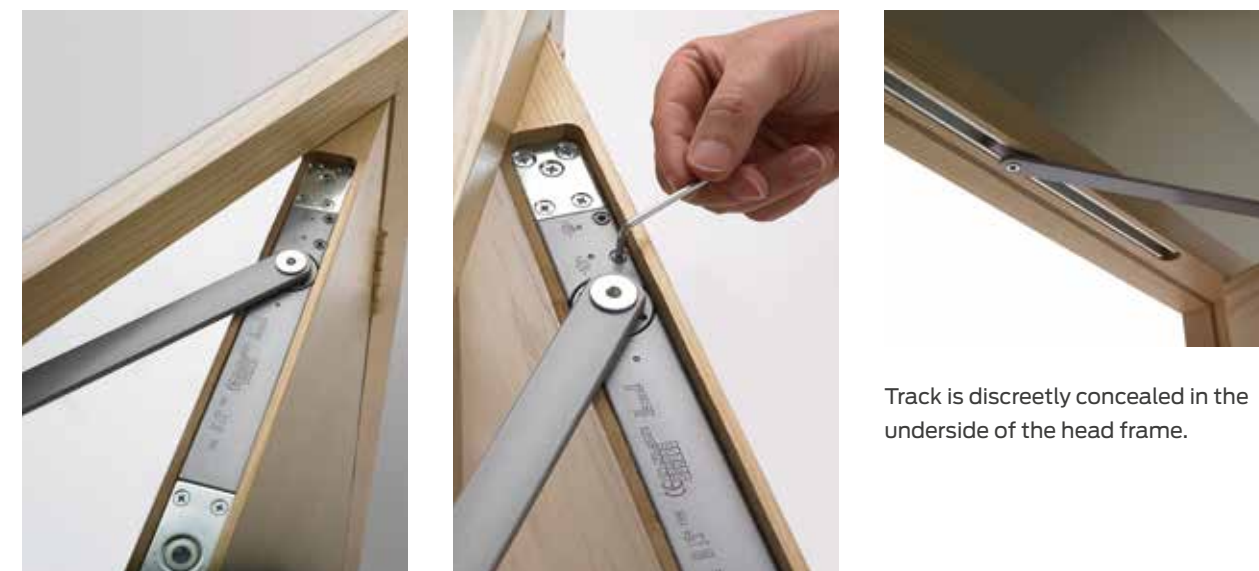
Highly efficient, compact and concealed

Principal Features & Benefits

- A** Compact extruded aluminium body which requires minimal removal of material from the door and frame.
- B** High performance cam action technology is extremely efficient, providing reliable closing but easy to open
- C** Needle roller bearings provide increased bearing load for efficient operation and improved reliability.
- D** Power adjustment allows installers to adjust the spring power to suit the size and location of the door
- E** Silicon chrome alloy steel springs for superior strength and reliability.
- F** High quality hydraulic fluid with built-in temperature compensation ensures reliable performance without the need for seasonal adjustment.
- G** Aluminium slide track 23mm wide with nylon runner
- H** Powder coated steel track arm
- J** Optional cushion stop helps to prevent doors from opening beyond the limit of the door closer - please note, this is not a backcheck facility

Factory preparation is recommended to ensure the minimum amount of door and frame material is removed and to ensure an accurate installation.

Briton 2400 Series door closers are packed complete, reducing the possibility of lost or missing parts.



Track is discreetly concealed in the underside of the head frame.

Testing & Certification

CE marked to EN1154 (AD5114)

Fire tested to EN1634 on timber doors to achieve up to 90 minute fire rating when used in conjunction with the intumescent pack 2420.IP

FD30 - Min. door thickness 44mm

FD60 - Min. door thickness 54mm

FD90 - Min. door thickness 58mm

EPD certified

Full Declaration of Performance available from our website at:

www.britondops.co.uk

What's in the box?

- Closer Body
- Armset and Track
- Fixing Pack
- Installation Instructions



2400 Series - Cam Action Door Closers

Product features		Product references
EN Closer size	max. door size [width - weight]	2420T
1	750mm - 20kg	
2	850mm - 40kg	■
3	950mm - 60kg	■
4	1100mm - 80kg	■
5	1250mm - 100kg	
6	1400mm - 120kg	
CE marked and EN 1154 compliant		■
Variable closing power EN size		2 - 4
Min. door thickness for FD60 doors		54mm
Max. angle of opening		120°
Separate closing speed & latch action adjustment		■
Adjustable backcheck		
In-built temperature compensation		■
Cushion stop		□
Hold open facility		□
Arm & track finish		Silver, SS or PS
Dimensions (L x D x H mm)		242 x 42 x 32
Channel/slide arm		440 x 17
Finishes (arm)		SS; PS; SE
Warranty period		10yrs
CE Classification		3 8 2-4 1 1 3

■ Feature as standard □ Available as an option

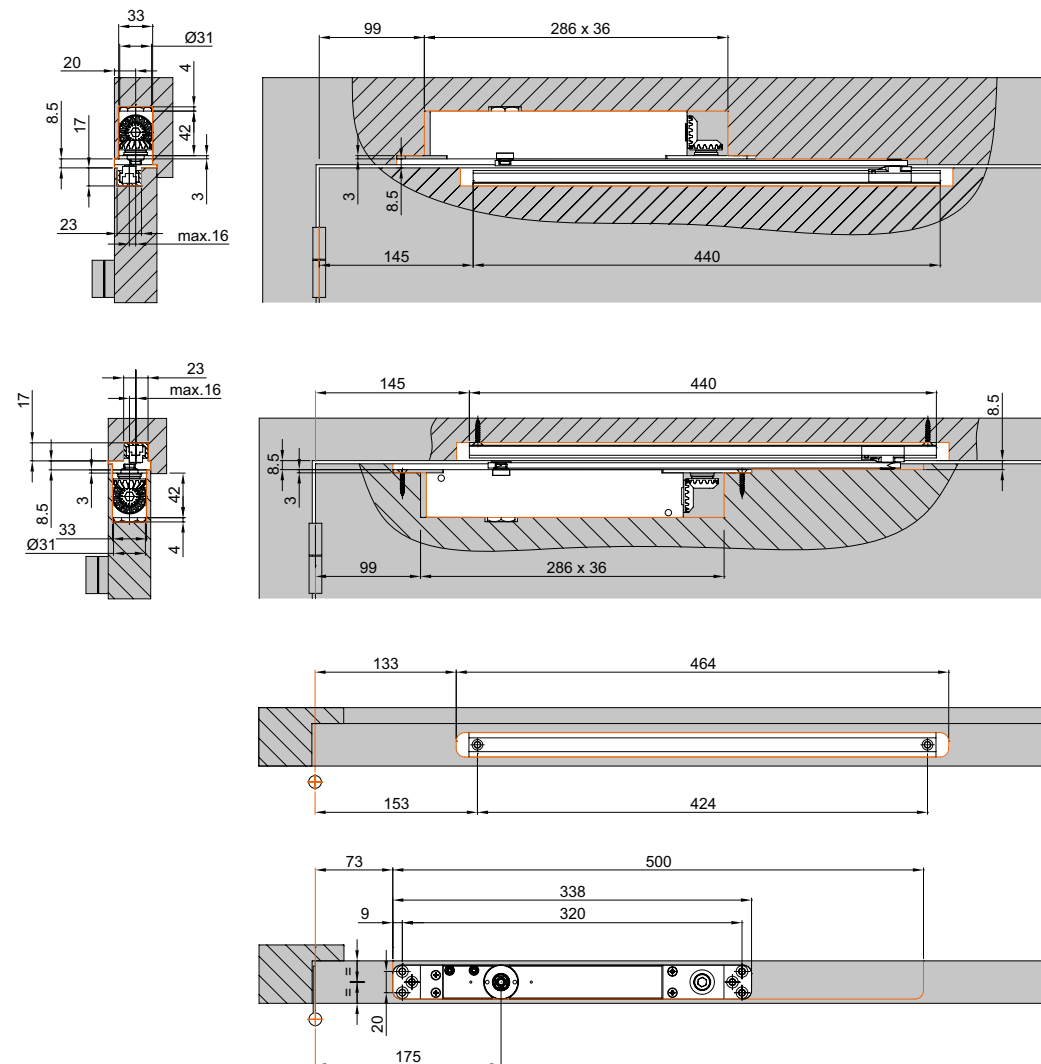
Door Mounted

Closer body mounted in the top of the door leaf and the slide track in the underside of the head frame.



Transom Mounted

Closer body mounted in the underside of the transom and the slide track in the top of the door.



all dimensions are in mm

Intumescent gasket set (2420.IP)

A significant amount of fire resisting doorset material is removed when concealed closers are mortised into the door leaf. The intumescent gasket set will provide the additional performance that is required to protect the door from integrity failure during fire conditions.

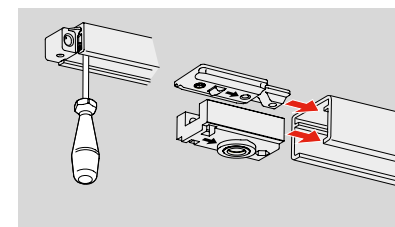
It is particularly important with these closers to check that the details of the fire test certification are relevant to your intended door application.

Additional features

Optional cushion stop (ref: 2420.CS) helps prevent doors from coming into contact with adjacent walls (note: this is not a backcheck function).

Optional mechanical hold-open unit can be retrofitted into the slide track. Hold-open angle can be adjusted from 80° to 120° and allows the door to be manually released from the hold-open position.

Mechanical hold-open must not be used on fire and smoke doors.



Product Ref:	Description	Mounting Position	Finishes
2420T	Closer with backcheck, slide in trimplate - adjustable power EN size 2 - 4	Door mounted or transom mounted	SE; SS; PS

Product Ref:	Accessories & Parts	Mounting Position	Finishes
2420.CS	Optional cushion stop	Mounted in the slide track	N/A
2420.HP	Optional mechanical hold-open kit	Mounted in the slide track	N/A
2420.IP	Intumescent pack - required for fire door applications		N/A

Please note: Cushion stop and mechanical hold-open cannot be used together