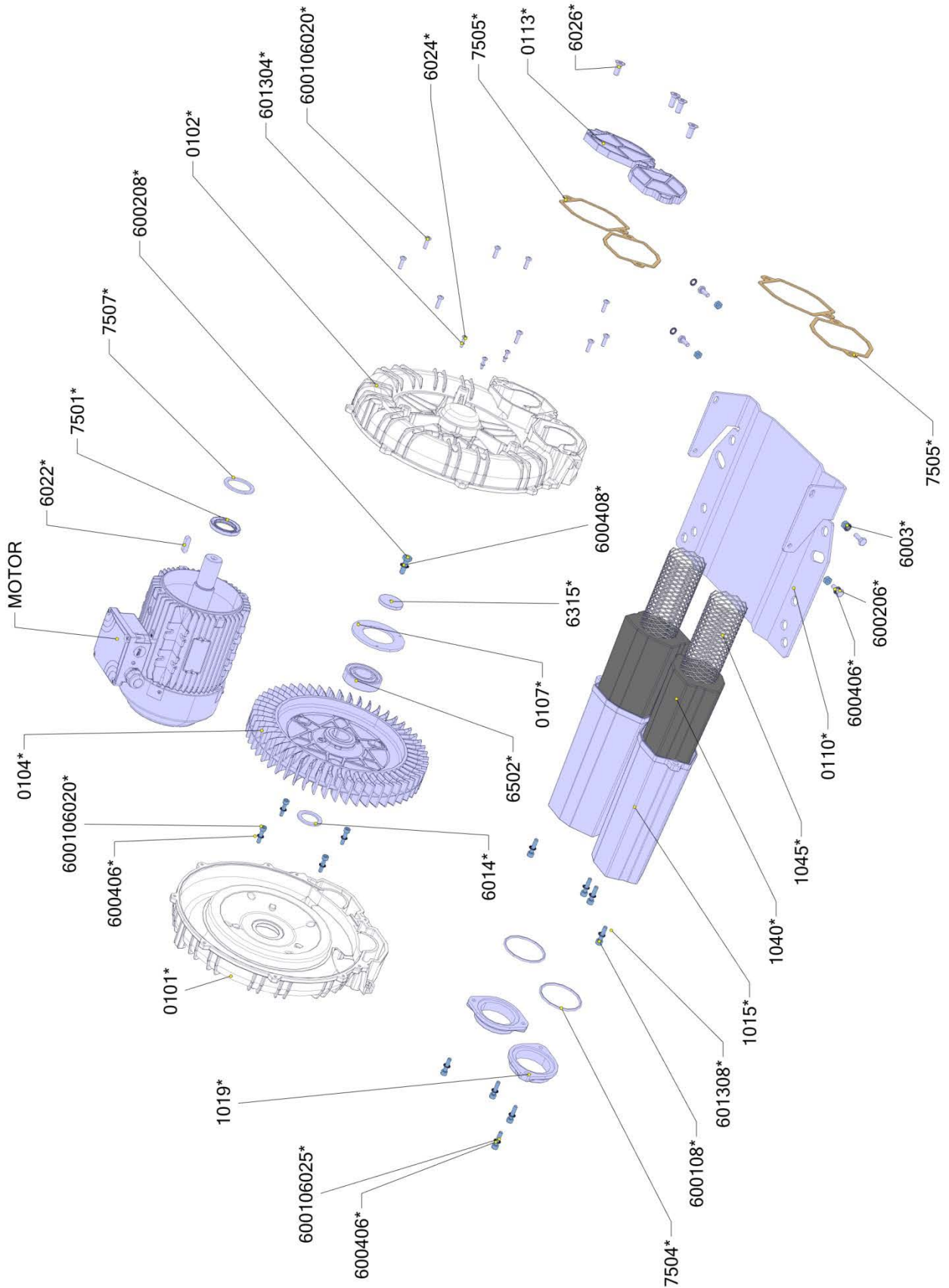
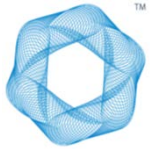


**K06-MS MOR**





**FPZ**  
BLOWER TECHNOLOGY

LISTA PEZZI SOFFIANTI  
BLOWER PART LIST

10/01/2014

**K06-MS MOR**

CODICE Code	Descrizione Description	Quantità Quantity		MATERIALE Type/Material
		GR.90	GR.100	
4073+0060 4073+0055 4073+0056	MOTORE ELETTRICO ELECTRIC MOTOR	X - -	- X X	2,2KW 230/400-50 VHZ 3KW 230/400-50 VHZ 4KW 230/400-50 VHZ
0107V6100100	COPERCH.CUSC. BEARING COVER	1	1	
0110K0621102	PIEDE FE P01 ZINCATO X K06-MS FOOT FE P01 ZINC. X K06-MS	1	1	
0113K0510004	FLANGIA CIECA ALLUMINIO NERVATA BLIND FLANGE ALLUMINIUM	2	2	
1015K0500004	FUSTO SILENZIATORE DN55 SILENCER DN55	2	2	
101950200004	FLANGIA GAS 2" FLANGE GAS 2"	2	2	
1040K0510700	PANNO FONOASSORBENTE X K05/K06 MS/TD - K07/K08 RMD SOUND INSUL. PANEL X K05/K06 MS/TD - K07/K08 RMD	2	2	
1045K0501101	RETINO SOSTEGNO SUPPORTING SCREEN	2	2	
631530100050	RONDELLA BLOCCAGGIO GIRANTE WASHER TO BLOCK	1	1	
650206206000	CUSCINETTO 6206 Z BEARING 6206 Z	1	1	
750400165851	ANELLO OR 165 O-RING 165	2	2	
7505K0550880	GUARNIZIONE PIANA BETAFLEX 72 GASKET BETAFLEX 72	4	4	
0101K0602004	CORPO K06 MS/TS/TD HOUSING K06 MS/TS/TD	1	1	
0102K0601004	COPERCHIO K06 MS/TS/TD/BPA COVER K06 MS/TS/TD/BPA	1	1	AL AC-46100DF
0104K0600004	GIRANTE K06 IMPELLER K06	1	1	AL AC-46100DF
601430422050	RONDELLA SS 30 X 42 X 2,5 WASHER SS 30 X 42 X 2,5	1	1	
602208035050	CHIAVETTA C40 8 X 7 X 35 KEY C40 8 X 7 X 35	1	1	
632508100101	GOLFARE FE42 ZN SP.4 MM HANGING EYE FE42 ZN SP.4 MM	1	1	
750135527855	ANELLO TENUTA MIM VITON 35 X 52 X 7 SEAL RING MIM VITON 35 X 52 X 7	1	1	
750740100876	ANELLO FELTRO FELT RING	1	1	
600408000066	RONDELLA ZIGRINATA SCHNORR S8 C60 ZINC. DIN 9250 WASHER SCHNORR S8 C60 ZINC. DIN 9250	1	1	CL.8.8 ACC.ALTA RESISTENZA
600208025081	VITE TE M8 X 25 UNI 5739 ACC. CL 8.8 ZN SCREW TE M8 X 25 UNI 5739 ACC. CL 8.8 ZN	1	1	CL.8.8 ACC.ALTA RESISTENZA
600106020081	VITE TCEI M6 X 20 UNI 5931 ACC. CL 8.8 ZN SCREW TCEI M6 X 20 UNI 5931 ACC. CL 8.8 ZN	13	13	



LISTA PEZZI SOFFIANTI  
BLOWER PART LIST

10/01/2014

K06-MS MOR

CODICE Code	Descrizione Description	Quantità Quantity		MATERIALE Type/Material
		GR.90	GR.100	
		600108025081	VITE TCEI M8 X 25 UNI 5931 ACC. CL 8.8 ZN SCREW TCEI M8 X 25 UNI 5931 ACC. CL 8.8 ZN	
601308100073	ROSETTA PIANA ALL. 8x16x1.5 WASHER ALL. 8x16x1.5	4	4	
600406000066	RONDELLA ZIGRINATA SCHNORR S6 C60 ZINC. DIN 9250 WASHER SCHNORR S6 C60 ZINC. DIN 9250	8	8	CL.8.8 ACC.ALTA RESISTENZA
602608020083	VITE TSEI M8 X 20 CL. 10.9 UNI 5933 DIN 7991 SCREW TSEI M8 X 20 CL. 10.9 UNI 5933 DIN 7991	4	4	
602404016081	VITE TCPH M4 x 16 CL.4.8 UNI 7687 DIN 7985 SCREW TCPH M4 x 16 CL.4.8 UNI 7687 DIN 7985	3	3	
601304000073	ROSETTA PIANA ALL. 4.3X7X0.8 WASHER ALL. 4.3X7X0.8	3	3	140HV ACC.MEDIA RESISTENZA
600206016081	VITE TE M6 X 16 UNI 5739 ACC. CL 8.8 ZN SCREW TE M6 X 16 UNI 5739 ACC. CL 8.8 ZN	4	4	C.L.8.8 ACC.ALTA RESISTENZA
600306200090	DADO ESAGONALE M6 UNI 5588 - ISO 4032 HEXAGONAL NUT M6 UNI 5588 - ISO 4032	4	4	C.L.8.8 ACC.ALTA RESISTENZA
604430421079	RONDELLA DI AGGIUSTAGGIO SEEGER PS 30X42X0.1 SHIM WASHER SEEGER PS 30X42X0.1	1	1	
600208014081	VITE TE M8 X 14 UNI 5739 ACC. CL 8.8 ZN SCREW TE M8 X 14 UNI 5739 ACC. CL 8.8 ZN	1	1	
600106025081	VITE TCEI M6 X 25 UNI 5931 ACC. CL 8.8 ZN SCREW TCEI M6 X 25 UNI 5931 ACC. CL 8.8 ZN	4	4	CL.8.8 ACC.ALTA RESISTENZA