

Always. Reliable. Tight.

hauff  
technik®



## Cable sealing system

Cable entry system KES-M150

## Cable entry system

KES-M150



Article code:  
KES-M150-D

### Features and technical data:

- pressure-tight ducting system up to 2.5 bar (outer pressure)
- high mechanical stability
- UV-resistant
- elastic connection with special system sleeves and straps made of stainless steel
- smooth inner surface for gentle cable feeding
- sealing of the insert cables with shrink-fit or rubber press-fit method
- low processing temperature up to 5 °C
- adaptation with common rigid cable ducts possible
- hoses with section lengths up to 25 m can be supplied (available on rolls)

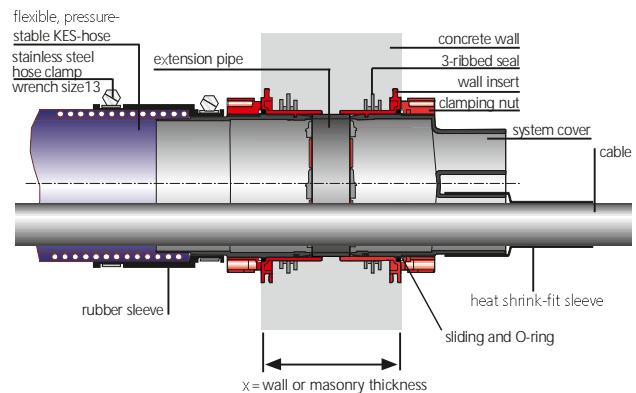
### The correct way to quote the article code:

e.g. KES-M150-D  
(for connecting to HSI 150 wall insert)

e.g. KES-M150-KVB  
(wall insert for holding system covers)

e.g. Hateflex 14150/8000  
spiral hose ID = 150 mm, length 8 m

### Cross-section of a concrete wall



### Cable entry systems. High stability – perfectly pressure-tight.

The KES-M150 cable entry system enables a pressure-tight cable duct connection up to 2.5 bar to the HSI 150 wall insert. A flexible, UV-resistant Hateflex spiral hose with a smooth inner surface is used as (empty) duct. The ends of the ducts are joined to the connection components via EPDM rubber sleeves. The cable entry systems are ideally suited to providing pressure-tight duct connections of buildings/manholes and for connections to be overbuilt at a later date, etc.

All common connection possibilities can be realised with the cable entry system KES-M150 employing the sleeve system. The unlimited compatibility of all components allows countless possible combinations – for any task and requirement.

## Article and system overview

Connection of cable entry systems or cable ducts



**Article code:**  
**KES-M150-D**  
For connecting to HSI 150  
wall inserts.



**Article code:**  
**KES-M150-R160**  
For connecting to core drill holes  
with standard press seals (projecting  
pipe length approx. 250 mm).



**Article code:**  
**KES-M150-D3/58 bzw. -D7/33**  
For feeding  
3 cables Ø 22 – 56 mm or  
7 cables Ø 12 – 31 mm.



**Article code:**  
**WE 160-z/d**  
Split interchangeable insert  
for sealing cable in the sleeve  
KES-M150-WE  
z = number of cables  
d = cable diameter



**Article code:**  
**KES-M150-WE**  
Sleeve for fitting with WE 160-z/d  
interchangeable insert  
(assemble before laying cables).



**Article code:**  
**KES-M150-KVB**  
Wall insert inclusive sealing  
cover for connecting HSI 150  
system cover. \*



**Article code:**  
**KES-M150-M110 or. -M125; -M160**  
For connecting rigid plastic  
pipes.



**Article code:**  
**KES-M150 HTV**  
Connection sleeve for hose  
extension



**Article code:**  
**Hateflex 14150/x**  
Spiral hose with a smooth  
inner surface, ID = 150 mm.  
x = length in mm (1,000 mm  
increments, max. 25,000 mm)

\* However the split system cover HSI 150-DG as well as HRD press seals are not suitable for the use in an assembly frame of the variant KES-M 150-KVB that is not embedded in concrete.

Other connection possibilities on request.

## Technical data

### Hateflex 14150



Article code:  
Hateflex 14150

#### Features and technical data:

- mechanically strong cable ducting hose
- smooth inner surface, abrasion-resistant, weather-resistant, UV-resistant, rot-resistant, dimensionally stable, resistant to brine and salt water, kink-resistant, flexible and resistant to many chemicals
- lengths from 1 m to 25 m available
- vacuum-resistant up to approx. 8m w.c.
- recommended minimum laying temperature up to +5 °C
- subjected to mechanical testing in accordance with DIN EN61386-1/22 (SKZ)

Clear width	Weight	Bending radius up +5 °C	Wall thickness	Tear resistance	Peak crush resistance	Roll length	Max. operating pressure (at 20 °C)	Article code
150 mm	5.5 kg/m	900 mm	8.4 mm	520 kg	115kg/10cm/10%	25 m	3 bar	14150

## Accessories



Article code:  
KES150-2x3-KA  
Spacer for clean, universal hose bundling.



Article code:  
KES-M Toolset  
Suitable for all types.  
Included:  
1 torque wrench 4-20 Nm  
1 extension 150 mm  
1 socket insert wrench size 13

Cable entries 150

## CABLE ENTRY SYSTEM

Cable entries

### KES-M 150 – CABLE ENTRY SYSTEM

Item	Article code	Article number	Figure
System cover for pressure-tight connection of spiral hose Hateflex 14150 to wall insert HSI 150	<b>KES-M 150-D</b>	2125810000	
Cement-coated wall sleeve (length 500 mm) with sleeve for floor entry of spiral hose Hateflex 14150	<b>KES-M150-ZVR 150/500</b>	2125502000	
Wall insert including closing cover for connecting the system cover HSI 150* to the end of spiral hose Hateflex 14150	<b>KES-M 150-KVB</b>	2125811000	

\* Other variants available, see [www.hauff-technik.de](http://www.hauff-technik.de)



Matching accessories such as installation fixture and attachment for installation of floor entry are to be found on page 26 onwards.



### SPIRAL HOSE WITH A SMOOTH INNER SURFACE FOR GENTLE CABLE FEEDING ID = 150 MM (STANDARD LENGTHS)

Length (m)	Article code	Article number	Figure
2	<b>Hateflex 14150/2000</b>	2130000200	
3	<b>Hateflex 14150/3000</b>	2130000300	
4	<b>Hateflex 14150/4000</b>	2130000400	
5	<b>Hateflex 14150/5000</b>	2130000500	
6	<b>Hateflex 14150/6000</b>	2130000600	
8	<b>Hateflex 14150/8000</b>	2130000800	
10	<b>Hateflex 14150/10000</b>	2130001000	
12	<b>Hateflex 14150/12000</b>	2130001200	
15	<b>Hateflex 14150/15000</b>	2130001500	
18	<b>Hateflex 14150/18000</b>	2130001800	
20	<b>Hateflex 14150/20000</b>	2130002000	
25	<b>Hateflex 14150/25000</b>	2130002500	

Custom lengths on request.



Matching accessories such as pipe connection and connection collars or the installation toolset are to be found on page 26 onwards.



# Cable entries 150

## ACCESSORIES

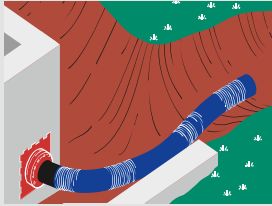
### CABLE ENTRY SYSTEMS – GENERAL

Item	Article code	Article number	Figure
Connection sleeve to connect rigid cable ducts OD = 110 mm* to spiral hose Hateflex 14150	<b>KES-M 150-M 110</b>	2125814000	-
Connection sleeve to connect rigid cable ducts OD = 125 mm* to spiral hose Hateflex 14150	<b>KES-M 150-M 125</b>	2125813000	-
Connection sleeve for hose extension/connection Hateflex 14150	<b>KES-M 150 HTV</b>	2128020000	
Connection sleeve to connect rigid cable ducts OD = 160 mm* to spiral hose Hateflex 14150	<b>KES-M 150-M 160</b>	2125812000	
1 set of clip rings to stabilize the corrugated pipe within the sleeve (please specify pipe type and manufacturer in your order)	<b>CR 110</b>	for Kabuflex: 1630001730	
1 set of clip rings to stabilize the corrugated pipe within the sleeve (please specify pipe type and manufacturer in your order)	<b>CR 125</b>	for Kabuflex: 1630001750	
1 set of clip rings to stabilize the corrugated pipe within the sleeve (please specify pipe type and manufacturer in your order)	<b>CR 160</b>	for Kabuflex: 1630001770	
Rigid pipe section 440 mm projecting and OD = 160 mm with sleeve for connection to spiral hose Hateflex 14150 (tight wall sealing in core drills in combination with an HRD press seal).	<b>KES-M 150-R 160</b>	2125818000	
Spacer e.g. 2 x 3 to attach and position hose blocks with Hateflex 14150 (other variants available)	<b>KES 150-2x3 KA</b>	2101090200	
Toolset for pressure-tight strap assembly, comprising 1 torque 4-20 Nm, ¼ inch, 1 extension 150 mm, ¼ inch, 1 socket for hexagon spanner SW 13, ¼ inch, 1 socket for hexagon spanner SW 8, ¼ inch	<b>KES-M-W</b>	2128030000	

\* Additional clip rings CR are necessary to connect corrugated pipes.  
In addition 2 x profile sleeves from the corrugated pipe manufacturer are required for each pipe connection.

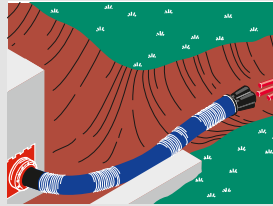
## Article and system overview

### KES-M150 connection variations and example applications



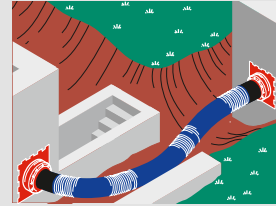
#### **KES-M150-D with spiral hose Hateflex 14150**

System cover for connecting to wall inserts HSI 150.



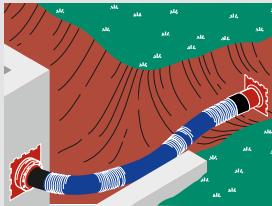
#### **KES-M150-D with spiral hose Hateflex 14150 and KES-M150-D3/58 or -D7/33**

System cover for connecting to HSI 150 wall inserts and sealing cable at the end of the spiral hose.



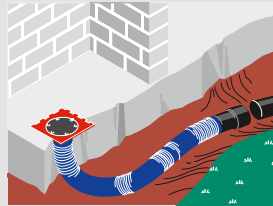
#### **KES-M150-D with spiral hose Hateflex 14150 and KES-M150-D**

For directly connecting e.g. two buildings with already concreted HSI 150 wall inserts.



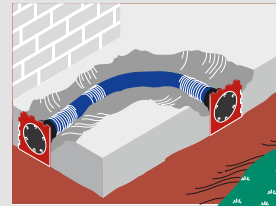
#### **KES-M150-D with spiral hose Hateflex 14150 and KES-M150-KVB**

System cover for connecting to HSI 150 wall inserts and additional connection point for holding system covers.



#### **KES-M150-KVB with spiral hose Hateflex 14150 with KES-M150-M110 and -M125, -M160**

For concreting and connecting pipes.



#### **KES-M150-KVB with spiral hose Hateflex 14150 and KES-M150-KVB**

For concreting.



Practical example



Practical example

TIGHT CABLE PIPE BUILDINGENTRY ALWAYS RELIABLE ALWAYS TIGHT CABLE PIPE BUILDING  
DINGENTRY ALWAYS RELIABLE ALWAYS TIGHT CABLE PIPE BUILDINGENTRY ALWAYS RELIA  
ABLE ALWAYS TIGHT CABLE PIPE BUILDINGENTRY ALWAYS RELIABLE ALWAYS TIGHT CABLE  
BUILDINGENTRY ALWAYS RELIABLE ALWAYS TIGHT CABLE PIPE BUILDINGENTRY ALWAYS P  
ABLE PIPE BUILDINGENTRY ALWAYS RELIABLE ALWAYS TIGHT CABLE PIPE BUILDINGENTRY  
TRY ALWAYS RELIABLE ALWAYS TIGHT CABLE PIPE BUILDINGENTRY ALWAYS RELIABLE ALW  
LWAYS TIGHT CABLE PIPE BUILDINGENTRY ALWAYS RELIABLE ALWAYS TIGHT CABLE PIPE B  
BUILDINGENTRY ALWAYS RELIABLE ALWAYS TIGHT CABLE PIPE BUILDINGENTRY ALWAYS P  
AYS RELIABLE ALWAYS TIGHT CABLE PIPE BUILDINGENTRY ALWAYS RELIABLE ALWAYS TIG  
LE ALWAYS TIGHT CABLE PIPE BUILDINGENTRY ALWAYS RELIABLE ALWAYS TIGHT CABLE P  
LE PIPE BUILDINGENTRY ALWAYS RELIABLE ALWAYS TIGHT CABLE PIPE BUILDINGENTRY AL  
ALWAYS RELIABLE ALWAYS TIGHT CABLE PIPE BUILDINGENTRY ALWAYS RELIABLE ALWAYS  
S TIGHT CABLE PIPE BUILDINGENTRY ALWAYS RELIABLE ALWAYS TIGHT CABLE PIPE BUI  
DINGENTRY ALWAYS RELIABLE ALWAYS TIGHT CABLE PIPE BUILDINGENTRY ALWAYS RELIAB  
CABLE PIPE BUILDINGENTRY ALWAYS RELIABLE ALWAYS TIGHT CABLE PIPE BUILDINGENT  
NTRY ALWAYS RELIABLE ALWAYS TIGHT CABLE PIPE BUILDINGENTRY ALWAYS RELIABLE A

# ALWAYS HAUFF