

# IVECO DAILY

# 236 F5

### CODICE DI ORDINAZIONE / ORDERING CODE

236 X 5 H XX D X 0

VARIANTI/VOLTS

1 = 12 VOLT/VOLTS  
2 = 24 VOLT/VOLTS

ROTAZIONE/ROTATION  
D = DESTRO/CLOCKWISE

CILINDRATA/DISPLACEMENT

TIPO DI POMPA/PUMP TYPE  
H = BPC GHISA/CAST IRON

TIPO DI PULEGGIA/PULLEY TYPE  
5 = 5 GOLE/GROOVES

MONTAGGIO

F = FLANGIA/FLANGE

K = KIT CON STAFFA MOTORE E CINGHIA/KIT WITH MOTOR BRACKET AND BELT

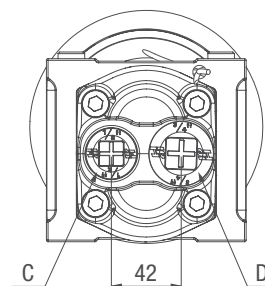
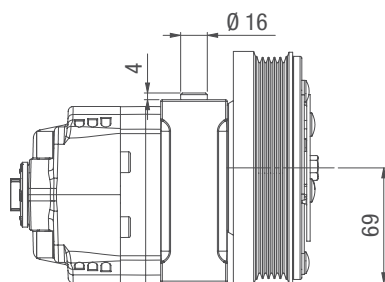
ELETTROFRIZIONE CON POMPA/MAGNETIC CLUTCH WITH PUMP



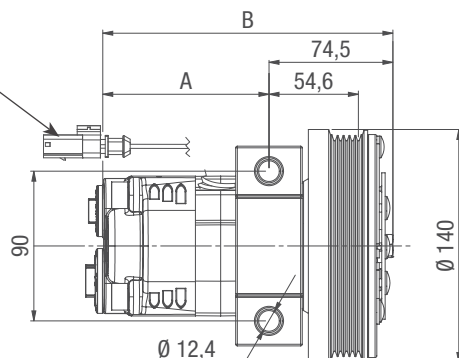
**New**

### CARATTERISTICHE E DATI TECNICI / SPECIFICATIONS AND TECHNICAL DATA

CODICE ELETTROFRIZIONE MAGNETIC CLUTCH CODE	CILINDRATA DISPLACEMENT cm <sup>3</sup> /rev.	TENSIONE DI ALIMENTAZIONE EXCITING VOLTAGE Volt	ASSORBIMENTO ABSORPTION Amp.	CONSUMO ENERGETICO POWER CONSUMPTION Watt (max.)	A mm	B mm	C MANDATA OUTLET	D ASPIRAZIONE INLET	PESO WEIGHT kg
236 X 5 H08 D X 0	8,3	12/24	3,7	47	100	174,5	1/2" G	3/4" G	8
236 X 5 H11 D X 0	11,5				105	179,5	1/2" G	3/4" G	8,2
236 X 5 H16 D X 0	16,4				115	189,5	1/2" G	3/4" G	8,6
236 X 5 H22 D X 0	20,5				121	195,5	1/2" G	3/4" G	8,9
236 X 5 H25 D X 0	25,3				125	199,5	1/2" G	3/4" G	9,2



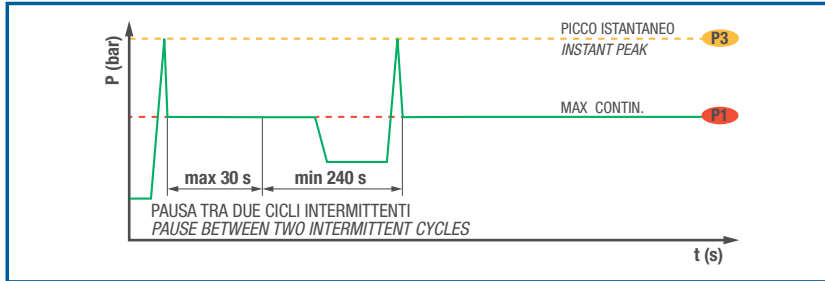
CONNETTORE TIPO AMP  
SUPERSEAL 1.5 2 VIE  
CONNECTOR TYPE AMP  
SUPERSEAL 1.5 2 WAY



## Elettrofrizione con pompa / Magnetic clutch with pump

### DATI TECNICI / TECHNICAL DATA

#### ESEMPIO CICLI LAVORO / EXAMPLE OF WORKING CYCLES



<b>Pressione d'aspirazione:</b> <i>Inlet pressure:</i>	0.7 ÷ 1.5 bar (assoluti/absolute)
<b>Campo viscosità lavoro:</b> <i>Operating viscosity range:</i>	12 ÷ 100 cSt
<b>Temperatura fluido °C (t):</b> <i>Fluid temperature °C (t):</i>	-10° + 80° C

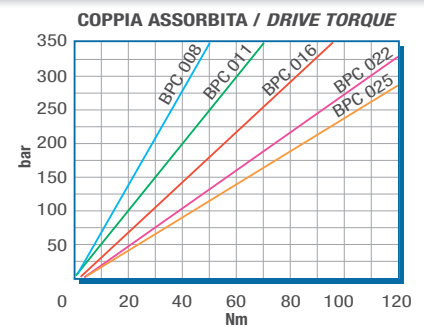
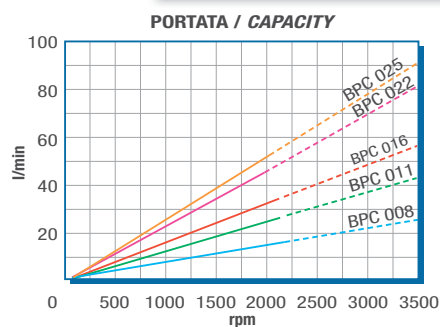
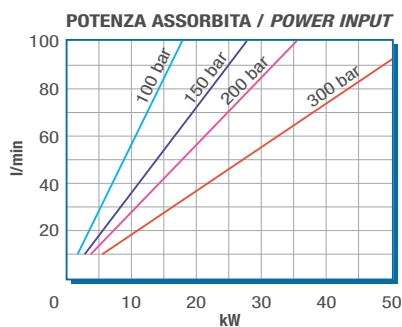
Pressione Lavoro <i>Working Press.</i>	P2	Contaminazione / <i>Contamination</i>		Filtro / <i>Filter</i> βx = 75
		NAS 1638	ISO 4406	
≤ 200 bar		12	21/18	40 μm
≥ 200 bar		11	20/17	25 μm

◀ **FILTRAZIONE CONSIGLIATA (ritorno o mandata)**  
*RECOMMENDED FILTERING (return or outlet)*

TIPO / <i>TYPE</i>			BPC 008	BPC 011	BPC 016	BPC 022	BPC 025
Cilindrata <i>Displacement</i>	Vg	cm <sup>3</sup> /n <i>cm<sup>3</sup>/rev.</i>	8,3	11,5	16,4	20,5	25,3
Pressione massima continua <i>Max continuous operating pressure</i>	P1	bar	280	280	280	230	180
Pressione massima di picco <i>Max peak pressure</i>	(≤ 0.1 s) P3		310	310	310	260	220
Velocità massima intermittente <i>Max intermittent speed</i>	(P ≤ 20 bar)	n3	2700				
Velocità massima continua <i>Max continuous speed</i>	(≤ P1)	n1	2200	2200	2200	2000	2000
Velocità minima intermittente <i>Min intermittent speed</i>	(≤ P1 x 0.5) (max 30 s)	n4	450				
Coppia massima ammissibile <i>Max permissible torque</i>		Nm	35,7	51,3	73,1	78	78

### DIAGRAMMI / *DIAGRAMS*

RILIEVI ESEGUITI CON OLIO ISO VG 46 A 50° C (ν = 30 cSt)  
*THE ABOVE SPECIFICATIONS REFER TO OIL TYPE ISO VG 46 AT 50° C (ν = 30 cSt)*



### ROTAZIONE POMPA / *PUMP ROTATION*

