



- Flexible configuration due to pushbutton, mushroom pushbutton, mushroom stay-put button, mushroom stay-put button with key lock, key-operated button, key-operated switch
- Easy assembly thanks to single-hole mounting (D 30)
- Codable "latching", "spring return", "key not removable" functions
- Spring clamp terminals with connection chamber

WebCode **8003A**



R. STAHL Series 8003 control buttons and/or switches for panel mounting switch load, control and signal circuits up to 6 A. Depending on the type, they are complete or incomplete explosion-protected equipment with corresponding requirements for installation. As an option, various actuators are available.






	ATEX / IECEx					
Zone	0	1	2	20	21	22
Installation in		•	•		•	•

	NEC 505 Class I			NEC 506		
Zone	0	1	2	20	21	22
Installation in		•	•			

	NEC 500					
	Class I		Class II		Class III	
Division	1	2	1	2	1	2
Installation in		•		•		

Selection Table						
Actuator	Key-operated switch actuator With key-operated switch actuator					
Number of switching positions	2					
Contact material	Silver-nickel					
Silicone-free	Yes					
Ambient temperature	-20 °C ... +60 °C					
Certificates	ATEX (PTB), Canada / USA (UL), China (CQST), IECEx (PTB), India (PESO), Korea (KGS)					
Figure	Number of NCs	Number of NOs	Product Type	Art. No.	Weight kg	
	1	1	8003/111-008-2-r-MS1	127240 ▲	0.230	
	–	2	8003/131-008-2-r-MS1	127244	0.220	
Actuator	Key-operated switch actuator With key-operated switch actuator					
Number of switching positions	2					
Contact material	Silver-nickel					
Silicone-free	Yes					
Ambient temperature	-20 °C ... +60 °C					
Certificates	Canada / USA (UL), China (CQST), IECEx (PTB), India (PESO), Korea (KGS)					
Figure	Number of NCs	Number of NOs	Product Type	Art. No.	Weight kg	
	1	1	8003/111-008-2-r-KMS1	204226	0.250	

Selection Table






Actuator		Mushroom pushbutton			
Contact material		Silver-nickel			
Silicone-free		Yes			
Ambient temperature		-20 °C ... +60 °C			
Certificates		ATEX (PTB), Canada / USA (UL), China (CQST), IECEx (PTB), India (PESO), Korea (KGS)			
Figure	Number of NCs	Number of NOs	Product Type	Art. No.	Weight kg
	1	1	8003/111-003	127183	0.140
Actuator		Mushroom stay-put button			
Contact material		Silver-nickel			
Silicone-free		No			
Ambient temperature		-55 °C ... +60 °C			
Certificates		ATEX (PTB), Canada / USA (UL), China (CQST), IECEx (PTB), India (PESO), Korea (KGS)			
Figure	Number of NCs	Number of NOs	Product Type	Art. No.	Weight kg
	1	1	8003/111-012S	257236	0.125
	2	–	8003/121-012S	257237	0.125
	–	2	8003/131-012S	257238	0.125
Actuator		Mushroom stay-put button EM-STOP			
Contact material		Silver-nickel			
Silicone-free		No			
Ambient temperature		-55 °C ... +60 °C			
Certificates		ATEX (PTB), Canada / USA (UL), China (CQST), IECEx (PTB), India (PESO), Korea (KGS)			
Figure	Number of NCs	Number of NOs	Product Type	Art. No.	Weight kg
	1	1	8003/111-010S	217915	0.125
	2	–	8003/121-010S	217916 ▲	0.125
	–	2	8003/131-010S	217917	0.125
Actuator		Mushroom stay-put button EM-STOP, 55 mm			
Contact material		Silver-nickel			
Silicone-free		No			
Ambient temperature		-55 °C ... +60 °C			
Certificates		ATEX (PTB), Canada / USA (UL), China (CQST), IECEx (PTB), India (PESO), Korea (KGS)			
Figure	Number of NCs	Number of NOs	Product Type	Art. No.	Weight kg
	1	1	8003/111-015S	217918	0.145
	2	–	8003/121-015S	217919	0.145
Actuator		Mushroom stay-put button With key-operated switch actuator EM-STOP			
Contact material		Silver-nickel			
Silicone-free		No			
Ambient temperature		-55 °C ... +60 °C			
Certificates		ATEX (PTB), Canada / USA (UL), China (CQST), IECEx (PTB), India (PESO), Korea (KGS)			
Figure	Number of NCs	Number of NOs	Product Type	Art. No.	Weight kg
	1	1	8003/111-009S-MS1	217911	0.140

Control Buttons / Switches for Panel Mounting


Series 8003 Spring Clamp Terminals with Connection Chamber

STAHL

E4

Selection Table					
Actuator		Pushbutton			
Contact material		Gold-plated			
Silicone-free		Yes			
Ambient temperature		-20 °C ... +60 °C			
Certificates		ATEX (PTB), Canada / USA (UL), China (CQST), IECEx (PTB), India (PESO), Korea (KGS)			
Figure	Number of NCs	Number of NOs	Product Type	Art. No.	Weight kg
	1	1	8003/111-001-AU	213501	0.125
Actuator		Pushbutton			
Contact material		Silver-nickel			
Silicone-free		No			
Ambient temperature		-55 °C ... +60 °C			
Certificates		ATEX (PTB), Canada / USA (UL), China (CQST), IECEx (PTB), India (PESO), Korea (KGS)			
Figure	Number of NCs	Number of NOs	Product Type	Art. No.	Weight kg
	1	1	8003/111-001S	217834	0.140
	2	–	8003/121-001S	217837	0.140
	–	2	8003/131-001S	217839	0.140
Actuator		Pushbutton			
Contact material		Silver-nickel			
Silicone-free		Yes			
Ambient temperature		-20 °C ... +60 °C			
Certificates		ATEX (PTB), Canada / USA (UL), China (CQST), IECEx (PTB), India (PESO), Korea (KGS)			
Figure	Number of NCs	Number of NOs	Product Type	Art. No.	Weight kg
	1	1	8003/111-001	126993 ▲	0.140
	2	–	8003/121-001	127048	0.140
	–	2	8003/131-001	127125 ▲	0.140
Actuator		Rotary actuator, small Not padlockable			
Number of switching positions		2			
Contact material		Silver-nickel			
Silicone-free		Yes			
Ambient temperature		-20 °C ... +60 °C			
Certificates		ATEX (PTB), Canada / USA (UL), China (CQST), IECEx (PTB), India (PESO), Korea (KGS)			
Figure	Number of NCs	Number of NOs	Product Type	Art. No.	Weight kg
	1	1	8003/111-726-2-r	213500	0.125
		1	8003/141-726-2-r	213549	0.125
	–	2	8003/131-726-2-r	213534 ▲	0.125
Actuator		Rotary actuator, small Not padlockable			
Number of switching positions		3			
Contact material		Silver-nickel			
Silicone-free		Yes			
Ambient temperature		-20 °C ... +60 °C			
Certificates		ATEX (PTB), Canada / USA (UL), China (CQST), IECEx (PTB), India (PESO), Korea (KGS)			
Figure	Number of NCs	Number of NOs	Product Type	Art. No.	Weight kg
	–	2	8003/131-726-3-rr	213535	0.125
		2	8003/131-726-3-tt	213537	0.125

Selection Table

Actuator	Rotary actuator, small Padlockable				
Number of switching positions	2				
Contact material	Silver-nickel				
Silicone-free	Yes				
Ambient temperature	-20 °C ... +60 °C				
Certificates	ATEX (PTB), Canada / USA (UL), China (CQST), IECEx (PTB), India (PESO), Korea (KGS)				
Figure	Number of NCs	Number of NOs	Product Type	Art. No.	Weight kg
	1	1	8003/111-727-2-r	218567	0.125
	-	2	8003/131-727-2-r	213538	0.125
Actuator	Rotary actuator, small Padlockable				
Number of switching positions	3				
Contact material	Silver-nickel				
Silicone-free	Yes				
Ambient temperature	-20 °C ... +60 °C				
Certificates	ATEX (PTB), Canada / USA (UL), China (CQST), IECEx (PTB), India (PESO), Korea (KGS)				
Figure	Number of NCs	Number of NOs	Product Type	Art. No.	Weight kg
	-	2	8003/131-727-3-rr	213539	0.125
Actuator	Selector switch				
Number of switching positions	2				
Contact material	Silver-nickel				
Silicone-free	Yes				
Ambient temperature	-20 °C ... +60 °C				
Certificates	ATEX (PTB), Canada / USA (UL), China (CQST), IECEx (PTB), India (PESO), Korea (KGS)				
Figure	Number of NCs	Number of NOs	Product Type	Art. No.	Weight kg
	1	1	8003/111-005	127141	0.125

- yellow label for EM-STOP function is enclosed
- plates must be ordered separately; see accessories
- key-operated switch with "spring-return" and/or "key not removable" on request
- versions with other locking cylinders on request
- key switches type 8003/1..-008- and control switches type 8003/1..-726-3 are codable ("latching", "spring-return", "key removable")

Technical Data

Explosion Protection	
IECEX gas explosion protection	Ex db eb IIC T6 Gb
IECEX dust explosion protection	Ex tb IIIC T80 °C Db
ATEX gas explosion protection	Ⓔ II 2 G Ex db eb IIC T6 Gb
ATEX dust explosion protection	Ⓔ II 2 D Ex tb IIIC T80 °C Db
Notes	Product label may vary. Series devices have certification according to ATEX and IECEx.
Electrical Data	
Rated operational voltage AC	500 V
Mechanical Data	
Enclosure protection type (IP) front	IP66
Enclosure protection type (IP) rear	IP65
Conductor cross-section min.	0.75 mm ²
Conductor cross-section max.	1.5 mm ²

Control Buttons / Switches for Panel Mounting

Series 8003 Spring Clamp Terminals with Connection Chamber

STAHL

E4

Technical Data

Components	
Cable entries	1 x M16 x 1.5
Entry type	Standard 8161, moulded material

Accessories

Figure	Description	Art. No.	Weight kg
Symbol label for pushbutton and selector switch			
	Colour: green Text: ON	155671	0.001
	Colour: black Blank label without text	155905 ▲	0.001
	Colour: blue Blank label without text	155911 ▲	0.001
	Colour: blue Text: RESET	155894	0.001
	Colour: green Blank label without text	155901 ▲	0.001
	Colour: red Blank label without text	155897 ▲	0.001
	Colour: white Blank label without text	155908 ▲	0.001
	Colour: yellow Blank label without text	155914 ▲	0.001
	Colour: black Text: O	155783	0.001
	Colour: black Symbol: Arrow	155761	0.001
	Colour: black Text: Aus	155806	0.001

Accessories

Figure	Description	Art. No.	Weight kg
Symbol label for pushbutton and selector switch			
	Colour: black Text: EIN	155862	0.001
	Colour: black Text: I	155846	0.001
	Colour: black Text: I O	155771 ▲	0.001
	Colour: black Text: II	155854	0.001
	Colour: black Text: STOP	155795	0.001
	Colour: green Text: I	155689 ▲	0.001
	Colour: green Text: II	155706	0.001
	Colour: red Text: O	155596 ▲	0.001
	Colour: red Text: Aus	155634	0.001
	Colour: red Text: OFF	155654	0.001
	Colour: white Text: I	155892	0.001

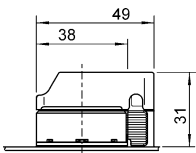
Accessories

Figure	Description	Art. No.	Weight kg
Label mount			
	Label mount, size 1, without symbol label Text: 1 line for actuators to fit \varnothing 30.5 mm holes	155632	0.001
	Label mount, size 2, without symbol label Text: 1 or 2 lines for actuators to fit \varnothing 30.5 mm holes	155687	0.002
	Label mount, size 3, without symbol label Text: 1, 2 or 3 lines for actuators to fit \varnothing 30.5 mm holes	155844	0.002

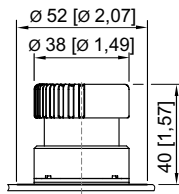
Spare Parts

Figure	Description	Art. No.	Weight kg
Spare key			
	MS1 locking device	107109 ▲	0.008
Closure part			
	for closing of unused mounting holes \varnothing 30.5 mm	155329	0.016

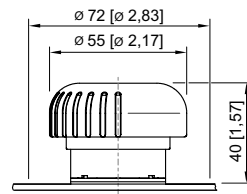
Dimensional Drawings (All Dimensions in mm [inches]) – Subject to Alterations



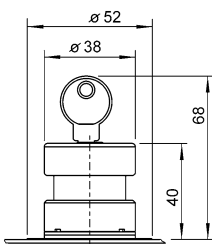
Control switch, one-time padlockable



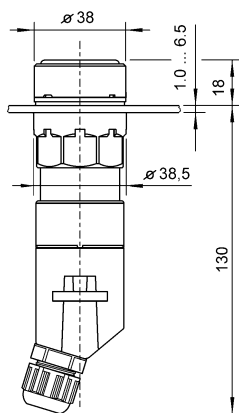
Mushroom stay-put button \varnothing 38 mm



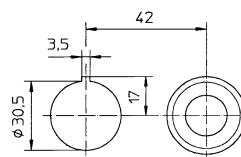
Mushroom stay-put button \varnothing 55 mm



Key-stay button

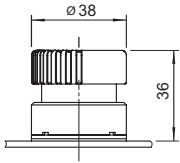


Pushbutton with connection area

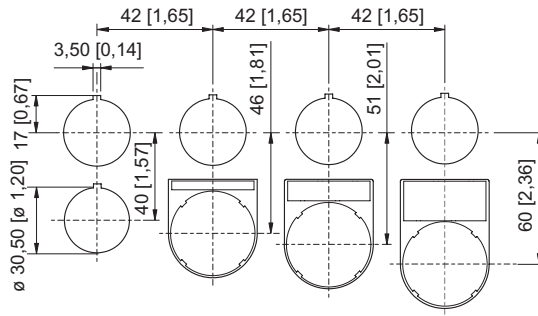


Drilling pattern: for aligning several devices \varnothing 38 mm, in a panel

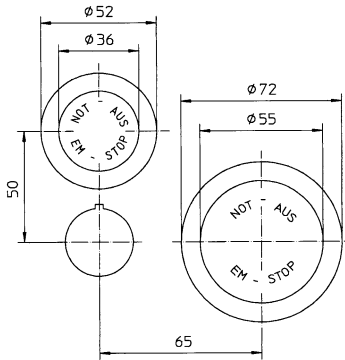
E4



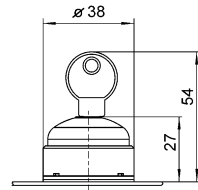
Mushroom button



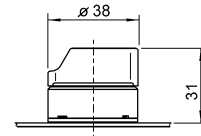
Standard cut-out with / without front label



Standard cut-out for EMERGENCY-STOP button



Key switch



Control switch, not padlockable