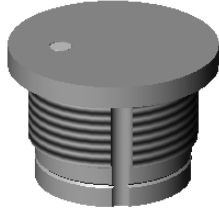


Scale 1:1



1 SPECIFICATIONS:

HOUSING MATL.: ALUMINIUM 6061 T651  
 CONNECTION: 5 PVC WIRES 24 AWG  
 SWITCHING VOLTAGE: 1-24 V AC/DC  
 SWITCHING CURRENT: 0.2 A  
 SWITCH RESISTANCE "ON": <20 Ohm  
 SWITCH RESISTANCE "OFF": >5 MOhm  
 ACTUATION FORCE: 3-5 N  
 MAKE IMPULSE TIME: 125-300 mSEC.  
 OPER. TEMP.: -40 °C TO 70 °C  
 STOR. TEMP.: -40 °C TO 85 °C  
 LED: OPERATING VOLTAGE 24V DC,  
 CURRENT CONSUMPTION 2x10mA max.

2 FINISH

ANODISE THICKNESS: 6-10 μ  
 ANODISE COLOR: NATURAL

