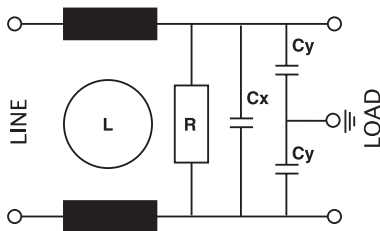




YT was created to use it in household appliances.

La serie YT è stata studiata prevalentemente per destinarla all'utilizzo elettrodomestico.

**Circuit diagram**



**Technical Specifications:**

**Manufacture**

Plastic case, internal components sealed with self-extinguishing resin Vo

**Connections**

Faston 6.3 x 0.8 mm or flexible leads

**Electrical specifications:**

<b>Rated voltage (Vr)</b>	125/250 Vac at 50/60 Hz
<b>Rated current (Ir)*</b>	referred to room temp.= 40°C
<b>Voltage test (2s.)</b>	line to ground 2250 Vdc or 1800 Vac line to line 1450 Vdc
<b>Climatic category</b>	HPF (25/085/21) -25°C to +85°C

**Caratteristiche tecniche:**

**Costruzione**

Custodia plastica, componenti interni sigillati con resina autoestinguente Vo

**Terminali**

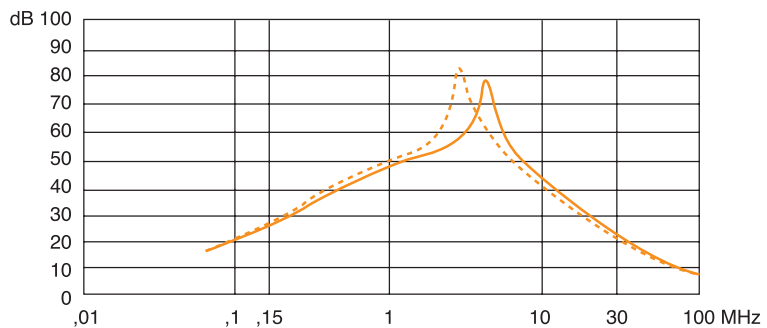
Faston 6.3 x 0.8 mm. o cavi flessibili

**Caratteristiche elettriche:**

<b>Tensione nominale (Vr)</b>	125/250 Vac a 50/60 Hz
<b>Corrente nominale (Ir)*</b>	riferita ad una temp.di 40°C
<b>Tensione di prova (2s.)</b>	linea e massa 2250 Vdc o 1800 Vac linea e linea 1450 Vdc
<b>Categoria climatica</b>	HPF (25/085/21) -25°C to +85°C

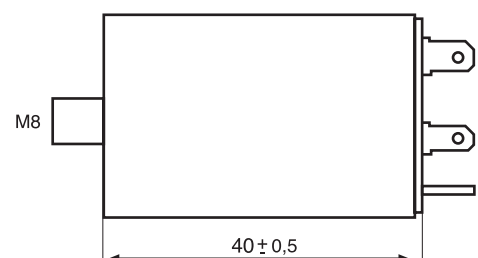
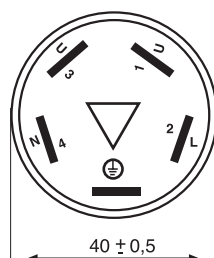
Code	IR(A)*	Cx(µF)	Cy(pF)	L(mH)	R(MΩ)	DxX (mm)	Leakage (mA)
YT16TA1	16	0.10	15000	1	1	40 x 40	2.5
YT16TA2	16	0.33	27000	1	1	40 x 40	3.2
YT16TA3	16	0.47	10000	1	1	40 x 40	2.3
YT16TA4	16	0.47	27000	1	0.68	40 x 40	3.2
YT16TA5	16	0.47	10000	1	0.68	40 x 40	2.3
YT10TA1	10	0.47	10000	1	0.68	40 x 40	2.3
YT10TA2	10	0.47	2200	1	1	40 x 40	0.6

Symmetrical (Line to line)



— CY = 10.000 - 15.000 pF  
 - - - CY = 27000 pF

**Dimensions**



**APPROVALS**

