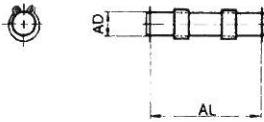
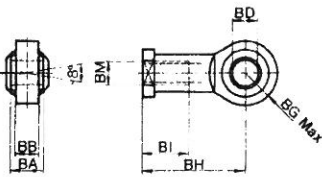


ADDITIONAL MOUNTINGS



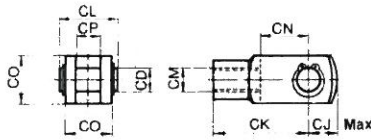
Pivot A

NS	32	40	50	63	80	100	125	160	200	250	320
A ex. A-32-1045 = ADAL											
P + M	1046	1253	1261	1671	1691	20111	25131	30171	30171	40201	45221
B/R + U	1026	1228	1232	1640	1652	2060	2570	3086	3086	40111	45123
B/R + Z	1035	1241	1252	1654	1668	2080	2590	30107	30107	40133	45165
P + Z	1046	1253	1263	1673	1693	20115	25122				
M + Z	1066	1277	1291	16104	16133	20165	25182	30234	30234	40284	45324



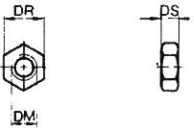
Piston rod end (spherical) eye bearing B (ISO 8139)

NS	32	40	50	63	80	100	125	160	200	250	320
BA h12	14	16	21	21	25	25	37	43	43	49	60
BB	10,5	12	15	15	18	18	25	30	30	35	40
BD H9	10	12	16	16	20	20	30	35	35	40	50
BG Max	14	16	21	21	25	25	35	40	40	45	58
BH	43	50	64	64	77	77	110	125	125	142	160
BI	20	22	30	30	36	36	51	56	56	60	65
BM	M10x1,25	M12x1,25	M16x1,5	M16x1,5	M20x1,5	M20x1,5	M27x2	M36x2	M36x2	M42x2	M48x2



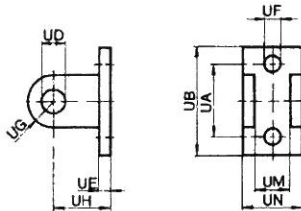
Piston rod clevis assembly C (ISO 8140)

NS	32	40	50	63	80	100	125	160	200	250	320
CD H9	10	12	16	16	20	20	30	35	35	40	50
CJ Max	16	19	25	25	32	32	45	57	57	77	88
CK	40	48	64	64	80	80	110	144	144	168	192
CL	26	31	39	39	49	49	65	84	84	95	110
CM	M10x1,25	M12x1,25	M16x1,5	M16x1,5	M20x1,5	M20x1,5	M27x2	M36x2	M36x2	M42x2	M48x2
CO	20	24	32	32	40	40	55	70	70	85	96
CN	20	24	32	32	40	40	54	72	72	84	96
CP	10	12	16	16	20	20	30	35	35	40	50



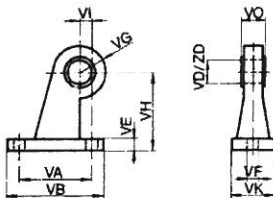
Piston rod nut D

NS	32	40	50	63	80	100	125	160	200	250	320
DM	M10x1,25	M12x1,25	M16x1,5	M16x1,5	M20x1,5	M20x1,5	M27x2	M36x2	M36x2	M42x2	M48x2
DR	17	19	24	24	30	30	41	55	55	65	75
DS	5	6	8	8	10	10	12	18	18	21	24



Clevis foot U (for front or rear hinge)

NS	32	40	50	63	80	100	125	160	200	250	320
UA	30	38	46	58	70	88	108	138	170	212	275
UB	45	55	64	79	94	118	145	182	215	265	340
UD	10	12	12	16	16	20	25	30	30	40	45
UE	6	8	5	10	12	14	18	14	19	22	23
UF	7	9	9	12	14	18	22	26	26	40	38
UG	11	15	15	19	19	24	30	33	33	40	45
UH	24	27	30	36	40	45	55	65	70	80	90
UM	15	17	22	22	26	26	38	44	44	50	61
UN	25	28	32	40	50	60	70	90	90	110	120



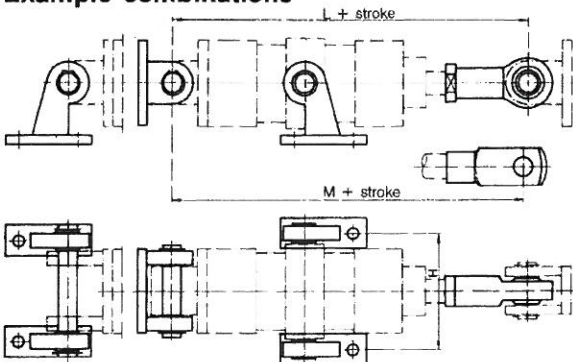
Bracket V (for central trunnion T)

NS	32	40	50	63	80	100	125	160	200	250	320
VA	30	38	46	58	70	88	108	138	170	212	275
VB	45	55	64	79	94	118	145	182	215	265	340
VD H9	12	16	16	20	20	25	25	32	32	40	50
VE	7	9	8	10	11	13	13	18	18	18	23
VF	7	9	9	12	14	18	22	26	26	32	38
VG	13	15	17	21	21	25	28	33	33	40	45
VH	32	36	45	50	63	71	90	115	135	165	200
VI	7	9	10	12	14	17	21	25	25	30	35
VK	16	18	25	28	34	40	45	60	60	60	70
VO	10	15	15	20	21	27	25	30	30	40	50

Bracket Z, (for mounting M, P, R, B)

NS	32	40	50	63	80	100	125	160	200	250	320
ZD	10	12	12	16	16	20	25	30	30	40	45
ZO	10	12	15	16	21	27	25	30	30	40	50

Example combinations



Dimensions (with mountings)

NS	32	40	50	63	80	100	125	160	200	250	320
H	62	80	92	112	132	160	187	232	282	362	452
L Min	190	216	242	262	297	317	397	458	478	538	604
M Min	187	214	242	262	300	320	397	477	497	564	636