

USA

Vibrator Motors

>> Specifications and Dimensions

E

Motovibradores

>> Especificaciones y Dimensiones

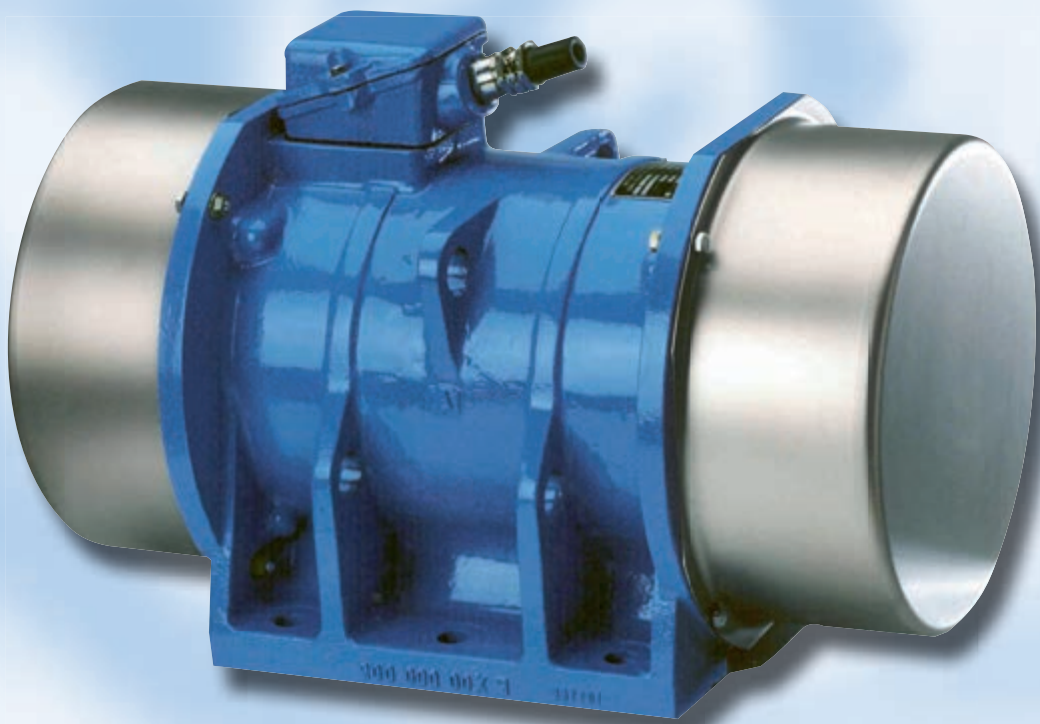
F

Moteurs vibrants

>> Spécifications et dimensions

60 Hz

X-Type



Vimarc®

» Specifications and Dimensions

4 pole vibrator motors (1,750 rpm) | Motores de vibración de 4 polos (1,750 rpm) | moteurs vibrants 4 pôle (1,750 rpm)

Working Moment Torque Couple in-lb	Centrifugal Force Fuerza Centrifuga Force centrifuge Pounds	Horse Power Caballo de Fuerza Cheval-vapeur HP	Power Consumption Potencia Puissance absorbée kW	Nominal Current at 460V Corrente Nominal a 460V Courant nominal à 460V A	Power Factor Factor de Potencia Facteur de puissance cos ø	Starting Current ratio Corrente de Partida Demarrage direct IA/IN	Type	Dimension Sketch Bosquejo Dimension Plan dimensions #	Dimensions Dimensiones Cotes inches											Weight Peso Poids lbs.	
									A	B	C	D	E	F	ø G	H	K	K	M		N
26	1133	1.05	0.78	1.81	0.76	5.3	AXZ 30-4	1	15.12	7.56	5.51	6.69	8.35	8.82	0.71	4.41	10.63	0.67	2.40	8.98	90
39	1700	1.05	0.78	1.81	0.76	5.3	AXZ 45-4	1	15.12	7.56	5.51	6.69	8.35	8.82	0.71	4.41	10.63	0.67	2.40	8.98	93
52	2264	1.05	0.78	1.81	0.76	5.3	BXZ 60-4	1	15.12	7.56	5.51	6.69	8.35	8.82	0.71	4.41	10.63	0.67	2.40	8.98	101
78	3397	1.05	0.78	1.81	0.76	5.3	BXZ 90-4	1	16.38	7.56	5.51	6.69	8.35	8.82	0.71	4.41	10.63	0.67	2.40	8.98	110
108	4718	1.05	0.78	1.81	0.76	5.3	BXZ 126-4	1	19.53	7.56	5.51	6.69	8.35	8.82	0.71	4.41	10.63	0.67	2.40	8.98	130
130	5661	1.05	0.78	1.81	0.76	5.3	BXZ 151-4	1	19.53	7.56	5.51	6.69	8.35	8.82	0.71	4.41	10.63	0.67	2.40	8.98	141
130	5661	1.88	1.40	2.80	0.77	7.4	CXZ 150-4	2	18.23	9.84	3.27	9.02	9.92	10.51	0.83	5.59	12.52	0.94	2.76	11.38	201
174	7551	2.95	2.20	4.45	0.77	7.5	DXZ 200-4	2	20.00	11.22	4.13	9.76	11.69	11.50	0.83	5.94	13.62	1.10	2.76	12.80	267
260	11325	2.95	2.20	4.45	0.77	7.5	DXZ 301-4	2	23.15	11.22	4.13	9.76	11.69	11.50	0.83	5.94	13.62	1.10	2.76	12.80	271
417	18120	7.64	5.70	11.30	0.76	6.5	GXZ 480-4	2	30.98	12.60	4.65	11.02	13.46	12.99	1.02	7.05	15.43	1.18	3.15	14.25	551
521	22650	8.98	6.70	12.70	0.73	10.2	KXZ 600-4	2	37.87	14.69	5.91	12.60	16.65	15.79	1.26	7.91	17.44	1.10	4.06	16.14	833
608	26425	9.66	7.20	12.90	0.79	9.9	HXZ 700-4	3	39.69	16.54	4.84	14.17	20.00	17.80	1.02	9.37	19.57	1.38	4.53	18.35	1120

6 pole vibrator motors (1,175 rpm) | Motores de vibración de 6 polos (1,175 rpm) | moteurs vibrants 6 pôle (1,175 rpm)

in-lb	Pounds	HP	kW	A	cos ø	IA/IN	Type	#	A	B	C	D	E	F	ø G	H	K	K	M	N	lbs.
39	765	0.67	0.50	1.52	0.74	2.9	AXZ 45-6	1	15.12	7.56	5.51	6.69	8.35	8.82	0.71	4.41	10.63	0.67	2.40	8.98	93
52	1021	0.67	0.50	1.52	0.74	2.9	BXZ 60-6	1	15.12	7.56	5.51	6.69	8.35	8.82	0.71	4.41	10.63	0.67	2.40	8.98	101
78	1532	0.67	0.50	1.52	0.74	2.9	BXZ 90-6	1	16.38	7.56	5.51	6.69	8.35	8.82	0.71	4.41	10.63	0.67	2.40	8.98	110
108	2127	0.67	0.50	1.52	0.74	2.9	BXZ 125-6	1	19.53	7.56	5.51	6.69	8.35	8.82	0.71	4.41	10.63	0.67	2.40	8.98	128
130	2553	0.67	0.50	1.52	0.74	2.9	BXZ 150-6	1	19.53	7.56	5.51	6.69	8.35	8.82	0.71	4.41	10.63	0.67	2.40	8.98	132
174	3404	0.67	0.50	1.52	0.74	2.9	BXZ 201-6	1	22.44	7.56	5.51	6.69	8.35	8.82	0.71	4.41	10.63	0.67	2.40	8.98	152
174	3404	1.74	1.30	3.30	0.74	4.5	CXZ 200-6	2	18.23	9.84	3.27	9.02	9.92	10.51	0.83	5.59	12.52	0.94	2.76	11.38	207
217	4255	1.74	1.30	3.30	0.74	4.5	CXZ 250-6	2	20.20	9.84	3.27	9.02	9.92	10.51	0.83	5.59	12.52	0.94	2.76	11.38	220
260	5106	1.74	1.30	3.30	0.74	4.5	CXZ 300-6	2	20.20	9.84	3.27	9.02	9.92	10.51	0.83	5.59	12.52	0.94	2.76	11.38	234
260	5106	2.82	2.10	4.65	0.74	4.9	DXZ 300-6	2	20.00	11.22	4.13	9.76	11.69	11.50	0.83	5.94	13.62	1.10	2.76	12.80	284
434	8510	2.82	2.10	4.65	0.74	4.9	DXZ 501-6	2	24.88	11.22	4.13	9.76	11.69	11.50	0.83	5.94	13.62	1.10	2.76	12.80	335
521	10212	2.82	2.10	4.65	0.74	4.9	DXZ 600-6	2	24.88	11.22	4.13	9.76	11.69	11.50	0.83	5.94	13.62	1.10	2.76	12.80	362
608	11914	5.36	4.00	8.62	0.84	7.5	FXZ 700-6	2	27.52	12.60	4.65	11.02	13.46	12.99	1.02	7.05	15.43	1.18	3.15	14.25	558
694	13616	5.36	4.00	8.62	0.84	7.5	FXZ 800-6	2	30.98	12.60	4.65	11.02	13.46	12.99	1.02	7.05	15.43	1.18	3.15	14.25	580
868	17018	5.36	4.00	8.62	0.84	7.5	GXZ 1000-6	2	30.98	12.60	4.65	11.02	13.46	12.99	1.02	7.05	15.43	1.18	3.15	14.25	637
1302	25527	10.06	7.50	14.87	0.68	7.6	KXZ 1500-6	2	37.87	14.69	5.91	12.60	16.65	15.79	1.26	7.91	17.44	1.10	4.06	16.14	979
1736	34037	10.73	8.00	19.13	0.70	9.5	HXZ 2000-6	3	39.69	16.54	4.84	14.17	20.00	17.80	1.02	9.37	19.57	1.38	4.53	18.35	1257

On request Vimar motors type B and C are available with Italvibras/OLI foot pattern. - Bajo pedido, Vimar tipo de motores B y C están disponibles con el modelo del pie Italvibras/OLI. - Sur demande, les moteurs Vimar types B et C sont disponibles avec les dimensions en pied d'Italvibras/Oli.

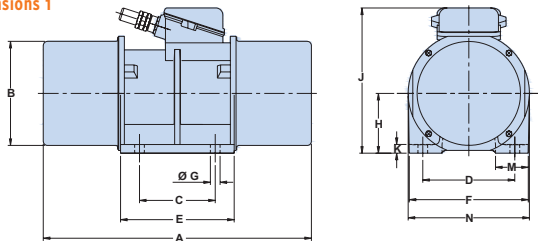
8 pole vibrator motors (855 rpm) | Motores de vibración de 8 polos (855 rpm) | moteurs vibrants 8 pôle (855 rpm)

Working Moment Torque Couple in-lb	Centrifugal Force Fuerza Centrífuga Force centrifuge Pounds	Horse Power Caballo de Fuerza Cheval-vapeur HP	Power Consumption Potencia Puissance absorbée kW	Nominal Current at 460V Corriente Nominal a 460V Courant nominal à 460V A	Power Factor Factor de Potencia Facteur de puissance cos ϕ	Starting Current ratio Corriente de Partida Demarrage direct IA/IN	Type	Dimension Sketch Bosquejo Dimension Plan dimensions #	Dimensions Dimensiones Cotes inches											Weight Peso Poids lbs.	
									A	B	C	D	E	F	ϕ G	H	K	K	M		N
52	540	0.60	0.45	1.65	0.59	3.0	BXZ 60-8	1	15.12	7.56	5.51	6.69	8.35	8.82	0.71	4.41	10.63	0.67	2.40	8.98	101
78	811	0.60	0.45	1.65	0.59	3.0	BXZ 90-8	1	16.38	7.56	5.51	6.69	8.35	8.82	0.71	4.41	10.63	0.67	2.40	8.98	110
108	1127	0.60	0.45	1.65	0.59	3.0	BXZ 125-8	1	19.53	7.56	5.51	6.69	8.35	8.82	0.71	4.41	10.63	0.67	2.40	8.98	130
130	1351	0.60	0.45	1.65	0.59	3.0	BXZ 150-8	1	19.53	7.56	5.51	6.69	8.35	8.82	0.71	4.41	10.63	0.67	2.40	8.98	132
174	1801	0.60	0.45	1.65	0.59	3.0	BXZ 200-8	1	22.44	7.56	5.51	6.69	8.35	8.82	0.71	4.41	10.63	0.67	2.40	8.98	152
217	1801	1.48	1.10	3.2	0.64	3.8	CXZ 250-8	2	20.20	9.84	3.27	9.02	9.92	10.51	0.83	5.59	12.52	0.94	2.76	11.38	236
260	2703	1.48	1.10	3.2	0.64	3.8	CXZ 300-8	2	20.20	9.84	3.27	9.02	9.92	10.51	0.83	5.59	12.52	0.94	2.76	11.38	240
434	4506	2.41	1.80	4.45	0.72	4.2	DXZ 500-8	2	23.15	11.22	4.13	9.76	11.69	11.50	0.83	5.94	13.62	1.10	2.76	12.80	342
521	5406	2.41	1.80	4.45	0.72	4.2	DXZ 600-8	2	24.88	11.22	4.13	9.76	11.69	11.50	0.83	5.94	13.62	1.10	2.76	12.80	373
694	7208	4.02	3.00	7.73	0.66	6.0	FXZ 800-8	2	30.98	12.60	4.65	11.02	13.46	12.99	1.02	7.05	15.43	1.18	3.15	14.25	580
868	9010	4.02	3.00	7.73	0.66	6.0	FXZ 1000-8	2	30.98	12.60	4.65	11.02	13.46	12.99	1.02	7.05	15.43	1.18	3.15	14.25	615
1128	11715	4.02	3.00	7.73	0.66	6.0	GXZ 1300-8	2	34.02	12.60	4.65	11.02	13.46	12.99	1.02	7.05	15.43	1.18	3.15	14.25	675
1302	13517	4.02	3.00	7.73	0.66	6.0	GXZ 1500-8	2	36.54	12.60	4.65	11.02	13.46	12.99	1.02	7.05	15.43	1.18	3.15	14.25	763
1736	18023	6.03	4.50	11.30	0.7	6.1	KXZ 2000-8	2	37.87	14.69	5.91	12.60	16.65	15.79	1.26	7.91	17.44	1.10	4.06	16.14	1063
1736	18023	9.39	7.00	18.93	0.56	7.3	HXZ 2000-8	3	39.69	16.54	4.84	14.17	20.00	17.80	1.02	9.37	19.57	1.38	4.53	18.35	1279
2170	22527	9.39	7.00	18.93	0.56	7.3	HXZ 2500-8	3	42.05	16.54	4.84	14.17	20.00	17.80	1.02	9.37	19.57	1.38	4.53	18.35	1323
2604	27033	9.39	7.00	18.93	0.56	7.3	HXZ 3000-8	3	43.62	16.54	4.84	14.17	20.00	17.80	1.02	9.37	19.57	1.38	4.53	18.35	1367

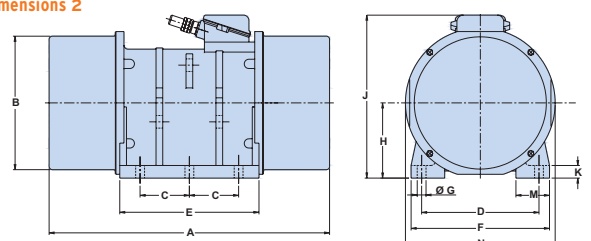
*Working Moment = 2 x Static Moment; Momento de trabajo = 2 x momento estático; couple de travail = 2 x moment statique

** 1 N = 0.224809 lbs; 1 Pound = 4.44822 N

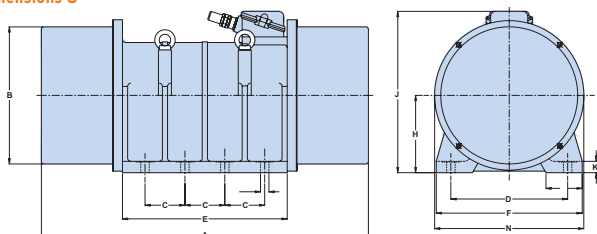
Dimension sketch 1
Bosquejo Dimensión 1
Plan dimensions 1



Dimension sketch 2
Bosquejo Dimensión 2
Plan dimensions 2



Dimension sketch 3
Bosquejo Dimensión 3
Plan dimensions 3



Standard design

- 265/460 V, 60 Hz
- Protection class IP 66 according to DIN 40050
- Insulation class F
- Tropicalized
- Paint finish: 2K-PU RAL
- Stainless steel end covers fitted to all motors up to type FXZ 700 (remaining types on request).
- Lubrication: FAG Arcanol VIB3

Following options on request

- Alternative voltages

Installation, operating and re-lubrication

Please use our Installation, Operation and Maintenance Manual.

Diseño estándar

- 265/460 V, 60 Hz
- Clase de protección IP 66 según DIN 40050
- Aislamiento clase F
- Tropicalizado
- Acabado de Pintura: 2K-PU RAL
- Fin de acero inoxidable cubiertas disponible para todo los motores Hasta el tipo FXZ 700 (restantes tipos bajo demanda).
- Lubricación: FAG Arcanol VIB3

Siguientes opciones bajo pedido

- Voltajes Alternas

Instalación, Operación y Re-Lubricación

Utilice nuestro libro de instalación, servicio y mantenimiento.

Design standard

- 265/460 V, 60 Hz
- Protection classe IP 66 selon DIN 40050
- Isolation classe F
- Apte aux tropiques
- Peinture : 2K-PU RAL
- Capots inox pour tous les moteurs jusqu'au type FXZ 700 (autres types sur demande).
- Lubrification : FAG Arcanol VIB3

Options suivantes sur demande

- Voltages alternatifs

Installation, opération et ré-graissage

Veillez vous référer à notre Guide de Montage, Opération et Maintenance.

Vimarc Inc.

10757 Cutten Road #5
Houston, TX 77066 · USA
Phone: +1 (281) 440-0028
Fax: +1 (281) 537-2371
info@vimarcusa.com
www.vimarcusa.com

Vimarc® Motor assembled by Vimarc Inc., USA