

# MOTOR SPECIFICATION

PAGE

1 of 2

**M O D E L** : ISG-3225ADF

**R A T I O** : 1 : 1419

## ELECTRICAL

1. TYPE : SHADED POLE INDUCTION GEARED MOTOR

2. RATED VOLTAGE : AC 230V 50/60Hz

3. POLES : 2P

4. NO LOAD CHARACTERISTICS

At Geared Motor Ass'y

4-1. CURRENT : 0.12 / 0.13 A ± 15%

4-2. INPUT POWER : 14.5 / 15.5 W ± 15%

4-3. SPEED : 2.0 / 2.5 r/min ± 10%

4-4. STARTING VOLTAGE : 161 V Max.

5. TORQUE CHARACTERISTICS

At Geared Motor Ass'y

5-1. BREAKDOWN TORQUE : 13.5 / 12.9 N·m Min.

5-2. STARTING TORQUE : 11.0 / 8.8 N·m Min.

6. DIELECTRIC STRENGTH

Motor shall withstand a potential of 1500V RMS for 1 minute(1800V RMS for 1 second) duration between coil leads and frame. (Cutoff Current 3mA)

7. INSULATION RESISTANCE

100MΩ minimum at DC 500V MEGA TESTER between winding and frame.



2014.03.24	J.K KIM	CHANGED : Output Shaft		
2011.05.03	J.K KIM	CHANGED : BRACKET ASS' Y		
DATE	SIGNATURE	CHANGE CONTENTS		
DESIGNED	CHECKED	APPROVED	MODEL NAME	<b>ISG-3225ADF(Rev.02)</b> ----- <b>SHADED POLE GEARED MOTOR</b>
J.K KIM	C.Y LEE	B.Y JEONG		
<b>(주) 에스피지</b>			RE- DATE	2014.03.24
			DATE	2006.10.22
<b>SPG Co., Ltd.</b>			DRAWING NO	
			<b>A-146-0673-12</b>	

# MOTOR SPECIFICATION

PAGE

2 of 2

## 8. TEMPERATURE RISE

8-1. WINDING : Temperature rise of the winding and the case are 75K(°C) or less respectively measured by the resistance method after rated operation under normal ambient temperature and humidity.

8-2. PROTECTED TYPE : Impedance Protected

9. CONNECTION : See drawing No. A-146-0673-12

10. LEADS : .250 Male Tab Terminal

11. TEMPERATURE RANGE : -10°C ~ +40°C (Nonfreezing)

12. HUMIDITY RANGE : RH 85% Max. (Non-condensing)

13. INSULATION CLASS : E class

14. DUTY : S1(Continuous)

## MECHANICAL

1. SHAFT RUN OUT : Measured - mm from shaft end - mm Max.

2. OUTPUT SHAFT ENDPLAY : 0.8mm Max.

3. BEARING : Oil Impregnated Sintered Bearings

4. LUBRICATION : High Temperature Grease & Oil

5. APPEARANCE : To be free from any defects that will adversely affect appearance.


6. MARKING : See drawing No. A-146-0673-12

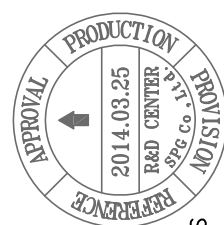
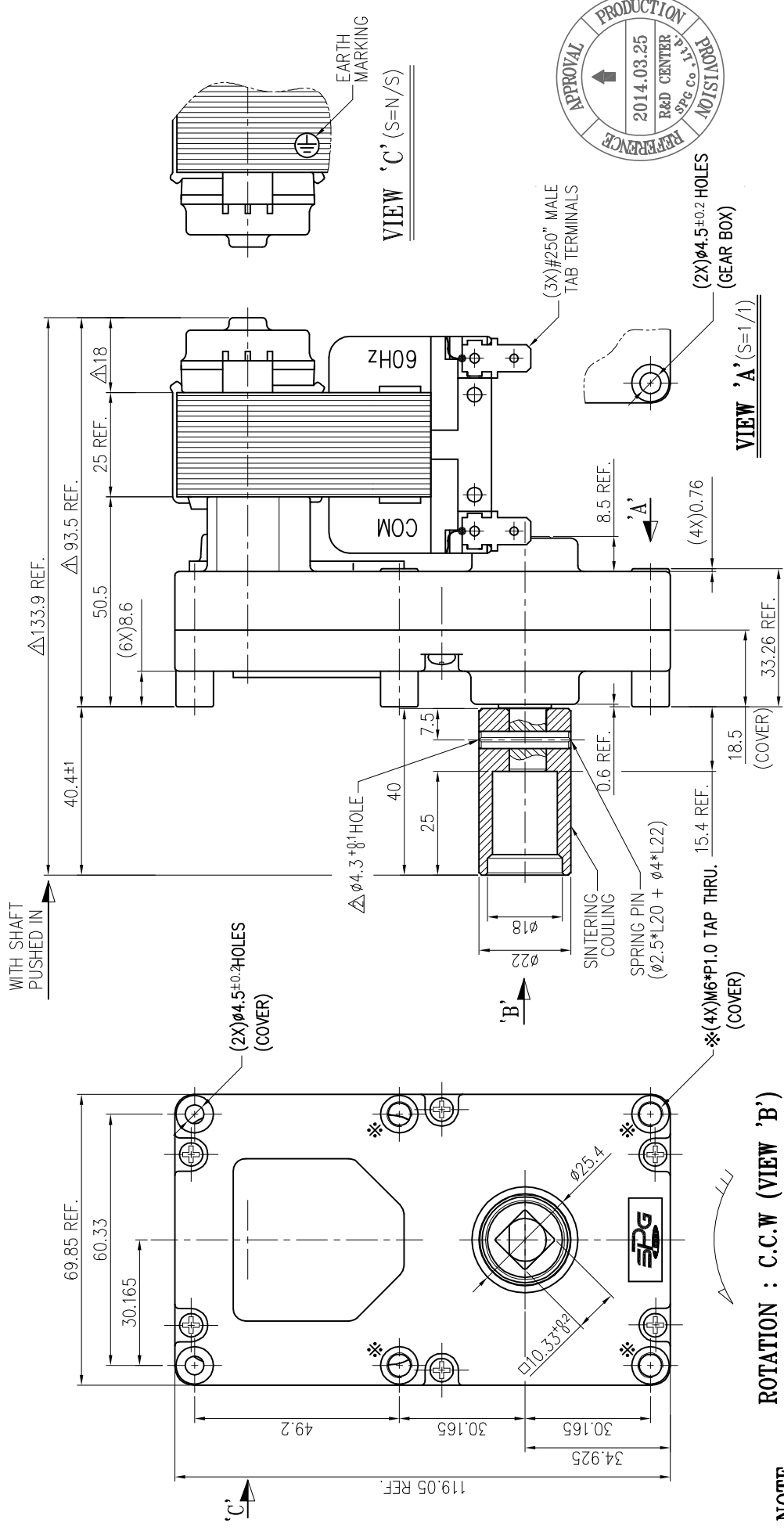
7. DIMENSION : See drawing No. A-146-0673-12

8. SHAFT POSITION : Horizontal

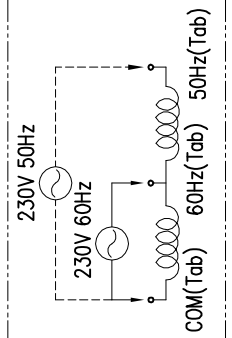
9. MAXIMUM PERMISSIBLE TORQUE : 33.8N · m



 <b>SPG Co., Ltd.</b>	RE-DATE	2014.03.24	DRAWING NO.  <b>A-146-0673-12</b>
	DATE	2006.10.22	



2014.03.24	B.H.LEE	CHANGED : OUTPUT SHAFT	CUSTOMER
2011.04.29	D.H.KIM	CHANGED : BRACKET ASSY	CUSTOMER
DATE	서명	변경내용	변경이유
재질	표면처리	척도	공차
재료	표면처리	SCALE	TOLERANCE
DESIGN CHECK	DESIGN CHECK	1/1	±1.0
B.H.LEE	J.H. HONG	C.Y. LEE	B.Y. JEONG
도명		도명	
GEARED MOTOR ASS'Y		ISG-3225ADF(Rev.02)	
작성일		도번	A-146-0673-12A
DATE		DWG NO.	
2014.03.24			



**CONNECTION DIAGRAM**

**NOTE**

1. TYPE : SHADED POLE INDUCTION GEARED MOTOR
2. OUTPUT SHAFT POSITION : HORIZONTAL
3. ROTATION : VIEWED FROM OUTPUT SHAFT END C.C.W.(VIEW 'B')
4. END PLAY : 1) ROTOR : 0.8mm Max.  
2) OUTPUT SHAFT : 0.8mm Max.
5. GEAR BOX LUBRICANT : HIGH TEMPERATURE GREASE
6. 'A' GEAR MATERIAL : STEEL CUT(HELICAL GEAR)
7. FOR MORE SPECIFICATIONS SEE "MOTOR SPECIFICATION SHEET"
8. CUSTOMER IS RESPONSIBLE FOR DETERMINING THAT MOTOR PERFORMANCE IS SUITABLE IN THE APPLICATION