



SOUTHERN CALIFORNIA HYDRAULIC ENGINEERING CORPORATION

DESIGNERS AND MANUFACTURERS OF HYDRAULIC & PNEUMATIC EQUIPMENT

1130 COLUMBIA STREET BREA, CALIFORNIA 92821

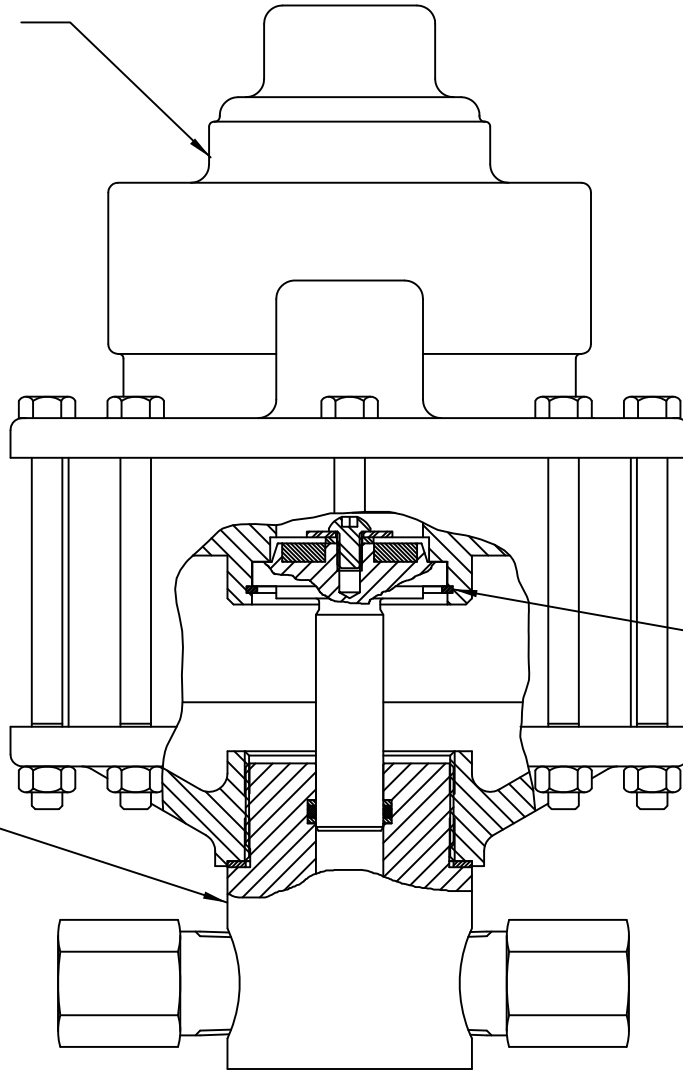
REV. B, 8/22/14

NON-LUBE PUMP ASSEMBLY 10-5000W015 THRU W060

LUBE PUMP ASSEMBLY 10-5000W015L THRU W060L

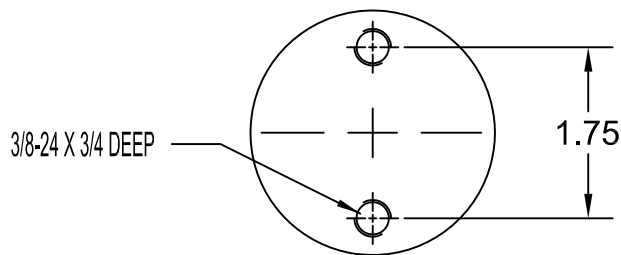
(NOTE: P/N 10-5000W015 THRU W060 WAS D5000B25 THRU B105)

AIR MOTOR ASSEMBLY
11-5113ADL0 FOR NON-LUBE PUMP
11-5113A000 FOR LUBE PUMP



RETAINING RING
12-R200S000 (REF)

HYDRAULIC ASSEMBLY
11-5026W015
11-5026W018
11-5026W020
11-5026W030
11-5026W040
11-5026W045
11-5026W060



MOUNTING DIMENSIONS



SOUTHERN CALIFORNIA HYDRAULIC ENGINEERING CORPORATION

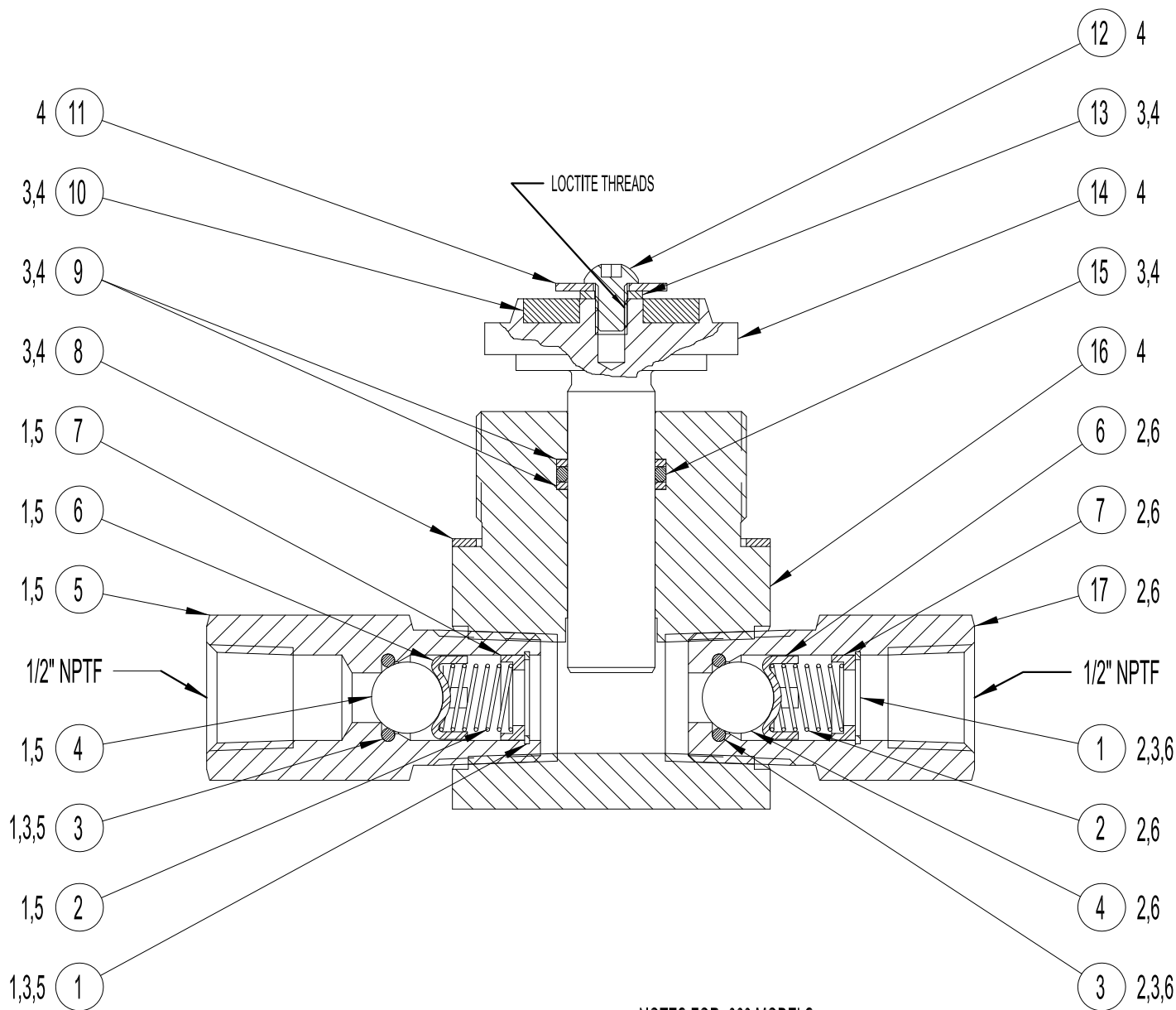
DESIGNERS AND MANUFACTURERS OF HYDRAULIC & PNEUMATIC EQUIPMENT

1130 COLUMBIA STREET BREA, CALIFORNIA 92821

WWW.SCHYDRAULIC.COM

REV. C, 11/10/14

HYDRAULIC ASSEMBLY 11-5026W015 THRU W060



NOTES FOR -060 MODELS:

4. INCLUDED IN 11-5027WXXX* PISTON & CYLINDER ASSEMBLY.

3. INCLUDED IN 11-5148NXXX* HYDRAULIC REPAIR KIT.

2. INCLUDED IN 11-5023S000 OUTLET CHECK VALVE ASSY. FOR -015 THRU -045 MODEL.

1. INCLUDED IN 11-5024S000 INLET CHECK VALVE ASSY. FOR -015 THRU -045 MODEL.

5. INCLUDED IN 11-5024S060 INLET CHECK VALVE ASSY. FOR -060 MODEL.

6. INCLUDED IN 11-5023S060 OUTLET CHECK VALVE ASSY. FOR -060 MODEL.

* XXX: REPRESENTS PUMP ASSEMBLY RATIO NUMBER

NOTES:



SOUTHERN CALIFORNIA HYDRAULIC ENGINEERING CORPORATION

DESIGNERS AND MANUFACTURERS OF HYDRAULIC & PNEUMATIC EQUIPMENT

1130 COLUMBIA STREET BREA, CALIFORNIA 92821

WWW.SCHYDRAULIC.COM

BILL OF MATERIALS: 11-5026W015_W060

DRAWING NUMBER & DESCRIPTION: 11-5026W015 THRU W060 HYDRAULIC ASSEMBLY

REVISION: C, 11/10/14

ITEM	QTY	PART NO.	DESCRIPTION	W015 (25:1)	W018 (30:1)	W020 (35:1)	W030 (55:1)	W040 (70:1)	W045 (85:1)	W060 (105:1)	REFERENCE NO.
1	2	P10202-068	RETAINING RING	X	X	X	X	X	X	X	12-R068S000
2	2	11-5013S000	SPRING	X	X	X	X	X	X		10-450-13
2	2	D10862	SPRING							X	
3	2	P11003-112	O-RING, BUNA	X	X	X	X	X	X	X	
4	2	12-0440S562	CHECK BALL	X	X	X	X	X	X	X	
5	1	11-5019S000	SEAT-INLET	X	X	X	X	X	X	X	10-450-19
6	2	11-5034S002	BALL GUIDE	X	X	X	X	X	X	X	10-450-34
7	2	11-5017S000	SPRING GUIDE	X	X	X	X	X	X	X	10-450-17
8	1	11-5028N000	GASKET	X	X	X	X	X	X	X	10-450-28
9	2	P11227-214	BACK-UP	X							
9	2	P11227-213	BACK-UP		X						
9	2	P11227-212	BACK-UP			X					
9	2	P11227-115	BACK-UP				X				
9	2	P11227-114	BACK-UP					X			
9	2	P11227-113	BACK-UP						X		
9	2	P11227-112	BACK-UP							X	
10	1	11-5051P000	PISTON BUMPER	X	X	X	X	X	X	X	10-450-51
11	1	12-25N87WF1Z	FENDER WASHER	X	X	X	X	X	X	X	
12	1	12-25F37SBC45Z	BUTTON HD.CAP SCREW	X	X	X	X	X	X	X	
13	1	P10212-025	HEL. SPRING LOCK WASHER	X	X	X	X	X	X	X	
14	1	11-5010S015	HYDRAULIC PISTON	X							10-450-10-1.5
14	1	11-5010S018	HYDRAULIC PISTON		X						10-450-10-1.75
14	1	11-5010S020	HYDRAULIC PISTON			X					10-450-10-2
14	1	11-5010S030	HYDRAULIC PISTON				X				10-450-10-3
14	1	11-5010S040	HYDRAULIC PISTON					X			10-450-10-4
14	1	11-5010S045	HYDRAULIC PISTON						X		10-450-10-4.5
14	1	11-5010S060	HYDRAULIC PISTON							X	10-450-10-6
15	1	P11000-214	O-RING, BUNA	X							12-6227E019
15	1	P11000-213	O-RING, BUNA		X						12-6227E018
15	1	P11000-212	O-RING, BUNA			X					12-6227E017
15	1	P11000-115	O-RING, BUNA				X				12-6227E013
15	1	P11000-114	O-RING, BUNA					X			12-6227E012
15	1	P11000-113	O-RING, BUNA						X		12-6227E012
15	1	P11000-112	O-RING, BUNA							X	12-6227E010
16	1	11-5011B015	HYDRAULIC CYLINDER	X							10-450-11-1.5
16	1	11-5011B018	HYDRAULIC CYLINDER		X						10-450-11-1.75
16	1	11-5011B020	HYDRAULIC CYLINDER			X					10-450-11-2
16	1	11-5011B030	HYDRAULIC CYLINDER				X				10-450-11-3
16	1	11-5011B040	HYDRAULIC CYLINDER					X			10-450-11-4
16	1	11-5011B045	HYDRAULIC CYLINDER						X		10-450-11-4.5
16	1	11-5011B060	HYDRAULIC CYLINDER							X	10-450-11-6
17	1	11-5020S000	SEAT- OUTLET	X	X	X	X	X	X	X	10-450-11-20

WHERE USED: 10-5000W015_W060 , D5000B25_B105
10-5000W15L_W060L, D5000B25_B105-SPO