

DYNISCO MODEL TPT463E

The Classic Flexible Stem Melt Pressure Transducer with Thermocouple

Description

Model TPT463E combines a removable Type J thermocouple with the classic PT462E pressure sensor to allow the user to make pressure and temperature measurements at a single point. It has a flexible stem for ease of mounting.

Features

- Better than $\pm 0.5\%$ accuracy
- 3.33 mV/V FSO
- Internal 80% shunt calibration
- All stainless steel wetted parts
- 0 - 500 to 0 - 30,000 psi
- Good stability and repeatability
- Flexible stem
- Integral thermocouple

- Removable Type J thermocouple
- RTD and optional thermocouples available

Benefits

- Reliable pressure measurement
- Standard low level output
- Easy set - up
- Corrosion resistant
- Choice of pressure ranges
- Reliable measurement
- Easy to install, ideal for high local temperature
- Simultaneously measure pressure/temperature in one location

- On - line repair/replacement
- Temperature measurement alternatives



Specifications

Performance Characteristics

Ranges (psi): 0 - 500, 0 - 750, 0 - 1,000, 0 - 1,500, 0 - 3,000, 0 - 5,000, 0 - 7,500, 0 - 10,000, 0 - 15,000, 0 - 20,000, 0 - 30,000

Accuracy: $\pm 0.5\%$ FSO

Repeatability: $\pm 0.2\%$ FSO

Mounting torque: 500 inch - lbs. maximum

Maximum pressure: 2 x full range or 35,000 psi (whichever is less)

Material in contact with pressure media: 15 - 5 PH stainless steel, DyMax™ coated

Weight: 2.5 lbs.

Thermocouple: Type J

NEW
EXTENDED
LIFE
COATING

Electrical Characteristics

Configuration: Four active arm bonded Wheatstone bridge strain gage

Bridge resistance: *Input:* 345 ohms minimum; *Output:* 350 ohms $\pm 10\%$

Full scale output: 3.33 mV/V $\pm 2\%$

Zero balance: $\pm 10\%$ full scale

Excitation: 10 Vdc recommended, 12 Vdc maximum

Internal shunt calibration (R Cal): 80% FSO $\pm 1.0\%$

Insulation resistance: 1,000 megohms at 50 Vdc

Temperature Characteristics

Transducer diaphragm:

Maximum diaphragm temperature: 750°F (400°C)

Zero shift due to temperature change: 25 psi/100°F maximum (45 psi/100°C)

Electronics housing:

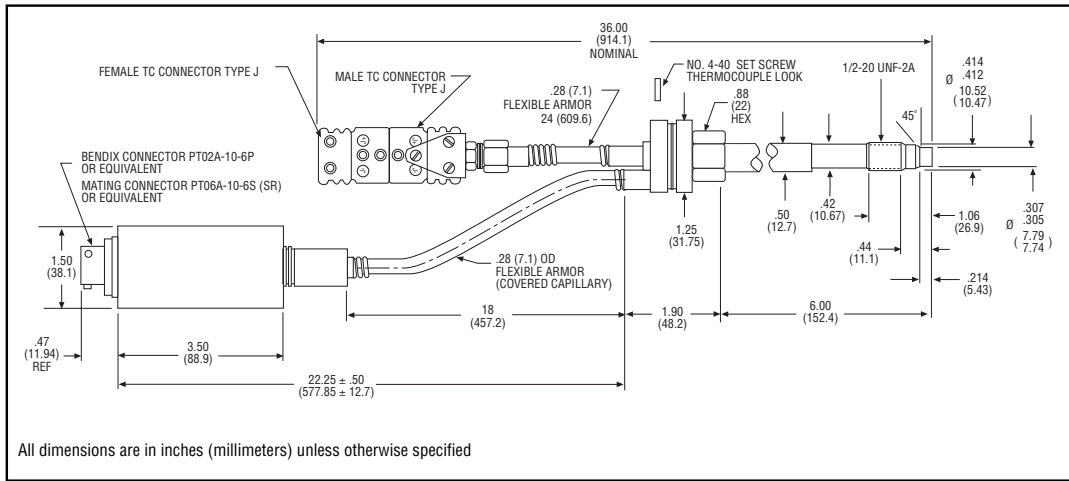
Maximum temperature: 250°F (121°C)

Zero shift due to temperature change: $\pm 0.05\%$ full scale/°F maximum ($\pm 0.10\%$ full scale/°C)

Sensitivity shift due to temperature change: $\pm 0.02\%$ full scale/°F maximum ($\pm 0.04\%$ full scale/°C)

DYNISCO MODEL TPT463E

The Classic Flexible Stem Melt Pressure Transducer with Thermocouple



Ordering Guide

Model	Pressure Range (psi)		Rigid Stem		Flexible Stem	
	Code	Range	Code	Length	Code	Length
TPT463E	5C	0 - 500				
	7.5C	0 - 750				
	1M	0 - 1,000				
	1.5M	0 - 1,500	3	3"		
	3M	0 - 3,000	4	4"		
	5M	0 - 5,000	6	6"	18	18"
	7.5M	0 - 7,500	9	9"		
	10M	0 - 10,000	12	12"		
	15M	0 - 15,000				
	20M	0 - 20,000				
30M	0 - 30,000					

Ordering Example: TPT463E - 10M - 6/18

- Mating connector P/N711600 or 6 - pin cable assembly sold separately.
- Transducer Options: Please consult factory.

Delivery

■ Express delivery. Call for delivery information on other configurations.