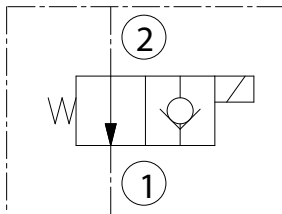


SYMBOL



CAVITY

See page 8.2.01

TO ORDER

EV08-2A

Voltage	Seals
0 - Without coil	N - Buna N
12 - 12 V DC	V - Viton A
24 - 24 V DC	
11 - 110V RAC	
22 - 220V RAC	

Terminations DIN 43650 See page 8.1.01

DESCRIPTION

A solenoid-operated, 2-way, piloted, poppet-type, normally open, screw-in, hydraulic cartridge valve designed for low leakage in load-holding applications.

OPERATION

When de-energized, the EV08-2A allows flow from 2 to 1. Flow from 1 to 2 is severely restricted in this mode.

When energized, the valve's poppet closes on its seat, blocking flow from 2 to 1. In this mode the cartridge will allow 1 to 2 flow after overcoming the solenoid force.

RATINGS

Operating Pressure: 250 bar

Flow: See Performance Chart

Internal Leakage: 0.25 cc/minute max. at 250 bar

Temperature: -20 to 90°C with standard Buna N seals

Coil Duty Rating: Continuous from 85 % to 115 % of nominal voltage

Minimum Pull-in Voltage: 85 % of nominal at 250 bar

Filtration: Recommend 25 µm nominal or better

Fluids: Mineral-based or synthetics with lubricating properties at viscosities of 7.4 to 420 cSt

Installation: No restrictions

Cavity: CC08-2; See page 8.2.01

PERFORMANCE (Cartridge Only)

From 2 to 1
32cSt oil at 40°C

