

## Palm Grips • DIN 6335 cast iron

### 24620.0440



#### Product Description

These palm grips are manufactured according to DIN 6335. Sandblasted or tumbled.

#### Material

##### Handle

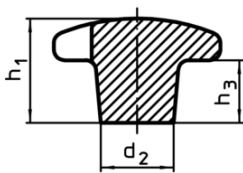
- Grey cast iron GG 20, bright

#### More information

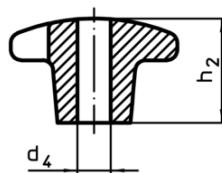
##### Notes

Grips with different bores or surface treatment can be obtained on request.

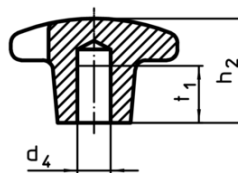
#### Drawing



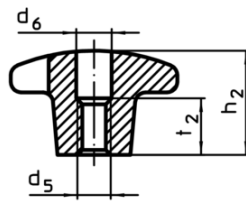
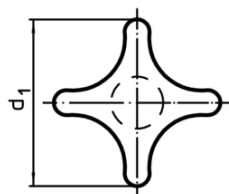
picture 1



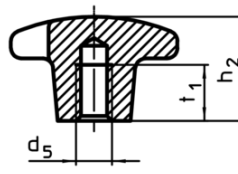
picture 2



picture 3



picture 4



picture 5

#### Order information

Dimensions					[g]	Art. No.
d <sub>1</sub>	d <sub>2</sub>	d <sub>5</sub> [mm]	h <sub>2</sub>	t <sub>1</sub>		
with threaded blind hole, form E – picture 5						
40	14	M8	25	15	56	24620.0440

#### Compliance

##### RoHS compliant

Compliant according to Directive 2011/65/EU and Directive 2015/863

##### Does not contain SVHC substances

No SVHC substances with more than 0.1% w/w contained - SVHC list [REACH] as of 10.06.2022

##### Does not contain Proposition 65 substances

No Proposition 65 substances included

<https://www.P65Warnings.ca.gov/>

##### Free from Conflict Minerals

This product does not contain any substances designated as "conflict minerals" such as tantalum, tin, gold or tungsten from the Democratic Republic of Congo or adjacent countries.